

uvex



Prescription Safety Eyewear

protecting people

Contents

The virtual companion for prescription safety spectacles

uvex i3 add safety spectacles with invisible integrated dioptre correction	Page 3
uvex online ordering system	Page 4-5
Frequently Asked Questions - FAQ's	Page 6
uvex RX cd collection	Page 8-9
uvex cb collection	Page 10
uvex basic collection plastic prescription safety frames	Page 11
uvex basic collection metal prescription safety frames	Page 11-14
uvex RX sp	Page 15
uvex RX sp sport collection prescription safety frames	Page 16-17
uvex prescription safety goggles	Page 18
Lens types, materials and tints	Page 19
Certification and labelling	Page 20
Optifog	Page 21
uvex prescription office/VDU spectacles	Page 22-25
uvex prescription self contained breathing apparatus (SCBA) eyewear	Page 26
Multiple form request	Page 27



Why uvex?

- 30 years of UK industry service excellence and short lead-times
- Product is manufactured in the UK
- Committed to providing quality products and services
- Customer friendly process
- Internal and external prescription experts - our sales team have a combined 270 years' experience
- Supported by Essilor, one of the world's leading lens manufacturers

uvex i-3 add

Perfect vision in every situation

Optimum protective eyewear means improved, safe vision.

uvex i-3 add safety spectacles have invisible integrated dioptré correction for near vision. Strain on the eyes is effectively reduced (e.g. when reading) and the patented lens technology ensures an instant high level of compatibility for wearers. At the same time, the uvex i-3 add spectacles provide secure protection and optimum comfort.



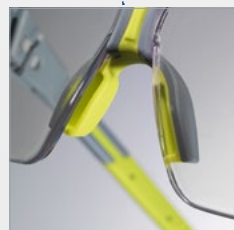
Variable side arm inclination

The 5-position side arm inclination allows individual adjustment and optimum coverage of the eyes.



Addition

Two models are available for correction of near vision. (+1.0 dpt. and +2.0 dpt.)



Flexible nose loops

The extremely soft adjustable Softflex nose loops ensure a secure fit and can be adapted to sit comfortably on the nose.

uvex supravision excellence

The uvex supravision excellence coating guarantees extreme scratch resistance on the outside and permanent anti-fogging properties on the inside.

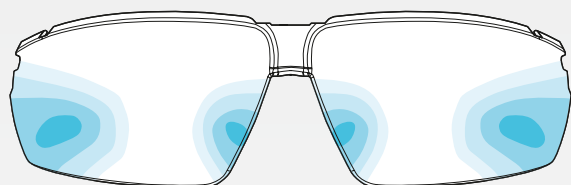
MADE IN GERMANY

Patent no.: DE 10 2012 207 384

Perfection in every detail

The patented lens technology makes it possible to integrate two progression zones for near vision on the inside of the duospherical single lens safety spectacles. The correction strength at the bottom of the lenses is +1.0 or +2.0, depending on the model. A distinctive feature and unique selling point is that the patented manufacturing technology means the front area and consequently the base curve of the lenses are not altered.

This combines extremely good coverage and fit, all the way to the edge, together with the benefits of a progressive lens on the inside area. A further benefit is that the progressive zone is not visible and that these spectacles comply with all standards of EN norms that are relevant to safety.



optical lens designed by
optiswiss
original since 1937

Progression zones

This diagram of the lenses shows the large zone that does not feature any optical correction. The transparent, integrated optical correction starts in the middle region and the strength increases gradually towards the lower edge of the lens. The correction strength of the spectacles is +1.0 or +2.0, depending on the model. The free-form lens is manufactured in accordance with standard parameters and designed for a distance of approximately 64 mm between the eyes. These safety spectacles do not permanently replace prescription safety spectacles.

uvex i-3 add

	uvex i-3 add 1.0	uvex i-3 add 2.0
Art. no.	6108.210	6108.211
Frame	anthracite, lime W 166 FT CE	anthracite, lime W 166 FT CE
Lens	PC clear UV 400 2C-1.2 W 1 FTKN CE uvex supravision excellence	PC clear UV 400 2C-1.2 W 1 FTKN CE uvex supravision excellence
Strength	1.0 dpt.	2.0 dpt.



Including soft spectacles case with microfibre cloth

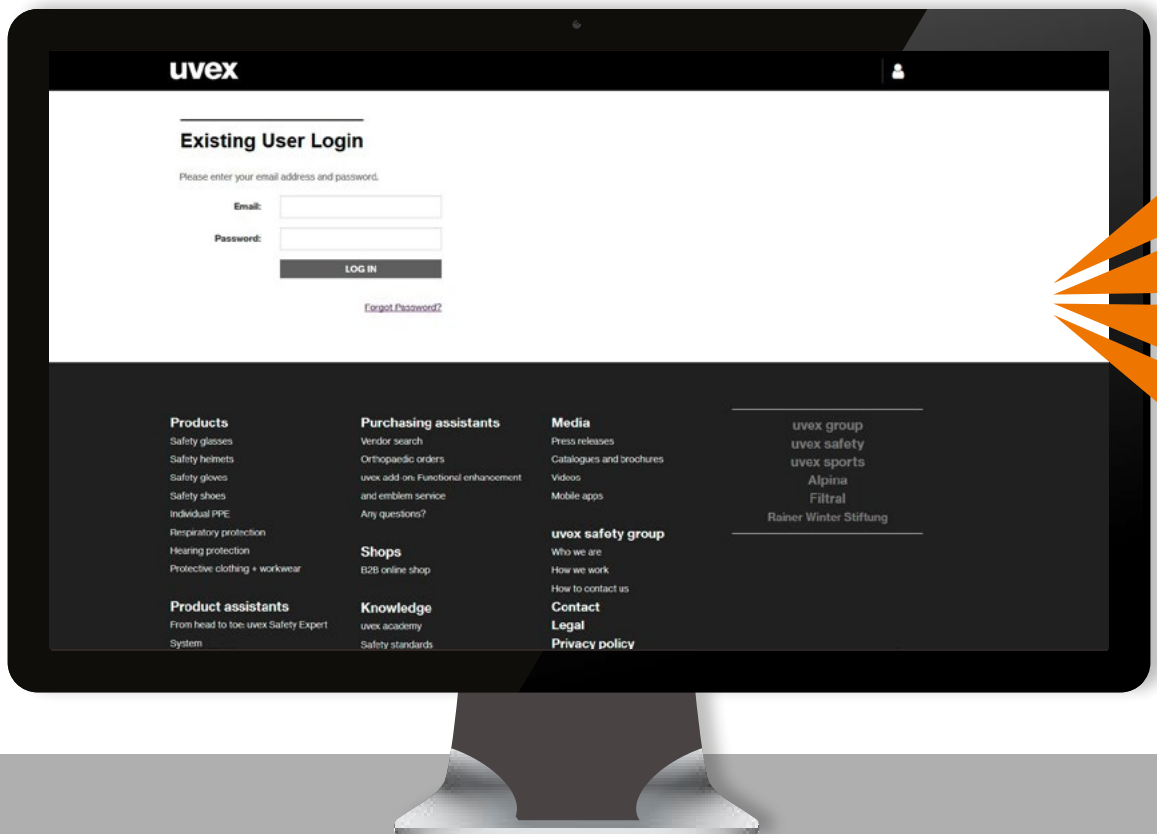
Online Ordering Process

Easier, faster, seamless

Prescription Online Ordering Process

uvex's online ordering system allows customers to order prescription eyewear quickly and easily. The automated system enables approved personnel (Authorising Officers) to:

- generate a form quickly: allowing you to print or email it to the employee
- create and track the status of new prescription orders as they move through the manufacturing process: from when the Authorising Officer generates the form through to the order being despatched to the optician and finally invoiced
- review historical orders and run user reports



For more information about the uvex prescription online ordering process, please visit www.uvex-safety.co.uk/prescription. To speak to a member of our prescription team call 01252 725552 or email help-prescription@uvex.co.uk.

Online Ordering Process

Easier, faster, seamless

The Optician's Portal is a great advantage to the flow and speed of the order process and will give your employee a better experience when they visit the optician.

If your employee chooses a frame or a lens type which is not on your pre-approved list for selection, the optician can advise the employee straightaway. They will then have a choice to either choose something from the pre-approved list or to continue with the order. If they choose the latter uvex will seek approval as necessary, although this is likely to delay the order until approval is granted.

Once registered your Optician will be able to:

Optician's Online Portal

1. See the approved frames for your employees
2. Review and complete all fields to ensure timely processing
3. Submit the order which will go straight into production. Delays only occur when there is a query with the order e.g. obtaining approval for non-standard items or obtaining purchase order numbers
4. Check the status of the order at any point once in production and advise the employee accordingly



Another advantage of the optician's portal is that uvex will be able to pay the optician for the dispensing and sight test fees by BACS payment, saving administration time and providing increase traceability.

Frequently Asked Questions asked by End Users

1

How do I get my spectacles?

Go to your Authorising Officer/Line Manager who will complete a pre-printed uvex form and sign it or generate online. Then take this form to your chosen optician who will carry out an eye test and order your spectacles.

2

Which optician do I go to?

Your company may have chosen a designated optician to which you must go, this may well be printed on the form under "optician name". Your authorising officer will know and inform you if this is the case. If a designated optician has not been specified then you can visit any optician of your choice. However, frames may not be available to try on.

3

How do I choose a frame?

Your company may have specified certain frames that they will allow you to wear. These will be on the form under "approved frames". If this is not the case the complete range can be seen in this brochure from which your choice can be made. If a designated optician has been chosen then sample frames will be available to try on there.

4

What happens if the frame isn't at the opticians to try on?

Your optician can call uvex to order a sample frame. When this arrives your optician will inform you that it has done so and will arrange a further appointment for you to try on the frame.

5

What if I have recently had an eye test ?

If you have your current eye prescription details you can take these to the optician along with the uvex form and the optician can fill in the form with your details and order the spectacles as normal.

6

Do I have pay for my eye test and claim it back from my company?

Provided your company pays for your eye test, uvex can arrange to pay the optician on your behalf and then invoice your company. This way no money changes hands at the optician.

Asked by Authorising Officers

1

How does my companies preferred optician access the portal?

The opticians portal is a free elective service that an optician can quickly register for. Vision Express is transitioning on to the system with all stores being live by January 2019.

2

How can my company obtain uvex forms?

Forms are generated online or uvex can provide them free of charge with relevant information preprinted to ease the process. The Authorising Officer should complete the inside back cover of this brochure, fax it back to uvex and we will do the rest. The more information your company can provide, the smoother the process will work.

3

What's the benefit of a designated optician?

uvex will provide your designated optician with the appropriate frames, allowing employees to try them on for style and fitting purposes. Frames need to be measured on the individuals face in order to achieve ocular precision. In addition, fees can be agreed providing consistent invoice levels.

4

How can my company set up a designated optician?

Often the company Safety Officer or Occupational Health Nurse will make arrangements with a local optician, alternatively a uvex representative can arrange this for you.

5

Will the optician know what to do with the uvex form?

The form is quite straightforward and has all the required information on it. Generally there are no issues. However, if there are any queries, a phone call to our prescription department on 01252 725552, should solve any problems.

6

How long will the glasses take to manufacture?

From the date of entering your details on to our computer we average between 7 and 10 working days before the spectacles are completed.

uvex

Prescription Safety Frames

Prescription safety spectacles

uvex RX cd



5514 1033 53/18



5514 1045 55/18

uvex RX cd 5514

- Close-fitting plastic frame
- Transparent side shields and integrated brow guard frame design
- Soft, adjustable nose bridge
- Easily adjustable soft-form comfort ear pieces
- Prescription strength of up to a combined maximum +/- 8.00

uvex RX cd 5514		
Art. no.	6109.225	6109.226
Ref. no.	5514 1033 53/18	5514 1045 55/18
Frame eye size	53 mm	55 mm
Bridge width	18 mm	18 mm
Colour	black, blue	black, red



5515 1347 51/17



5515 1371 53/17



5515 1342 57/17

uvex RX cd 5515

- Close-fitting plastic frame
- Side shields and integrated brow guard frame design
- Soft, adjustable nose bridge
- Easily adjustable soft-form comfort ear pieces
- Prescription strength of up to a combined maximum +/- 8.00

uvex RX cd 5515			
Art. no.	6109.227	6109.228	6109.229
Ref. no.	5515 1347 51/17	5515 1371 53/17	5515 1342 57/17
Frame eye size	51 mm	53 mm	57 mm
Bridge width	17 mm	17 mm	17 mm
Colour	anthracite, coral	anthracite, petrol	anthracite, dark red

Prescription safety spectacles

uvex RX cd



5518 1341 54/22



5518 5074 54/22

uvex RX cd 5518

- Sporty frame design: attractive and durable
- Metal-free
- Comfortable soft arms (uvex duo component technology) non-slip fit without pressure points
- Good fit thanks to anatomically shaped nose bridge
- Prescription strength of up to a combined maximum +/- 8.00

uvex RX cd 5518		
Art. no.	6109.230	6109.231
Ref. no.	5518 1341 54/22	5518 5074 54/22
Frame eye size	54 mm	54 mm
Bridge width	22 mm	22 mm
Colour	anthracite, red	dark brown, green



5505 2900 55/19
5505 2900 57/19



5505 with foam seal

uvex RX cd 5505

- Close-fitting wraparound plastic frame
- Side shields and integrated brow guard for an exceptionally close fit
- Specially shaped frames provide protection against particles from below
- Good fit with anatomically shaped nose bridge
- Individually adjustable side arm length and angle for a customised fit and adjustable soft-form comfort ear pieces
- Comes with foam seal for use when working with dust, chips or fluids. Complies with EN 166 "Protection against liquid droplets and splashes" (category "3")
- Prescription strength of up to a combined maximum +/- 8.00

uvex RX cd 5505		
Art. no.	6109.208	6109.209
Ref. no.	5505 2900 55/19	5505 2900 57/19
Frame eye size	55 mm	57 mm
Bridge width	19 mm	19 mm
Colour	transparent	transparent

Prescription safety spectacles

uvex RX cb



5580 3015 57/14

uvex RX cb 5580

- Special shaped bridge area
- Wide fitting frame
- Side shields and integrated brow guard design
- Adjustable side arms with metal inlay and soft temple tips

	uvex RX cb 5580
Art. no.	6109.232
Ref. no.	5580 3015 57/14
Frame eye size	57
Bridge width	14
Colour	blue/grey



5581 1542 58/14

uvex RX cb 5581

- Special shaped bridge area
- Wide fitting frame
- Side shields and integrated brow guard design
- Adjustable side arms with metal inlay and soft temple tips

	uvex RX cb 5581
Art. no.	6109.233
Ref. no.	5581 1542 58/14
Frame eye size	58
Bridge width	14
Colour	grey/red

Prescription safety spectacles

Basic collection plastic and metal frames



5502 1725 56/15



5506 1725 56/18

uvex RX 5502

- Close-fitting plastic frames
- Side shields and integrated brow guard frame design
- Specially shaped frames provide protection against particles from below
- Good fit with anatomically shaped nose bridge
- Individually adjustable side arms with four different lengths and adjustable soft-form comfort ear pieces
- Prescription strength of up to a combined maximum +/- 8.00

uvex RX 5502	
Art. no.	6108.215
Ref. no.	5502 1725 56/15
Frame eye size	56 mm
Bridge width	15 mm
Colour	grey

uvex RX 5506

- Comfortable plastic frame
- Side shields and integrated brow guard frame design
- Good fit with anatomically shaped nose bridge
- Prescription strength of up to a combined maximum +/- 8.00

uvex RX 5506	
Art. no.	6109.210
Ref. no.	5506 1725 56/18
Frame eye size	56 mm
Bridge width	18 mm
Colour	light grey, translucent

previously: uvex 9134 meteor



8591 55/17 matt gunmetal



8591 55/17 anthracite



8591 55/17 dark bronze

uvex 8591

- A quadra shaped gents frame with single bridge bar
- Adjustable soft nose pads for increased comfort
- Clear side shields for enhanced wearer safety
- Prescription strength of up to a combined maximum +/- 8.00

uvex 8591			
Ref. no.	8591	8591	8591
Frame eye size	55mm	55mm	55mm
Bridge width	17mm	17mm	17mm
Colour	anthracite	matt gunmetal	dark bronze

Prescription safety spectacles

Basic collection metal frames



5102 1400 53/20



5104 6054 56/21

uvex RX 5102

- Fashionable, aviator-style metal frame
- Transparent side shields
- Anatomically adjustable nose bridge and easily adjustable earpieces deliver exceptional fit
- Prescription strength of up to a combined maximum +/- 8.00

uvex RX 5102	
Art. no.	6109.101
Ref. no.	5102 1400 53/20
Frame eye size	53 mm
Bridge width	20 mm
Colour	gunmetal, matt

Previously: uvex 9256 pilot

uvex RX 5104

- Large metal frame design with double bridge
- Transparent side shields
- Anatomically adjustable, soft nose pads and easily adjustable earpieces deliver exceptional fit
- Prescription strength of up to a combined maximum +/- 8.00

uvex RX 5104	
Art. no.	6109.106
Ref. no.	5104 6054 56/21
Frame eye size	56 mm
Bridge width	21 mm
Colour	gold, havanna

Previously: uvex F 300



5101 1018 56/17

uvex RX 5101

- Classic design metal frame with double bridge
- Side shields made of wire mesh for good air circulation
- Anatomically adjustable, soft nose pads and easily adjustable earpieces deliver exceptional fit
- Arms with sprung hinges and easily adjustable earpieces
- Prescription strength of up to a combined maximum +/- 8.00

uvex RX 5101	
Art. no.	6109.103
Ref. no.	5101 1018 56/17
Frame eye size	56 mm
Bridge width	17 mm
Colour	black, silver

Prescription safety spectacles

Basic collection metal frames



5105 1800 50/20



5106 1400 52/20

uvex RX 5105

- Metal frame with flat profile
- Transparent side shields
- Anatomically adjustable nose bridge and easily adjustable earpieces deliver exceptional fit
- Prescription strength of up to a combined maximum +/- 8.00

uvex RX 5105	
Art. no.	6109.107
Ref. no.	5105 1800 50/20
Frame eye size	50 mm
Bridge width	20 mm
Colour	silver

Previously: uvex 9153

uvex RX 5106

- Classic design metal frame
- Transparent side shields
- Anatomically adjustable nose bridge and easily adjustable earpieces delivers exceptional fit
- Prescription strength of up to a combined maximum +/- 8.00

uvex RX 5106	
Art. no.	6109.109
Ref. no.	5106 1400 52/20
Frame eye size	52 mm
Bridge width	20 mm
Colour	gunmetal, matt

Previously: uvex 9254 greystar



5107 6200 49/20



5108 3400 56/19

uvex RX 5107

- Metal frame with oval-shaped lenses
- Transparent side shield
- Anatomically adjustable nose bridge and easily adjustable earpieces delivers exceptional fit
- Prescription strength of up to a combined maximum +/- 8.00

uvex RX 5107	
Art. no.	6109.111
Ref. no.	5107 6200 49/20
Frame eye size	49 mm
Bridge width	20 mm
Colour	antique gold

Previously: uvex 9154 starlet

uvex RX 5108

- Slim, expressive metal frame
- Transparent side shields
- Very good fit with anatomically adjustable nose bridge and easily adjustable earpieces
- Prescription strength of up to a combined maximum +/- 8.00

uvex RX 5108	
Art. no.	6109.113
Ref. no.	5108 3400 56/19
Frame eye size	56 mm
Bridge width	19 mm
Colour	steel blue

Previously: uvex 9155 mercury

Prescription safety spectacles

Basic collection metal frames



8588 55/17 brushed gold



8588 55/17 black



8588 55/17 shiny dark bronze

uvex 8588

- A quadra shaped gents frame with double bridge bar
- Adjustable soft nose pads for increased comfort
- Clear side shields for enhanced wearer safety
- Prescription strength of up to a combined maximum +/- 8.00

uvex 8588	8588	8588	8588
Ref. no.	8588	8588	8588
Frame eye size	55mm	55mm	55mm
Bridge width	17mm	17mm	17mm
Colour	black	brushed gold	shiny dark bronze



9158 gunmetal



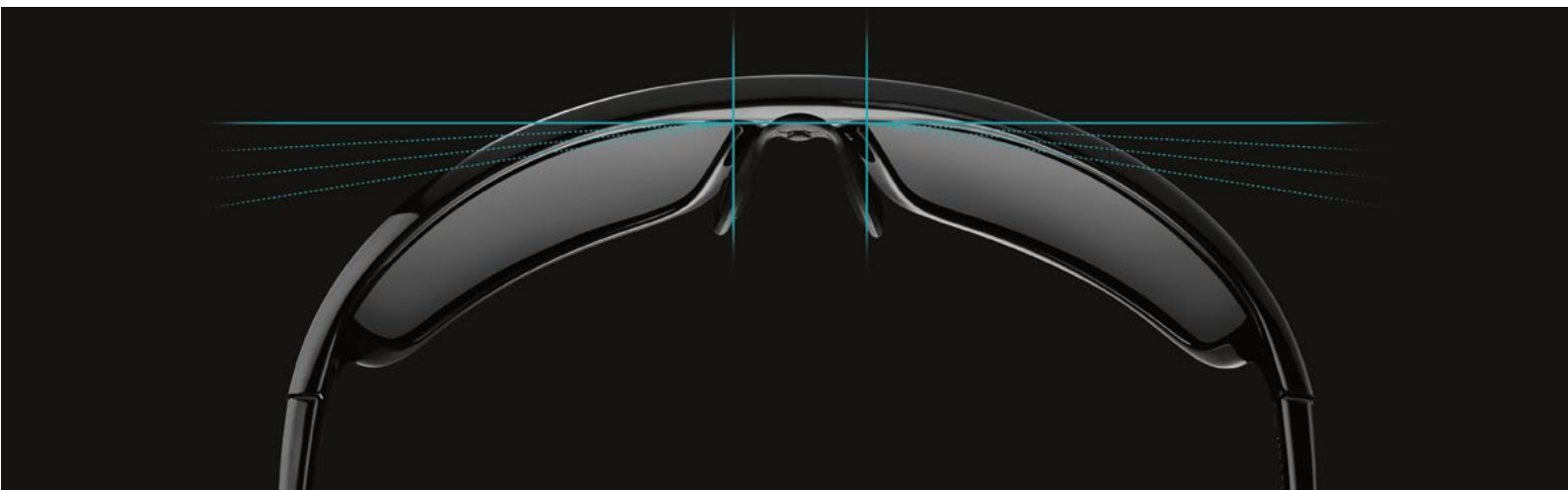
9158 gold

uvex 9158

- The senator is a very popular classic style safety prescription spectacle
- Features a strap nose bridge helping to alleviate pressure
- Available in various sizes for better protection and comfort and will fit an increased number of wearers
- Prescription strength up to a combined +/- 8.00

uvex 9158	9158	9158
Ref. no.	9158	9158
Frame eye size	54mm,	52mm, 54mm, 56mm
Bridge width	18 mm	18 mm
Colour	gunmetal	gold

Previously: uvex senator



uvex RX sp frames

Make a statement with the uvex RX sp collection which stands out due to its sporty design and appealing frame colour combinations .

All protection functions are fully integrated into the frame design requiring no separate side guards which is commonly the case with conventional protective spectacles.

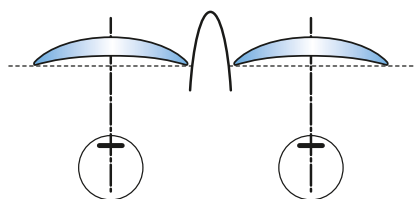
The wraparound design offers the perfect fit and maximum protection thanks to its wide side arms and curvature of the lens. As with all uvex models, only the highest quality plastics are used in its protection.

uvex anatomic sport lens

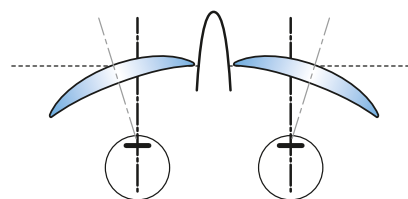
The stronger curve of the uvex RX sp frame positions the lenses at an angle straight in front of the eye. We only use the specially developed uvex anatomic sport glazing to deliver maximum optical clarity.

This means:

- that we only use lenses with a base curve identical to that of the frame.
- that prescription values need to be recalculated based on the tilted position of the lenses. This will be considered for the glazing process.



Conventional prescription glasses:
The planes of the right and left lenses are virtually congruent.



Spectacles with more strongly curved lenses:
The planes of the right and left lenses are tilted toward one another.

Prescription safety spectacles

uvex RX sp



5512 5573 65/16



5512 1348 65/16



5512 assembled with uvex tight-fit-kit



5512 assembled with uvex tight-fit-kit

uvex RX sp 5512

- Sporty, plastic wraparound design with curved lenses and anatomic sport glazing
- Supplied with uvex tight-fit-kit consisting of headband and foam seal
- Side shield and integrated brow guard frame design
- The arms can be replaced with a headband for a more secure fit when working in extreme conditions
- The foam material guarantees a close and firm fit
- Very good fit with anatomically adjustable, soft nose bridge
- Sporty side arms with a combination of soft and hard components ensure increased comfort and non-slip fit
- Prescription strength of up to a combined maximum +/- 3.50

Applications in combination with the tight-fit-kit

- Working in extreme situations, such as overhead or in confined spaces
- Working with fluids (drops) or chips and dust

Note:

- Single vision minimum PD = 32 each eye
- Varifocal (Pro Work) minimum PD = 32 each eye
minimum height = 20mm
- Varifocal (Optima) minimum PD = 32 each eye
minimum height = 20mm
- Surcharge applies for the Optima lens

uvex RX sp 5512

Art. no.	6109.220	6109.221
Ref. no.	5512 5573 65/16	5512 1348 65/16
Frame eye size	65 mm	65 mm
Bridge width	16 mm	16 mm
Colour	brown, olive	anthracite, orange

uvex RX sp 5513

- Sporty, plastic “wraparound” design with large lenses and anatomic sport glazing
- Side shield and integrated brow guard frame design
- Good fit due to anatomically shaped soft nose bridge
- Sporty arms with a combination of soft and hard components ensure increased comfort and non-slip fit
- Prescription strength of up to a combined maximum +/- 3.50

Note:

- Single vision minimum PD = 32 each eye
- Varifocal (Pro Work) minimum PD = 32 each eye
minimum height = 20mm
- Varifocal (Optima) minimum PD = 32 each eye
minimum height = 20mm
- Surcharge applies for the Optima lens



5513 1577 62/16

uvex RX sp 5513

Art. no.	6109.222
Ref. no.	5513 1577 62/16
Frame eye size	62 mm
Bridge width	16 mm
Colour	grey, light green

Prescription safety spectacles

uvex RX sp



5519 5573 56/21

uvex RX sp 5519

- Plastic frame with sporty wraparound design
- Anatomically shaped, soft nose bridge
- Side shields and integrated brow guard frame design
- Specially-shaped frame edge provides protection against particles from below
- Easily adjustable soft-form comfort ear pieces
- Prescription strength of up to a combined maximum +/- 6.00

uvex RX sp 5519		
Art. no.	6109.223	6109.224
Ref. no.	5519 5573 56/21	5519 1371 56/21
Frame eye size	56 mm	56 mm
Bridge width	21 mm	21 mm
Colour	brown, olive	anthracite, petrol

Previously: uvex 5509



5519 1371 56/21



5510 1217 62/17

uvex RX sp 5510

- Sporty, plastic “wraparound” design with curved lenses and anatomic sport glazing
- Side shield and integrated brow guard frame design
- Good fit with anatomically shaped soft nose bridge
- Sporty arms with a combination of soft and hard components ensure increased comfort and non-slip fit
- Prescription strength of up to a combined maximum +/- 6.00
- For varifocals minimum PD = 32 each eye, minimum height 18mm

uvex RX sp 5510		
Art. no.	6109.216	6109.217
Ref. no.	5510 1217 62/17	5510 1248 62/17
Frame eye size	62 mm	62 mm
Bridge width	17 mm	17 mm
Colour	matt black, light grey	matt black, orange



5510 1248 62/17

uvex prescription goggles

uvex goggles with inserts

When a standard prescription safety frame does not give the full protection against impact, chemical and liquid splash or dust particles; or the risk assessment specifies a goggle – uvex has the solution.

- Prescription insert fitted securely behind the goggle lens
- All 3 products include optimum non-allergenic seals
- The uvex skyguard NT RX features fully adjustable side arms offering low energy impact protection and enables the wearer to achieve an individual fit. Whereas, the uvex carbonvision RX and uvex ultrasonic RX goggles provide medium energy impact protection with a wide, adjustable elasticated headband
- All 3 products feature uvex's permanent anti-fog coating on the inside of the lens and a scratch resistant coating on the outside



uvex skyguard NT RX

- The uvex skyguard NT prescription insert comes as a complete unit and offers wear protection against large dust particles and liquid splash
- Combining high-tech hard and soft materials the spectacle creates a soft effective seal around the eyes which is easy to clean
- The side arms can be adjusted for a secure, comfortable fit
- The uvex skyguard NT is a close fitting, wraparound spec for unhindered vision

- Permanent uvex anti-fog lens coating on the inside, scratch resistant on the outside - offers increased safety and prolongs the life of the product
- The seal and prescription insert can easily be replaced

uvex skyguard NT RX	
Art. no.	6108.200
Frame eye size	47 mm
Bridge width	22 mm
Colour	blue/black



uvex carbonvision RX

- The ideal choice when you require the protection level of goggle and the lowest profile of size and weight in one product
- This close fitting goggle is supplied with the uvex supravision extreme, permanent antifog coating on the inside, scratch resistant on the outside
- Comes as a complete unit and offers wearer protection against medium energy impacts, large dust particles and liquid splash
- Easy to fit

- Provides absolute comfort with no leakage to the goggle seal due to the lack of side arms
- Combines high-tech hard and soft materials creating a soft effective seal around the eyes which is easy to clean

uvex carbonvision RX	
Art. no.	6108.201
Frame eye size	47 mm
Bridge width	22 mm
Colour	grey/black



uvex ultrasonic goggle with insert

- This unique prescription goggle insert is compatible with the market leading uvex ultrasonic goggle
- Easy to fit
- Provides absolute comfort with no leakage to the goggle seal due to the lack of side arms
- Comes complete with goggle
- The innovative ultrasonic frame design combines hard and soft components creating a soft effective seal around the eyes, protecting the wearer from dust and liquid splash

- The goggle also features uvex's supravision excellence lens coating - permanent anti-fog on the inside and scratch resistant on the outside. Helps prolong the life of the product and is ideal for strenuous tasks

uvex ultrasonic goggle with insert	
Art. no.	9302.245
Frame eye size	47 mm
Bridge width	17 mm
Colour	orange/grey



uvex ultrasonic goggle insert

Prescription safety spectacles

Focus types · Lens materials · Tinting

Single vision lenses

Single vision lenses correct long and short-sightedness.

Multi-focal lenses

In addition to correcting distance vision, multi-focal glasses correct long-sightedness and also correct intermediate distances, if applicable. Multi-focal glasses are required when the eyes are no longer able to adjust easily due to the natural aging process. Small objects, just in front of the eye, are no longer clearly discerned (so-called age related long-sightedness, presbyopia).

Bifocal

- Visibly ground segment for near vision ("reading field")
- Abrupt transition from distance to near vision at the edge of the segment
- Instant wearer acceptance: distinct edge helps eyes to adjust
- Intermediate ranges are not corrected

Multifocal

- Gradual transition from distance to near vision, known as progressive lenses
- Invisible progression also corrects in-between distances
- Clear vision at all viewing distances
- May require an initial phase of adjustment

Lens materials

Polycarbonate

Additional labelling: PC

- Organic material with very high impact resistance
- Only limited resistance to chemicals
- Mechanical strength, class "F" (45 m/sec)

CR39

Additional labelling: plastic

Safety spectacles should always be modified otherwise the tensile strength is too low. The middle of the lens must be thicker in order to meet the requirements for tensile strength.

- Light weight organic material
- Very good optical performance even for high prescriptions
- Suitable for working with chemicals and paints/varnishes
- Good scratch resistance due to hard layer
- Mechanical strength, class "S" (falling ball test)

Hardened glass

Additional labelling: silicate, mineral glass, glass

Safety spectacles should always be modified otherwise the tensile strength is too low. The tensile strength is increased through thermal or chemical hardening treatments.

- Mechanical strength, class "S" (falling ball test)
- Highly scratch-resistant surface
- Suitable for working with chemicals and paints/varnishes
- Heavy weight, not recommended for prescription values greater than +/-4.0 dpt
- Spark penetration when welding or grinding
- Implosion with liquid metals

Tinting

Tinted lenses provide effective protection against glare in areas with high light intensity (for example, sunlight).

Constant tinting

Solid tints are available on polycarbonate and CR39 lenses. Available in two colours and three densities.

Grey

- 82% LTF (light)
- 38% LTF (medium)
- 15% LTF (dark)

Brown

- 82% LTF (light)
- 38% LTF (medium)
- 15% LTF (dark)

Variable tinting – Variomatic™

- Lenses tint automatically, depending on the intensity of the UV radiation and temperature
- Tinting of between approx. 8% and 80%, in brown and grey
- Polycarbonate and CR39 prescription safety lenses



Prescription safety spectacles

Certification and labelling

The frames and lenses of tailor-made prescription safety spectacles in accordance with European standard 166 must feature a permanent mark.

Independent testing institutes carry out certification of the materials at regular intervals.

Frames and lenses must be marked with the manufacturer's identification and the mechanical strength and the lenses must also be marked with the optical quality class.

The different methods used to test mechanical strength vary according to the lens material. The test methods are defined under European standard EN 168.

If the mechanical strength level marked on the lens differs from that on the frame, the lower mechanical strength applies to the eye protection as a whole.

NB: due to marking requirements, it is not possible to purchase frames without lenses. Please do not modify any feature of the complete spectacles obtained from uvex as this may reduce their protective function.

Basic requirements in accordance with EN 166 (extract)

- Mechanical strength

Increased robustness	Impact resistance, low energy	Impact resistance, medium energy
Ball bearing drop test, Dropping a ball bearing (44 g) against the lens/supporting frame from a height of 1.30 m	Firing a ball bearing (0.88 g) against the lens/supporting frame, Impact speed 45 m/s (Δ 162 km/h)	Firing a ball bearing (0.88 g) against the lens/supporting frame, Impact speed 120 m/s (432 km/h)
Identification class: S	Identification class: F	Identification class: B

Additional requirements in accordance with EN 166 (extract)

- Resistance to liquids (droplets and splashes)
Labelling: 3
- Resistance to coarse dust (grain size >5µm)
Labelling: 4

Optional requirements in accordance with EN 166 (extract)

- Mechanical strength tested under extreme temperatures (+50°C and -5°C)
Labelling: T
This labelling is always in combination with mechanical strength (for example, FT).

Marking according to EN 166

Lens marking			
Manufacturer identification	Optical grade	Mechanical strength	
W = uvex	1	S = Increased robustness F = Low-energy impact (45 m/sec.) B = Medium-energy impact (120 m/s)	

Frames marking			
Manufacturer identification	Mechanical strength	Applicable EN standard	
W = uvex	S = Increased robustness F = Low-energy impact (45 m/sec.) B = Medium-energy impact (120 m/s)	166	

► “F” constitutes the highest mechanical strength class which a pair of spectacles can be allocated according to EN 166.

Discover the Optifog system
Fog-free, clear vision



Highly technological yet very easy to use, the Optifog Smart Textile was designed to provide maximum anti-fog performance with Optifog lenses, while simplifying users' daily lives.

The Optifog Smart Textile has the power to activate the Optifog coating which has been applied to the lenses.

Fine droplets of water which would usually inhibit vision by fogging the lens are spread uniformly across, in an invisible and fog-free layer.



Innovative smart textile with specific molecules activate the Optifog coating

The water droplets spread uniformly across the lens creating an invisible layer

Every 1 day:
Clean the Optifog lenses using the Optifog Smart Textile



Every 2 weeks:
Wash the Optifog lenses with water



Every 3 months
(or up to 450 activations):
Renew the Optifog Smart Textile



VDU spectacles

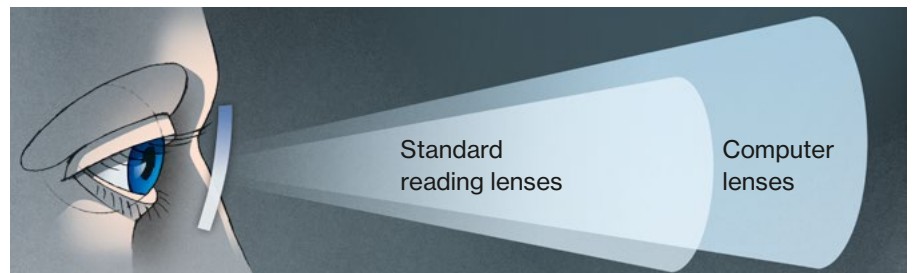
Spectacle lens technology and body posture at VDU workstations

The positioning of screen, keyboard and reading materials at office workstations can cause vision related problems.

To be able to focus properly at different distances, spectacle wearers adopt an unnatural head position and body posture, which can lead to posture-related discomfort.

As you become older, it becomes increasingly difficult for the lens within the eye to adjust to various distances.

Working in front of a VDU or performing other activities that involve alternating between different distances frequently causes fatigue as a result of the constant strain to the eye.



The diagrams and explanations outline the differences between the various lens options; the potential affect on the wearer and how the computer lens overcomes many of the issues experienced by those working at a VDU or computer.

Varifocal lenses

Varifocal lenses are designed to give the wearer focused vision from 40 cm onwards. However, to see the computer screen clearly through the middle and lower areas of the lens, the wearer has to change their normal head posture and hold their head at an unusually high angle. This can result in permanent straining of the shoulder and neck muscles.

Single-vision lenses

Single-vision lenses, as used in standard reading glasses, enable the wearer to see clearly at a normal reading distance of between 30 cm and 40 cm, which is the ideal distance for keyboards or printed documents. However, if an employee also wishes to see the computer screen and the surrounding area clearly, it is necessary to lower the head and look over the top of the reading glasses. This unnatural head posture puts a severe strain on the shoulder and neck muscles.

Computer lenses

Computer lenses give less accommodation for fatigue and greatly relieves eye strain related to computer screen use.

2V:

- Less head movements, unrestricted eye movements

3V:

- Wide intermediate/screen and reading fields
- Small zone at the top of the lens providing limited distance field
- Less head movements required to achieve intermediate and near vision

VDU spectacles

Computer lenses

Computer lenses are developed for those working in front of a computer monitor or undertaking work that requires frequently alternating between distances of approx. 40 cm and 3 m. The unique design facilitates unimpaired vision in the essential focal zones.

Recommended for

Wearer's using computers either at work or at home

Lens characteristics

Design based on the ergonomics of visual computer tasks.

2V

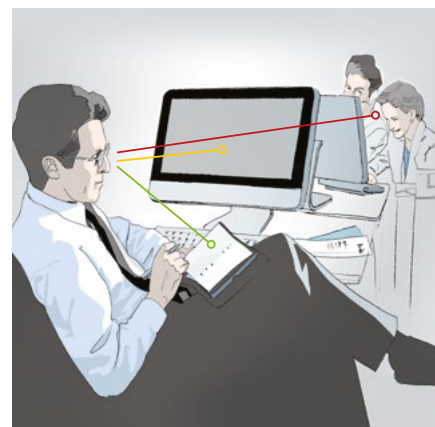
- Extremely wide area of clear vision for intermediate and near vision
- The upper portion of Varilux Computer 2V is 0.55D less positive than the ordered near prescription

3V

- Small semi-distance vision area, wide area for intermediate and near vision
- Lens power degresses fully to distance prescription at the top of the lens

Ordering and dispensing information

- Minimum frame overall depth (B measurement) 30mm
- Always advise patient imperatively that lenses are not suitable for driving
- **2V:**
 - Full near prescription and near monocular PDs
 - No fitting heights are required. Mounting reference line coincide with frame HCL (datum)
- **3V:**
 - Full distance prescription, reading add and distance monocular PDs
 - Fit on pupil centre

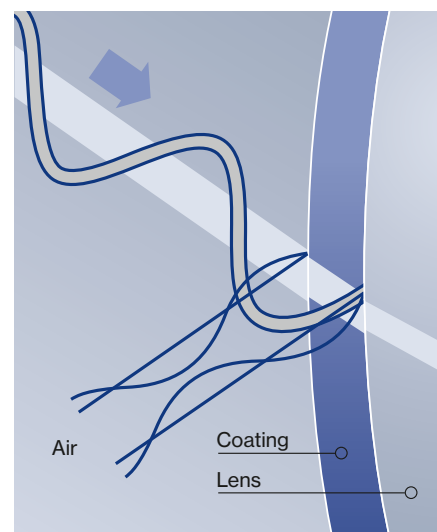


Anti-reflection

We recommend anti-reflective lenses for work at a VDU. An anti-reflective metal oxide coating is applied, which ensures a significant reduction in reflections on the inner and outer sides of the lens.

This increases the light transparency of the lens and vision clarity is improved. Vision discomfort as a result of reflections is reduced.

Multi anti-reflective
Maximum reflection reduction
Metal oxide is applied several times to each surface
Residual reflection < 2%



VDU spectacles
Metal frames



	uvex 3112	uvex 3107	uvex 3108	uvex 3116	uvex 3117	uvex 3118
Art. no.	6110.050	6110.033	6110.034	6110.054	6110.055	6110.056
Ref. no.	3112 1233 54/17	3107 1000 55/17	3108 1400 54/18	3116 5500 53/17	3117 1590 48/20	3118 7190 55/17
Frame eye size	54 mm	55 mm	54 mm	53 mm	48 mm	55 mm
Bridge width	17 mm	17 mm	18 mm	17 mm	20 mm	17 mm
Colour	black, blue	black	gun	brown	grey, vintage	petrol, vintage

VDU spectacles

Plastic frames and Nylon frame



3510 1025 52/17

uvex 3510	
Art. no.	6110.046
Ref. no.	3510 1025 52/17
Frame eye size	52 mm
Bridge width	17 mm
Colour	black, translucent



3507 5500 56/17

uvex 3507	
Art. no.	6110.038
Ref. no.	3507 5500 56/17
Frame eye size	56 mm
Bridge width	17 mm
Colour	brown

Metal Nylon Frame



2104 1900 54/18

uvex 2104	
Art. no.	6110.024
Ref. no.	2104 1900 54/18
Frame eye size	54 mm
Bridge width	18 mm
Colour	silver, matt

uvex Prescription Spectacles

For use with self contained breathing apparatus (BA)



uvex 9000

- For use with Sabra and Kemira respirator mask
- With short side arms this frame clips into slots moulded into the respirator

uvex 9000	
Colour.	Silver
Frame eye size	53 mm
Bridge width	18 mm

Available with CR39



uvex 9100

- Suitable for all respirators
- Thin metal side arms to fit close to the head to ensure little or no leakage when wearing a full face respirator

uvex 9100	
Colour	Silver
Frame eye size	44 mm
Bridge width	22 mm

Available with CR39



uvex 9250

- For use with Kemira, Interspiro respirator mask
- Designed to fit inside a full face respirator which can be easily adjusted

uvex 9250	
Colour	Silver
Frame eye size	50 mm
Bridge width	20 mm

Available with CR39



uvex 9255

- For use with Draeger Panorama respirator mask
- Fits in to mask with vertical adjustment
- Insert for Draeger Futura also available

uvex 9255	
Colour	Silver
Frame eye size	49 mm
Bridge width	18 mm

Available with CR39

uvex Prescription Multiple Form Request

(For new customers only. Not for individual employee use or for requesting a reprint of existing forms)

Date:

Is this request for PRE-PRINTED FORMS OR THE ORDERING FACILITY? (Delete as applicable) Pre-printed Forms Website

Is this request for: Safety: Quantity:
 (For printed forms only) Office: Quantity:
 Both: Quantity:

Where would you like printed forms to be sent? (Delete as applicable) End-user Distributor Optician

For the attention of:

Company Name:

Address: Telephone No:
 Fax No:

Tracking number (internal use only):

Distribution:

Authorising person:

Job title:

Phone/Fax number:

Email address:

(must be supplied if requesting to go on-line)

Frames allowed: All allowed? Please put a cross in the box:

Certain frames allowed? Please put a cross in the box and list them below (showing specific colours if applicable):

Frames/colours:

Lenses: **Safety:** CR39 Polycarbonate Glass All
 (Delete as applicable)

Lenses: **Office:** CR39 Polycarbonate All
 (Delete as applicable)

Special instructions: (Delete as applicable)

Safety
 No cosmetic extras.
 uvex pay for eye test fee and invoice company.
 All lens variants allowed. (single vision, bifocal and varifocal)
 Single vision only unless specified by authorising officer

Office
 No cosmetic extras.
 uvex pay for eye test fee and invoice company.
 All lens variants allowed. (single vision, bifocal and varifocal)
 Single vision only.

If you require a specific optician to be printed on the form, please enter their details here:

Once complete, fax form to 01252 731221 or scan and email to (Sandra Sherlow) s.sherlow@uvex.co.uk

uvex



UVEX SAFETY (UK) LTD
uvex House
Farnham Trading Estate
Farnham
Surrey
England
GU9 9NW

Tel.: 01252 731221
Fax: 01252 733968
E-Mail: prescription@uvex.co.uk
Internet: uvex-safety.co.uk

protecting people