

RX

PRESCRIPTION
SAFETY EYEWEAR



Riley 

Riley®

Prescription Safety Eyewear

The Riley® performance eyewear range incorporates a full portfolio of prescription models, all expertly manufactured and delivered efficiently via our UK-based eyecare laboratory.

As well as protecting in accordance with EN 166, each of the styles provides the wearer with great levels of comfort within contemporary frame designs.

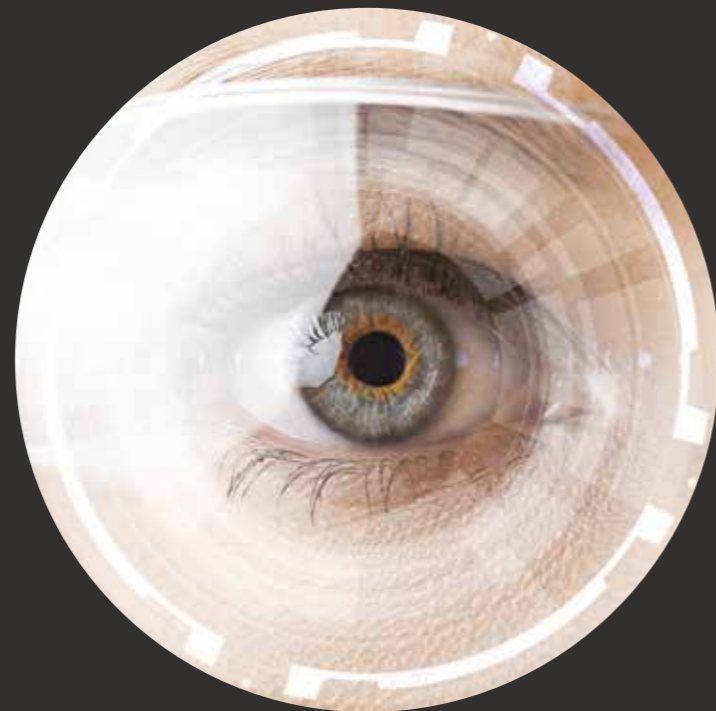
Several are available with Plano (non-prescription lenses), allowing the same frame style to be worn across the entire workforce.



Our RX frames protect with **Grade F impact resistance** as well as providing a sophisticated look.

The Importance of Eye Protection

Eye injuries can occur in many settings, but in working environments that have a high risk of flying particles, scratches, abrasions and foreign bodies entering the eye, ensuring the health and safety of employees' eyes during their working hours is of paramount importance.



Of the reported non-fatal injuries to employees during the period 2013-2016:

2096

were to the eye and other parts of the face*

131

were for loss or reduction of sight*

Furthermore **59%** of adults in the UK require eyewear with a prescription lens[‡]

Sources: *Reporting of Injuries, Diseases and Dangerous Occurrences Regulations (RIDDOR)
‡Optical Sector Report 2014/15

Why Choose Riley® RX

Wearers get great fitting eyewear which not only protects from hazards, but enables them to wear prescription lenses without having to wear an additional safety goggle over the top.

All models in the range are available with **VISION EASE®** impact and scratch resistant polycarbonate lenses and a complete range of options, including single-vision, bifocal and varifocal.

Bifocal and varifocal options are created using state-of-the-art Digital Inner Surface Technology, which

compared to traditional production methods, results in enhanced vision clarity and wearer comfort.

Owning a UK-based manufacturing and service facility means we are in total control of the prescription eyewear process and can ensure your business needs are met fully, quickly and efficiently.

All Riley® RX lenses are expertly manufactured in-house by highly experienced optical technicians in facilities certified to ISO 9000.

Easily manage orders via an online ordering system.

Robust Polycarbonate Lenses as Standard









- Heightened optical quality
- Class 1 optical clarity
- 100% protection from the sun's harmful UV rays
- 10 times more impact resistant than plastic or glass lenses (EN166 - Grade F)
- Lightweight
- Scratch resistant

Uniform Pricing

There's no complicated pricing structure in the Riley® RX range – all styles cost the same.

Take **Control** of Your Workforce's Orders

The Riley® Optical Ordering (ROO) portal is a web-based, easy-to-use system that allows you to:

-  Manage all your workforce's prescription orders in one place, regardless of how many sites you are responsible for
-  Authorise colleagues to place orders on your behalf
-  Easily add or upload employee data into the system
-  Check status of individual orders at a glance
-  Run reports and download into MS Excel
-  Manage re-orders with ease
-  Receive alerts when re-tests are advisable
-  Decide whether to limit the range of Riley® prescription frames available to employees

Once an order is initiated, an employee can visit any optician to obtain an eye test.

Contact your Riley® account manager today to gain access.

Alternatively, should the more traditional ordering method be preferred, we can provide you with printed order forms.

www.riley-eyewear.com/roo



RX Order Process

Whether you use the online Riley Optical Ordering portal or our printed forms, the process is easy and simple:

1. Printed forms or access to our online ordering portal will be provided to your company.
2. Your employees will be provided with a form and authorised.
3. The employee should take the form to an optician of their choice and have an eye test.
4. The optician will then send the form back to the Riley laboratory.
5. The laboratory will manufacture the eyewear and send back to the optician, along with payment for the optician's fees.
6. The employee will then return to the opticians to have their eyewear dispensed.
7. Your company will receive an invoice from your distributor with the employee's name on it for reference.
8. If using the online portal, the order status will be updated at every stage to give you visibility.

SPORT COLLECTION

Four sports-style designs are available with our clear polycarbonate lenses as standard and provide a comfortable fit.

RX

ROKKA™



Frame Colour: Red ● Green ●
Blue ● Grey ●

Lens (eyesize)	Nosepiece	Temple Length	Lens
59mm	17mm	135mm	● Clear

Prescription strength up to a combined maximum of +/- 6.00

SCRIPT™



Frame Colour: Black ●

Lens (eyesize)	Nosepiece	Temple Length	Lens
60mm	18mm	130mm	● Clear

Prescription strength up to a combined maximum of +/- 4.00

SWARM™

Frame Colour:
Black/Blue ●
Black/Grey ●

Black/Grey model features inner frame seal.

Lens (eyesize)	Nosepiece	Temple Length	Lens
59mm	18mm	130mm	● Clear

Prescription strength up to a combined maximum of +/- 6.00



SIVION™

Frame Colour: Carbon Fibre Effect Black ●

Lens (eyesize)	Nosepiece	Temple Length	Lens
61mm	18mm	125mm	● Clear

Prescription strength up to a combined maximum of +/- 4.00

OPTICAL INSERT

For use with:
Velia Goggle



Lens (eyesize)	Lens
50mm	● Clear

Prescription strength up to a combined maximum of +/- 8.00

Classic COLLECTION

The Classic Collection includes eight contemporary styles with slim, metal frames and transparent side shields.

RX



R101

Frame Colour: Shiny Anthracite ●
Tip Colour: Solid Black ●

Lens (eyesize)	Nosepiece	Temple Length	Lens
57mm	16mm	145mm	● Clear

Prescription strength up to a combined maximum of +/- 8.00

R102

Frame Colour: Brushed Anthracite ●
Tip Colour: Solid Black ●

Lens (eyesize)	Nosepiece	Temple Length	Lens
54mm	15mm	140mm	● Clear

Prescription strength up to a combined maximum of +/- 8.00



R103

Frame Colour: Shiny Dark Navy ●
Tip Colour: Solid Black ●

Lens (eyesize)	Nosepiece	Temple Length	Lens
55mm	16mm	140mm	● Clear

Prescription strength up to a combined maximum of +/- 8.00



R104 (TEAL)

Frame Colour: Shiny Teal ●
Tip Colour: Solid Black ●

Lens (eyesize)	Nosepiece	Temple Length	Lens
52mm	15mm	130mm	● Clear

Prescription strength up to a combined maximum of +/- 8.00



Gunmetal colour frame version available – see **R104 (GUNMETAL)** →

R105

Frame Colour: Brushed Brown ●
Tip Colour: Solid Black ●

Lens (eyesize)	Nosepiece	Temple Length	Lens
55mm	17mm	140mm	● Clear

Prescription strength up to a combined maximum of +/- 8.00



R107

Frame Colour: Gunmetal ●
Tip Colour: Solid Black ●

Lens (eyesize)	Nosepiece	Temple Length	Lens
56mm	16mm	145mm	● Clear

Prescription strength up to a combined maximum of +/- 8.00



R106

Frame Colour: Matt Black ●
Tip Colour: Solid Black ●

Lens (eyesize)	Nosepiece	Temple Length	Lens
55mm	17mm	145mm	● Clear

Prescription strength up to a combined maximum of +/- 8.00



R104 (GUNMETAL)

Frame Colour: Gunmetal ●
Tip Colour: Solid Black ●

Lens (eyesize)	Nosepiece	Temple Length	Lens
52mm	15mm	130mm	● Clear

Prescription strength up to a combined maximum of +/- 8.00

← Teal colour frame version available – see **R104 (TEAL)**

ON+SIGHT™

Our qualified optical professionals can visit your premises and conduct eye health checks and sight tests as part of a managed eye care programme.

This is a simple and efficient way to manage your employee eye-care needs on your site, at your convenience.



BENEFITS OF ON+SIGHT

- Ensure your employees are healthy in the job they perform
- Sight test includes a general health check
- Improves the duty of care you provide to your employees
- Ensure your employees are wearing the correct prescription
- No lost time off-site - we come to you!

The Riley® ON+SIGHT™ programme is available to qualifying companies in the UK and Ireland.

More information:

www.riley-eyewear.com
info@riley-eyewear.com



PO Box 657, Manchester,
M5 0LP, United Kingdom

Tel: +44 (0)161 877 4747
Fax: +44 (0)161 877 4746

UA03, 831st Street, Jebel Ali,
Dubai, United Arab Emirates

Tel: +971 (4) 882 9962
Fax: +971 (4) 882 9963

