

VWR[®] contamination control

01. STERILE AND
NON STERILE
ENVIRONMENTS



VWR® contamination control

Welcome to the VWR branded range of products for contamination control.

We understand that contamination events can have a big impact, with lost time, yield or cost, so we offer an extensive range of products to, not only prevent contamination, but also for ongoing monitoring and cleaning of your environment.

Whether you work in sterile or non sterile production facilities, within research labs or cleanrooms, this range of products offer quality and performance in use, while being supported by VWR value and logistics.

We are also market leaders in the provision of services to support process efficiency or regulatory compliance, and we offer custom manufacturing or kitting services with **VWRCatalyst**.



01

APPAREL AND GLOVES

Disposable and reusable garments
Pages 13-38

Masks
Pages 39-40

Eyewear
Page 40

Gloves and liners
Pages 41-45

Clogs
Page 46

Dispensers
Pages 47-50

02

CLEANING

Wipes
Pages 51-57

Swabs
Pages 58-59

Mops
Pages 60-61

Cleaning solutions
Page 62

03

ACCESSORIES

Chairs
Pages 63-65

Bucket liners
Page 65

Cleanroom covers
Page 66

Flooring
Pages 67-69

Tapes
Pages 70-71

Stationery
Pages 71-72

Cytotoxic spill kits
Page 73

04

MONITORING

Microbiological air sampling
Pages 74-77

Contact plates and Petri dishes for air and surface control
Pages 78-81

Swabs and slides for surface control
Pages 81-83

Media fill tests
Page 83

05

SUPPORTING SERVICES

Kitting
Page 84-85

Bioprocessing and single use solutions
Page 86-87

Reusable cleanroom garments

Quantus® - the attractive choice for high performance reusable garments

Garments are an essential factor in protecting the product from particulate and microbiological contamination through humans in controlled environments. So a well designed garment system, that demonstrates certain technical and functional characteristics, is essential. The material is permeable to water vapour and that, together with a generous fit, offers maximum comfort.





Quantus® - first choice for premium reusable garments

SUITABLE FOR DECONTAMINATION AND AUTOCLAVABLE

Our leasing partner specialises in EN ISO 14644 and EG GMP Guide (including Annex 1) requirements.

INDIVIDUAL DESIGN

Ensures optimum fit and functionality of the garments.

EASY TRACEABILITY

Thanks to special information on the label. Additional inclusion of chip and/or barcoding is possible.



Lap seam

HIGH QUALITY WORKMANSHIP

Workmanship is orientated to the requirements of the cleanroom application. By applying lap seams we ensure a high output of tight and secure seam enclosures.

HIGH QUALITY FABRICS

- 100% polyester weave with conductive yarn
- High wearing comfort
- Long life cycle
- Antimicrobial finish
- Twill and plain weave available
- Also available with PTFE coating

SIZING FROM XXS – XXL

All sizes are generously proportioned, allowing complete freedom of movement even when worn over full clothing. For an optimum fit, overshoes are also available from sizes S - XL.

TESTED FABRIC QUALITY

Technical and functional features of our fabrics are tested by independent institutes:

- Institut für Textil- und Verfahrenstechnik Denkendorf (ITV)
- Forschungsinstitut Hohenstein
- Over 10 years experience in gowning concepts and cleanroom behaviours
- Broad portfolio of fabrics/models meeting the highest technological standards and comfort demands
- Certified by independent institutes
- Pan-European consulting and application know-how
- Long-term partnerships in decontamination and leasing

Quantus[®]

fabric guide

Quantus[®] – fabric overview

FABRIC

Quantus[®] Comfort

Quantus[®] Standard

Quantus[®] Protect **PTFE coated**

Quantus[®] Protect Xtra **PTFE coated**

Quantus[®] Control **PTFE coated**

Quantus[®] ELEC 

RECOMMENDED CLEANROOM CLASSES

100 ISO 5 A/B	1000 ISO 6	10 000 ISO 7 C	100 000 ISO 8 D	*
100 ISO 5 A/B	1000 ISO 6	10 000 ISO 7 C	100 000 ISO 8 D	*
100 ISO 5 A/B	1000 ISO 6	10 000 ISO 7 C	100 000 ISO 8 D	*
100 ISO 5 A/B	1000 ISO 6	10 000 ISO 7 C	100 000 ISO 8 D	*
	1000 ISO 6	10 000 ISO 7 C	100 000 ISO 8 D	**
100 ISO 5 A/B	1000 ISO 6	10 000 ISO 7 C	100 000 ISO 8 D	*

* In combination with Quantus[®] Underwear the garment can also be used for cleanroom Class ISO 3 - 4.

** In combination with Quantus[®] Underwear the garment can also be used for cleanroom Class ISO 5.

Quantus[®]AreaDress **PTFE coated**

Quantus[®] Underwear Standard

Quantus[®]Underwear Standard **PES/cotton**



Quantus® Standard
A breathable, high quality polyester. Comfortable, hard wearing for long life and an antimicrobial finish.

Quantus® Comfort
Our highest quality polyester fabric with a smaller pore size for a better barrier against particles. Really soft and comfortable garments that have an antimicrobial finish.

Quantus® Protect
Designed for use in cleanroom and critical areas, where a PTFE finish is required as protection against liquid splashes. The fabric has good tensile strength, is durable and offers excellent wearer comfort.

Quantus® Protect Xtra
This fabric is based on our Protect fabric and developed for use in critical areas like operating rooms or sterile environments. The PTFE finish gives both very good splash protection against liquids and resistance to microbial penetration.

Quantus® Control
A highly breathable polyester designed for controlled production environments. Offering excellent tensile strength and durability, it also features a durable antimicrobial finish with PTFE coating (splash protection).



Quantus® AreaDress
A further development of standard underwear for use in controlled production environments. The polyester fabric is extremely breathable, and has a PTFE finish for good splash protection.

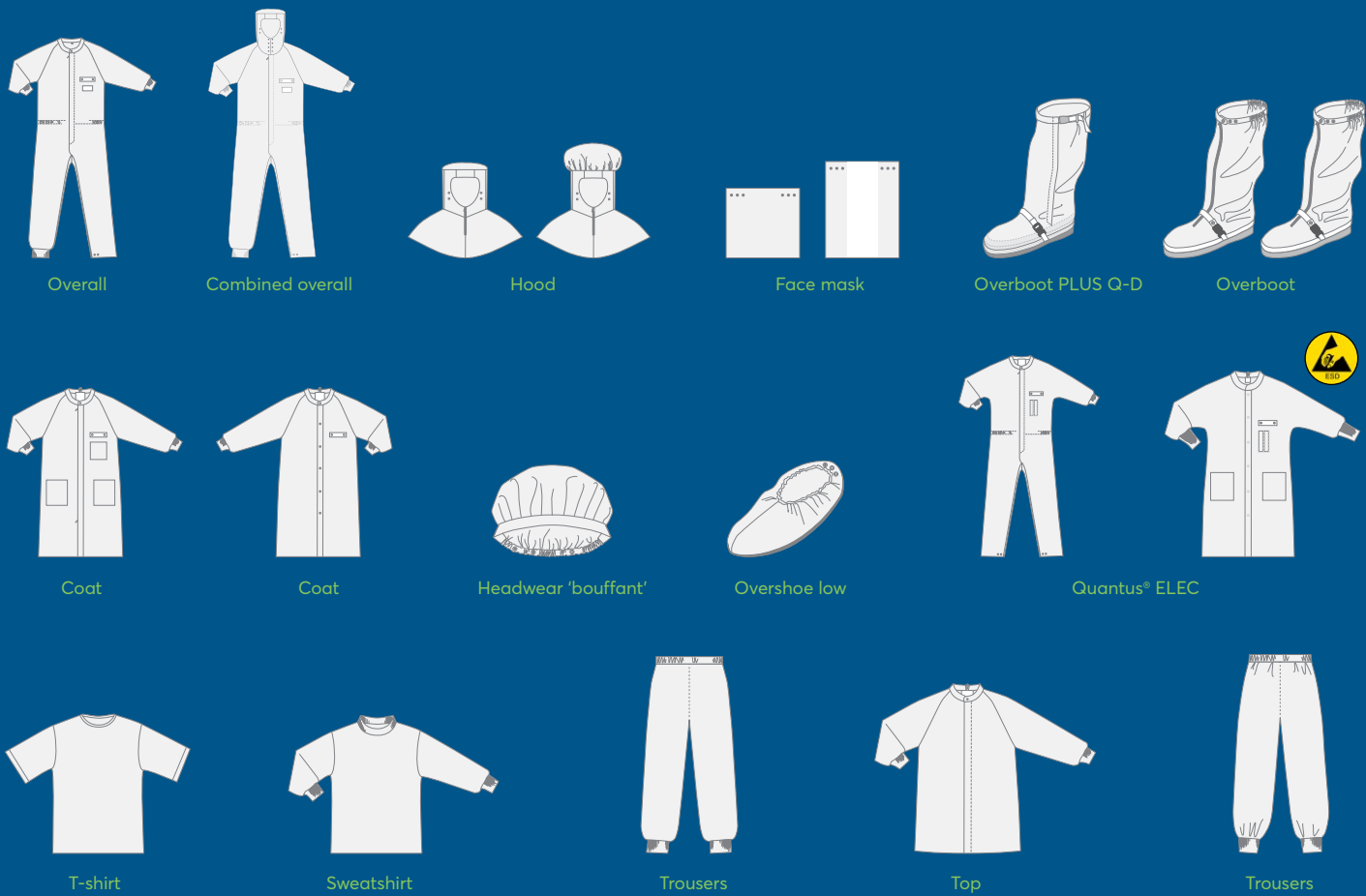
Quantus® Underwear Standard
A breathable, high quality polyester microfibre material with carbon specifically developed for use as underwear in combination with a cleanroom overall. It is very soft and comfortable with a permanent antimicrobial finish. Wear under your reusable or disposable garments as a pre-filter to allow open pore fabric to be used in a higher cleanroom class.

Quantus® Underwear Standard
Hard wearing, low maintenance jersey function wear. PES inside, cotton outside.

Quantus® ELEC
Conductive polyester fabric (96% polyester, 4% carbon yarn) specifically designed for use in anti-static protection environments (ISO 5-8). The antimicrobial treatment inhibits microbial growth on the fabric, minimises unpleasant odours and maintains good hygiene. Excellent ESD properties are combined with excellent comfort and innovative cuts.



Quantus® - model overview



This is an overview of the available items. Individual models and modifications to existing garments are available on request.



Overview

ISO 5 - 8*

Standard ST and Comfort CM

Colours:



white WH



light blue LB



green GN

Sizes:

Coverall
- Cuff at ankles
- PS at ankles



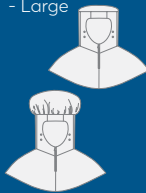
XXS - XXXL

**Combined
coverall**
- Cuff at ankles
- PS at ankles



XXS - XXXL

Hood
- Head attachment
- Flat
- Large



XS - XL

Face mask
(universal + net
insert)



Universal size

**Overboot
PLUS Q-D**
Low sole model,
double reinforcement
on the gaiter, made
of outer fabric and
a special band out of
Control white fabric



XS - XL

Overboot
High sole model
- With ties
- With zip



S - XL

Coat
- Zip + pockets
- Zip w/o
pockets



XXS - XXXL

Coat
- Press studs w/o
pockets
- Press studs +
pockets



XXS - XXXL

**Headwear
'bouffant'**
- Elastic band



Universal size

Overshoe low
- Double
reinforcement
with fabric



M - XL

ISO 5 - 8*

Protect PT (PTFE)

Colours:



white WH



light blue LB

Sizes:

Coverall
- PS at ankles



XXS - XXXL

Hood
- Head attachment
- Flat



XS - XL

**Overboot PLUS
Q-D**
- Double
reinforcement
on the gaiter,
made of outer
fabric and a special
band out of
Control white
fabric



XS - XL

*In combination with QUANTUS Underwear the garment can also be used for cleanroom class ISO 3 - 4.

Recommended application in cleanroom classes:

ISO 5 - 8*

Protect Xtra PX (PTFE)

Colours:



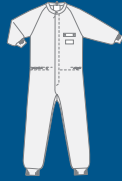
white WH



light blue LB

Sizes:

Coverall
- Cuff at ankles



XXS - XXXL

Hood
- Head attachment
- Flat



XS - XL

Overboot PLUS Q-D
- Double reinforcement on the gaiter, made of outer fabric and a special band out of Control white fabric



XS - XL

ISO 6 - 8

Control CT (PTFE)

Colours:



white WH



cell blue CB

Sizes:

Coverall
- Cuff at ankles



XXS - XXXL

Coat
- Zip
w/ o pockets



XXS - XXXL

ISO 7 - 8

AreaDress AD (PTFE)

Colours:



white WH

Sizes:

Top
- 2 way zip



XS - XXXL

Trousers
- Rubber waistband



XS - XXXL

ISO 8

Underwear Standard uw

Colours:



blue BU

Sizes:

T-shirt



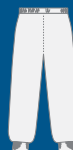
XS - XXXL

Sweatshirt



XS - XXXL

Trousers



XS - XXXL

*In combination with QUANTUS Underwear the garment can also be used for cleanroom class ISO 3 - 4.

no data
available

Underwear Standard Q7

Colours:

 white WH

Sizes:

T-Shirt
- 65/35 Cotton/PES



XS - XXXL

ISO 5 - 8*

ELEC



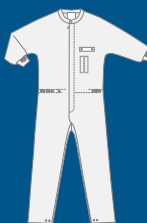
Colours:

 white WH

 light blue LB

Sizes:

Coverall ELEC
- PS at ankles
- Kimono-cut



XXS - XXXL

Mantel ELEC
- PS +
pockets
- Kimono-cut



XXS - XXXL

*In combination with Quantus® Underwear, the garment can also be used for cleanroom class ISO 3 - 4.

Abbreviations:

PS Press studs

PES Polyester

This is an overview of the available items. Individual models and modifications to existing garments are available on request.
Fringe sizes e.g. XXS, XS, XXL, XXXL can be subject to longer lead times

VWR Collection apparel – a solution for every environment

Whether you are looking for disposable or reusable, PPE protection or cleanroom compatibility, VWR has a selection of apparel to suit your needs.

Click on the images below, to see more of the range that fits your application.

REUSABLE

VWR® WHITE CLOTHING COLLECTION

Offers intelligent solutions for protecting people in many different applications in laboratories, as well as selections for meeting HACCP requirements, chemical repellent and ESD needs. Durable fabric garments suitable for industrial laundering.



QUANTUS® GARMENTS

All Quantus® garments (overall, coats, hoods, face masks, overboots and overshoes) are made from high quality, tested fabrics providing different characteristics.



QUANTUS® RE-USEABLE CLEANROOM GARMENTS

Quantus® garments and undergarments for wearer comfort and product protection.



QUANTUS® UNDERWEAR

In order to optimise the Quantus® garment system, we recommend the use of functional undergarments.

Learn more at
vwr.com/cleanroom

PPE

VWR CHF5CB CHEMICAL PROTECTIVE OVERALLS

Disposable overalls which provide type 5 and 6 barrier protection, protection against radioactive contamination and have an anti-static treatment on the outside.



Learn more at
vwr.com/safety

NON REGULATED

NON REGULATED DISPOSABLES FOR PRODUCTION

Head to toe options, from hairnets, through to overalls, aprons and overshoes.



CLEANROOM

STERILE AND NON-STERILE DISPOSABLE CLEANROOM GARMENTS (incl. goggles and gloves)



DISPOSABLE



BOUFFANT CAPS, VWR® BASIC

These disposable caps are made from a non woven, spunbonded polypropylene (SPP) fabric, which protects against dirt, grime and certain dry particulates in non hazardous environments.

- Free from natural rubber latex
- Available in a wide range of colours

Weight: 10 g/m²

100 pieces per bag, 10 bags per case.

Ø (mm)	Colour	Pk	Cat. No.
530	White	1.000	113-1459
530	Blue	1.000	113-8762
530	Green	1.000	113-8874
530	Yellow	1.000	113-8875
530	Red	1.000	113-8876
530	Orange	1.000	113-8877
580	White	1.000	113-8878
580	Blue	1.000	113-8879
580	Green	1.000	113-8880

Ø (mm)	Colour	Pk	Cat. No.
580	Yellow	1.000	113-8881
580	Red	1.000	113-8882
580	Orange	1.000	113-8883
610	White	1.000	113-1460
610	Blue	1.000	113-8884
610	Green	1.000	113-8885
610	Red	1.000	113-8886
610	Yellow	1.000	113-8887
610	Orange	1.000	113-8888



BOUFFANT CAPS, WITH LATEX, VWR® BASIC

VWR Basic bouffant caps are manufactured from a strong, lightweight and breathable spunbonded polypropylene (SPP) fabric, which protects against dirt, grime and certain dry particulates in non hazardous environments.

- With latex
- Lightweight and breathable first line barrier protection
- Tested and manufactured in an ISO certified facility that is lot-controlled and validated through independent laboratory testing

This garment is ideal for less critical areas or pre-gowning entry rooms.

Type	Ø (mm)	Colour	Pk	Cat. No.
With latex	530	White	1.000	113-1461
With latex	610	White	1.000	113-1462



ESD BOUFFANT CAPS, VWR® BASIC

These disposable caps are made from a non woven, spunbonded polypropylene (SPP) fabric, which protects against dirt, grime and certain dry particulates in non hazardous environments.

- Free from natural rubber latex
- Anti-static properties

Weight: 10 g/m²

100 pieces per bag, 10 bags per case.

Ø (mm)	Colour	Pk	Cat. No.
580	White	1.000	113-8900



BOUFFANT CAPS, VWR® ADVANCED

These disposable caps are made from a non woven, spunbonded polypropylene (SPP) fabric, which protects against dirt, grime and certain dry particulates in non hazardous environments.

- Free from natural rubber latex
- Available in white and blue

Weight: 16 g/m²

100 pieces per bag, 10 bags per case.

Ø (mm)	Colour	Pk	Cat. No.
530	White	1.000	113-8889
530	Blue	1.000	113-8890
580	White	1.000	113-8891
580	Blue	1.000	113-8892
610	White	1.000	113-8893
610	Blue	1.000	113-8894



BOUFFANT CAPS WITH VISOR, VWR®

These disposable caps, with peak, are made from a non woven, spunbonded polypropylene (SPP) fabric, which protects against dirt, grime and certain dry particulates in non hazardous environments.

- Free from natural rubber latex
- Available in white and blue

Weight: 10 g/m² (cap), 100 g/m² (peak)

100 pieces per bag, 10 bags per case.

Colour	Pk	Cat. No.
White	1.000	113-8908
Blue	1.000	113-8909



MOB CAPS, SINGLE ELASTIC, VWR® BASIC

These disposable pleated caps are made from a non woven, spunbonded polypropylene (SPP) fabric, which protects against dirt, grime and certain dry particulates in non hazardous environments.

- Free from natural rubber latex
- Single elastic
- Available in a wide range of colours

Weight: 10 g/m²

100 pieces per bag, 10 bags per case.

Ø (mm)	Colour	Pk	Cat. No.
530	White	1.000	113-8850
530	Blue	1.000	113-8851
530	Green	1.000	113-8852
530	Red	1.000	113-8853
530	Yellow	1.000	113-8854
530	Orange	1.000	113-8855
580	White	1.000	113-8856
580	Blue	1.000	113-8857
580	Green	1.000	113-8858
580	Red	1.000	113-8859
580	Yellow	1.000	113-8860
580	Orange	1.000	113-8861



MOB CAPS, DOUBLE ELASTIC, VWR® BASIC

These disposable pleated caps are made from a non woven, spunbonded polypropylene (SPP) fabric, which protects against dirt, grime and certain dry particulates in non hazardous environments.

- Free from natural rubber latex
- Double elastic
- Available in a wide range of colours

Weight: 10 g/m²

100 pieces per bag, 10 bags per case.

Ø (mm)	Colour	Pk	Cat. No.
530	White	1.000	113-8863
530	Blue	1.000	113-8862
530	Green	1.000	113-8864
530	Red	1.000	113-8865
530	Yellow	1.000	113-8866
530	Orange	1.000	113-8867

Ø (mm)	Colour	Pk	Cat. No.
580	White	1.000	113-8869
580	Blue	1.000	113-8868
580	Green	1.000	113-8870
580	Red	1.000	113-8871
580	Yellow	1.000	113-8872
580	Orange	1.000	113-8873



SNOOD CAPS, VWR®

These disposable caps, with hairnet and peak, are made from a non woven, spunbonded polypropylene (SPP) fabric, which protects against dirt, grime and certain dry particulates in non hazardous environments.

- Free from natural rubber latex
- Total hair covering thanks to hairnet
- Available in white and blue

Weight: 10 g/m² (hairnet), 40 g/m² (top), 100 g/m² (peak)

100 pieces per bag, 10 bags per case.

Colour	Pk	Cat. No.
White	1.000	113-8906
Blue	1.000	113-8907



PEAKED CAPS, VWR®

These disposable caps with peak are made from a non woven, spunbonded polypropylene (SPP) fabric, which protects against dirt, grime, and certain dry particulates in non hazardous environments.

- Free from natural rubber latex
- Available in white and blue

Weight: 40 g/m² (top), 100 g/m² (peak)

100 pieces per bag, 10 bags per case.

Colour	Pk	Cat. No.
White	1.000	113-8904
Blue	1.000	113-8905



ESD MOB CAPS, VWR® BASIC

These disposable pleated caps are made from a non woven, spunbonded polypropylene (SPP) fabric, which protects against dirt, grime, and certain dry particulates in non hazardous environments.

- Free from natural rubber latex
- Single elastic
- Anti-static properties

Weight: 10 g/m²

100 pieces per bag, 10 bags per case.

Ø (mm)	Colour	Pk	Cat. No.
530	White	1.000	113-8899



MOB CAPS, DETECTABLE, VWR® BASIC

These disposable caps are made from a non woven, spunbonded polypropylene (SPP) fabric, which protects against dirt, grime and certain dry particulates in non hazardous environments.

- Free from natural rubber latex
- Double elastic
- Metal detectable, therefore ideal for use in the food processing industry

Weight: 10 g/m²

100 pieces per bag, 10 bags per case.

Ø (mm)	Colour	Pk	Cat. No.
530	White	1.000	113-8895
530	Blue	1.000	113-8896
530	Green	1.000	113-8897
530	Red	1.000	113-8898



BEARD COVER, VWR® BASIC

This disposable beard cover is made from a non woven, spunbonded polypropylene (SPP) fabric, which protects against dirt, grime and certain dry particulates in non hazardous environments.

- Free from natural rubber latex
- Available in white and blue

Weight: 10 g/m²

100 pieces/bag, 10 bags/case.

Colour	Pk	Cat. No.
White	1.000	113-8902
Blue	1.000	113-8903



BEARD COVERS, VWR® BASIC, SPP

VWR Basic SPP beard covers are manufactured from a strong, lightweight and breathable spunbonded polypropylene (SPP) fabric, which protects against dirt, grime, and certain dry particulates in non hazardous environments.

- Lightweight and breathable first line barrier protection

This garment is ideal for less critical areas or pre-gowning entry rooms. It is tested and manufactured in an ISO certified facility, lot-controlled and validated through independent laboratory testing.

Diameter (stretched): 406 mm

Type	Colour	Pk	Cat. No.
With latex	White	1.000	113-1463
Latex-free	White	1.000	113-1464



HOODS WITH INTEGRATED FACE MASK, VWR®

These disposable hoods, with 2 ply face mask, are made from a non woven, spunbonded polypropylene (SPP) fabric, which protects against dirt, grime and certain dry particulates in non hazardous environments.

- Free from natural rubber latex
- Available in a wide range of colours

Weight: 10 g/m²

50 pieces per bag, 10 bags per case.

Colour	Pk	Cat. No.
White	500	113-8911
Blue	500	113-8912
Red	500	113-8913
Yellow	500	113-8914
Green	500	113-8918
Orange	500	113-8920



CLEANROOM HOOD WITH INTEGRATED FACE MASK

This sterile protective hood is made from breathable SMS fabric. The integrated face mask is manufactured from a combination of meltblown PP and spunbonded PP.

- Mask filters 90% of particles as small as 0,1 µm
- Ties in the back
- No gaps between hood and mask
- Elastics are free from natural rubber latex and silicone
- Helmke drum test: Cat. II
- Sterile (SAL 10⁻⁶)

Ideal for use in sterile cleanroom production or research.

Suitable for use in Class 1000, ISO 6 cleanrooms.

Weight (hood): 60 g/m²

Vacuum packed for added sterility assurance.

Colour	Pk	Cat. No.
White	125	113-8807



APRONS, PE, VWR® BASIC

These disposable aprons are made of PE film.

- Free from natural rubber latex
- Available in two different sizes

Thickness: 20 µm

50 pieces per bag, 10 bags per case.

Size (mm)	Thickness (µm)	Colour	Pk	Cat. No.
1250×800	20	White	500	113-9093
1400×800	20	White	500	113-9094



APRONS, PE, VWR® BASIC

These disposable aprons are made of PE film.

- Free from natural rubber latex
- Available loose or blocked

L×W: 1250×800 mm / 1400×800 mm / 1600×800 mm

Thickness: 20, 50 or 100 µm

Description	Size (mm)	Thickness (µm)	Colour	Pk	Cat. No.
50 pieces per bag, 10 bags per carton					
Blocked	1250×800	20	White	500	113-9095
Blocked	1250×800	20	Blue	500	113-9096
Blocked	1250×800	20	Yellow	500	113-9097
Blocked	1250×800	20	Green	500	113-9098
Blocked	1250×800	20	Red	500	113-9099
Loose	1250×800	20	Blue	500	113-9103
Loose	1250×800	20	Green	500	113-9104
Loose	1250×800	20	Red	500	113-9105
50 pieces per bag, 5 bags per carton					
Blocked	1250×800	50	Blue	250	113-9100
Blocked	1400×800	50	Blue	250	113-9101
Blocked	1600×800	50	Blue	250	113-9102
50 pieces per bag, 4 bags per carton					
Loose	1250×800	100	Blue	200	113-9106



ISOLATION GOWNS, VWR®

These disposable gowns, with back fastening, are made of non woven PP.

- Long sleeves, knitted cuffs
- Round neck
- Ties on neck and waist
- Latex-free

Weight: 30 g/m²

Colour	Length	Pk	Cat. No.
White	120	50	113-9048
Yellow	120	50	113-9049



ISOLATION GOWNS, VWR®

These disposable gowns, with back fastening, are made of non woven breathable SMS fabric. Ideal for use in healthcare environments and hospitals.

- Long sleeves, knitted cuffs
- Round neck
- Ties on neck and waist
- Latex-free

Weight: 45 or 60 g/m²

Colour	Size (cm)	Pk	Cat. No.
45 g/m²			
White	115×136	50	113-8315
Blue	115×136	50	113-8316
Green	115×136	50	113-8317
Red	115×136	50	113-8318
Pink	115×136	50	113-8319
Yellow	115×136	50	113-8320
60 g/m²			
White	115×136	50	113-8321
Blue	115×136	50	113-8322
Green	115×136	50	113-8323
Red	115×136	50	113-8324
Pink	115×136	50	113-8325
Yellow	115×136	50	113-8326



VISITOR COAT, PE, VWR® BASIC

This disposable visitor coat is made of PE film.

- Hood and press stud closure
- Free from natural rubber latex

Thickness: 15 µm

* One size fits all

50 pieces per bag, 10 bags per case.

Clothing size	Length (cm)	Colour	Pk	Cat. No.
U*	130	White	500	113-9092



VISITOR COATS, VELCRO® CLOSURE, VWR® BASIC

These disposable coats, with collar, are made from non woven, spunbonded polypropylene (SPP) fabric, which protects against dirt, grime and certain dry particulates in non hazardous environments.

- Velcro® closure
- Elastic wrist
- Free from natural rubber latex
- Available in white and blue

Weight: 30 g/m²

1 piece per bag, 50 bags per case.

Clothing size	Length (cm)	Colour	Pk	Cat. No.
XS	92	White	50	113-8955
S	96	White	50	113-8956
M	100	White	50	113-8957
L	104	White	50	113-8958
XL	108	White	50	113-8959
XXL	112	White	50	113-8960
3XL	116	White	50	113-8962
XS	92	Blue	50	113-8963
S	96	Blue	50	113-8964
M	100	Blue	50	113-8965
L	104	Blue	50	113-8966
XL	108	Blue	50	113-8967
XXL	112	Blue	50	113-8969
3XL	116	Blue	50	113-8971



VISITOR COATS, SPP, VWR® BASIC

These disposable visitor coats, with collar, are made from non woven SPP fabric.

- Press stud closure
- Elastic wrists
- Free from natural rubber latex

Weight: 30 g/m²

1 piece per bag, 50 bags per case.

Clothing size	Length (cm)	Colour	Pk	Cat. No.
XS	92	White	50	113-8933
S	96	White	50	113-8934
M	100	White	50	113-8937
L	104	White	50	113-8938
XL	108	White	50	113-8939
XXL	112	White	50	113-8941
3XL	116	White	50	113-8942
XS	92	Blue	50	113-8943
S	96	Blue	50	113-8944
M	100	Blue	50	113-8945
L	104	Blue	50	113-8946
XL	108	Blue	50	113-8947
XXL	112	Blue	50	113-8950
3XL	116	Blue	50	113-8952
XL	108	Green	50	113-8953



VISITOR COATS, SPP, WITH POCKETS, VWR® BASIC

These disposable visitor coats with collars are made from non woven SPP fabric.

- Press stud closure
- Elastic wrists
- One breast pocket or one breast and one side pocket
- Free from natural rubber latex

Weight: 30 or 40 g/m²

1 piece per bag, 50 bags per case.

Clothing size	Length (cm)	Colour	Pk	Cat. No.
With one pocket, 30 g/m²				
L	104	White	50	113-8972
XL	108	White	50	113-8973
XXL	112	White	50	113-8974
With two pockets, 40 g/m²				
L	104	White	50	113-8979
XL	108	White	50	113-8980
XXL	112	White	50	113-8982



ESD VISITOR COAT, SPP, VWR® BASIC

This disposable coat, with collar, is made from non woven, spunbonded polypropylene (SPP) fabric, which protects against dirt, grime and certain dry particulates in non hazardous environments.

- Press stud closure
- Elastic wrist
- Free from natural rubber latex
- Anti-static properties

Weight: 30 g/m²

1 piece per bag, 50 bags per case.

Clothing size	Length (cm)	Colour	Pk	Cat. No.
XXL	112	White	50	113-8954



VISITOR COATS, PP, WATERPROOF, VWR®

These disposable and waterproof visitor coats, with collar, are made from non woven laminated PP fabric.

- Press stud closure
- Elastic wrists
- Two pockets (one breast pocket, one side pocket)
- Free from natural rubber latex

Weight: 48 g/m²

1 piece per bag, 50 bags per case.

Clothing size	Colour	Pk	Cat. No.
L	White	50	113-8983
XL	White	50	113-8984
XXL	White	50	113-8994



FROCKS, VWR® BASIC, SPP

VWR Basic SPP frocks are manufactured from a strong, lightweight and breathable spunbonded polypropylene (SPP) fabric, which protects against dirt, grime and certain dry particulates in non hazardous environments.

- Snap collar, Raglan sleeves, snap closure
- Elasticated cuffs, no pockets
- Lightweight and breathable first line barrier protection

This garment is ideal for less critical areas or pre-gowning entry rooms. It is tested and manufactured in an ISO certified facility that is lot-controlled and validated through independent laboratory testing.

Clothing size	Colour	Pk	Cat. No.
M	White	30	113-1151
L	White	30	113-1152
XL	White	30	113-1153
XXL	White	30	113-1154
3XL	White	30	113-1155



FROCKS, WITH VELCRO®, VWR BASIC, SPP

VWR Basic SPP frocks are manufactured from a strong, lightweight and breathable spunbonded polypropylene (SPP) fabric, which protects against dirt, grime and certain dry particulates in non hazardous environments.

- Snap collar, Raglan sleeves, Velcro® closure, knitted cuffs, no pockets
- Lightweight and breathable first line barrier protection

This garment is ideal for less critical areas or pre-gowning entry rooms. It is tested and manufactured in an ISO certified facility that is lot-controlled and validated through independent laboratory testing.

Clothing size	Colour	Pk	Cat. No.
S	White	30	113-1988
M	White	30	113-1989
L	White	30	113-1990
XL	White	30	113-1991
XXL	White	30	113-1992



FROCKS, VWR® BASIC

These disposable frocks are manufactured from a strong, lightweight and breathable spunbonded polypropylene (SPP) fabric, which protects against dirt, grime and certain dry particulates in non hazardous environments.

- Press stud fastening
- Elastic wrists
- Raglan sleeves
- Free from natural rubber latex

Weight: 40 g/m²

1 piece per bag, 50 bags per case.

Clothing size	Length (cm)	Colour	Pk	Cat. No.
L	104	White	50	113-8995
XL	108	White	50	113-8996
L	104	Blue	50	113-8998
XL	108	Blue	50	113-8999



FROCKS, ZIP CLOSURE, VWR® BASIC

These disposable frocks are manufactured from a strong, lightweight and breathable spunbonded polypropylene (SPP) fabric, which protects against dirt, grime and certain dry particulates in non hazardous environments.

- Zip closure
- Elastic wrists
- Raglan sleeves
- Free from natural rubber latex

Weight: 40 g/m²

1 piece per bag, 50 bags per case.

Clothing size	Length (cm)	Colour	Pk	Cat. No.
XL	108	White	50	113-9000
XXL	112	White	50	113-9001



FROCKS, VWR® BASIC, SMS

These SMS frocks are manufactured from a latex-free, multilayer spunbonded-meltblown-spunbonded (SMS) fabric that offers high tensile strength while remaining soft, comfortable and breathable.

- Snap collar, Raglan sleeves, snap closure
- Fluid and particulate barrier
- Light chemical splash resistance

Clothing size	Colour	Pk	Cat. No.
S	White	30	113-1156
M	White	30	113-1157
L	White	30	113-1158
XL	White	30	113-1159
XXL	White	30	113-1160
3XL	White	30	113-1161
M	Blue	30	113-1162
L	Blue	30	113-1174
XL	Blue	30	113-1175
XXL	Blue	30	113-1176
3XL	Blue	30	113-1166



FROCKS, VWR® MAXIMUM, SF

VWR Maximum SF frocks are the cleanest and most durable within the entire VWR clothing line. Made from spunbonded polypropylene fabric (SPP) coated with breathable polyethylene film, these garments have been designed to optimise barrier protection, cleanliness and comfort properties.

- Snap collar, Raglan sleeves, snap closure, elasticated cuffs
- Superior fluid and particulate barrier
- Lowest level of particle shedding: Level 1 Helmke drum classification
- Light chemical splash resistance
- Improved breathability to ensure user comfort
- Soft, cloth-like fabric with maximum tear strength

Tested and manufactured in an ISO certified facility under stringent process controls. Lot-controlled and validated through independent laboratory testing.

Clothing size	Colour	Pk	Cat. No.
M	White	25	113-1167
L	White	25	113-1168
XL	White	25	113-1169
XXL	White	25	113-1170
3XL	White	25	113-1171
4XL	White	25	113-1172



FROCKS, VWR® ADVANCED, SF

VWR Advanced SF frocks are manufactured from spunbonded polypropylene fabric (SPP) coated with breathable polyethylene film.

- Snap collar, Raglan sleeves, snap closure, elasticated cuffs
- Durable fabric with good breathability and water transmission rate
- Significant fluid and particulate barrier
- Particle shedding: Level II Helmke drum classification
- Soft, cloth-like fabric

Tested and manufactured in an ISO certified facility under stringent process controls. Lot-controlled and validated through independent laboratory testing.

Clothing size	Colour	Pk	Cat. No.
S	White	25	113-1177
M	White	25	113-1178
L	White	25	113-1179
XL	White	25	113-1180
XXL	White	25	113-1181
3XL	White	25	113-1182
4XL	White	25	113-1183



LABORATORY COATS, SPP, DISPOSABLE, VWR®

This disposable coat is made of non woven laminated SPP fabric.

- Tailored collar
- Press stud closure and open cuffs
- Two pockets

Suitable for use in ISO class 5 + 6 cleanroom environments.

Weight: 45 g/m²

Type 5/6; Cat. III

Clothing size	Colour	Pk	Cat. No.
M	White	50	113-8297
L	White	50	113-8298
XL	White	50	113-8299
XXL	White	50	113-8302
3XL	White	50	113-8303
4XL	White	50	113-8304

LAB COATS, VWR® ADVANCED, SF, DISPOSABLE

VWR Advanced SF lab coats are manufactured from spunbonded polypropylene fabric coated with breathable polyethylene film.

- Tapered collar, inset sleeves, snap closure, elasticated cuffs, three pockets
- Durable fabric with good breathability and water transmission rate
- Significant fluid and particle barrier
- Particle shedding: Level II Helmke drum classification
- Soft, cloth-like fabric

Tested and manufactured in an ISO certified facility under stringent process controls. Lot-controlled and validated through independent laboratory testing.

Clothing size	Colour	Pk	Cat. No.
S	White	25	113-1145
M	White	25	113-1146
L	White	25	113-1147
XL	White	25	113-1148
XXL	White	25	113-1149
3XL	White	25	113-1150



LAB COATS, VWR® BASIC, SMS, DISPOSABLE

SMS lab coats are manufactured from a latex-free, multilayer spunbonded-meltblown-spunbonded (SMS) fabric that offers high tensile strength while remaining soft, comfortable and breathable.

- Tapered collar, inset sleeves, snap closure
- Knitted cuffs, three pockets
- Fluid and particulate barrier
- Light chemical splash resistance

Clothing size	Colour	Pk	Cat. No.
S	White	30	113-1131
M	White	30	113-1132
L	White	30	113-1133
XL	White	30	113-1134
XXL	White	30	113-1135
3XL	White	30	113-1136
4XL	White	30	113-1137
S	Blue	30	113-1125
M	Blue	30	113-1126
L	Blue	30	113-1127
XL	Blue	30	113-1128
XXL	Blue	30	113-1129
3XL	Blue	30	113-1130

**CLEANROOM LAB COATS, VWR® MAXIMUM, SF**

VWR Maximum SF lab coats are the cleanest and most durable within the entire VWR clothing line. Made from spunbonded polypropylene fabric (SPP) coated with breathable polyethylene film, these garments have been designed to optimise barrier protection, cleanliness and comfort properties.

- Tapered collar, inset sleeves, snap closure, elasticated cuffs, three pockets
- Superior fluid and particulate barrier
- Lowest level of particle shedding: Level I Helmke drum classification
- Light chemical splash resistance
- Improved breathability to ensure user comfort
- Soft, cloth-like fabric with maximum tear strength

Tested and manufactured in an ISO certified facility under stringent process controls. Lot-controlled and validated through independent laboratory testing.

Clothing size	Colour	Pk	Cat. No.
S	White	25	113-1138
M	White	25	113-1139
L	White	25	113-1140
XL	White	25	113-1141
XXL	White	25	113-1142
3XL	White	25	113-1143
4XL	White	25	113-1144





OVERALLS, VWR® BASIC

These disposable overalls, with collar, are made of non woven, spunbonded polypropylene (SPP), a lightweight fabric that provides protection in non hazardous, dirty work environments.

- Collar
- Zip closure (one direction)
- Elastic wrists
- Free from natural rubber latex

Weight: 40 g/m²

1 piece per bag, 50 bags per case.

Clothing size	Colour	Pk	Cat. No.
L	White	50	113-9002
XL	White	50	113-9003
XXL	White	50	113-9004
3XL	White	50	113-9005
L	Blue	50	113-9006
XL	Blue	50	113-9007
XXL	Blue	50	113-9008
3XL	Blue	50	113-9009



OVERALLS, WITH HOOD AND ZIP CLOSURE, VWR®

These disposable overalls, with hood, are made of breathable and durable non woven SMS fabric.

- Hood
- Zip closure (one direction)
- Elastic wrists
- Free from natural rubber latex

Weight: 50 g/m²

1 piece per bag, 50 bags per case.

Clothing size	Colour	Pk	Cat. No.
M	White	50	113-9038
L	White	50	113-9039
XL	White	50	113-9040
XXL	White	50	113-9041
3XL	White	50	113-9042
M	Blue	50	113-9043
L	Blue	50	113-9044
XL	Blue	50	113-9045
XXL	Blue	50	113-9046
3XL	Blue	50	113-9047



OVERALLS, DUAL-ZIP CLOSURE, VWR® BASIC

These disposable overalls, with collar, are made of non woven, spunbonded polypropylene (SPP), a lightweight fabric that provides protection in non hazardous, dirty work environments.

- Collar
- Zip closure (dual direction)
- Elastic wrists
- Free from natural rubber latex

Weight: 40 g/m²

1 piece per bag, 50 bags per case.

Clothing size	Colour	Pk	Cat. No.
M	White	50	113-9010
L	White	50	113-9011
XL	White	50	113-9012
XXL	White	50	113-9013



OVERALLS, WITH HOOD, VWR® BASIC

These disposable overalls, with hood, are made from non woven PE-laminated PP fabric.

- Hood
- Zip closure (one direction)
- Elastic wrists
- Free from natural rubber latex

Weight: 40 g/m²

1 piece per bag, 50 bags per case.

Clothing size	Colour	Pk	Cat. No.
S	White	50	113-9026
M	White	50	113-9027
L	White	50	113-9028
XL	White	50	113-9029
XXL	White	50	113-9030
3XL	White	50	113-9031
S	Blue	50	113-9032
M	Blue	50	113-9033
L	Blue	50	113-9034
XL	Blue	50	113-9035
XXL	Blue	50	113-9036
3XL	Blue	50	113-9037



OVERALLS, WITH HOOD, VWR® BASIC

These disposable overalls, with hood, are made of non woven, spunbonded polypropylene (SPP), a lightweight fabric that provides protection in non hazardous, dirty work environments.

- Hood
- Zip closure (one direction)
- Elastic wrists
- Free from natural rubber latex

Weight: 40 g/m²

1 piece per bag, 50 bags per case.

Clothing size	Colour	Pk	Cat. No.
S	White	50	113-9014
M	White	50	113-9015
L	White	50	113-9016
XL	White	50	113-9017
XXL	White	50	113-9018
3XL	White	50	113-9019
S	Blue	50	113-9020
M	Blue	50	113-9021
L	Blue	50	113-9022
XL	Blue	50	113-9023
XXL	Blue	50	113-9024
3XL	Blue	50	113-9025



ESD OVERALLS, WITH HOOD, VWR®

These breathable overalls are made of spunbonded polypropylene (SPP), a lightweight fabric that provides protection in non hazardous, dirty work environments.

- Elasticated hood
- Zip closure
- Elasticated cuffs, ankles and waist
- Anti-static properties

Weight: 50 g/m²

1 piece per bag, 50 bags per case.

Clothing size	Colour	Pk	Cat. No.
M	White	50	113-8305
L	White	50	113-8306
XL	White	50	113-8307
XXL	White	50	113-8308
3XL	White	50	113-8309
4XL	White	50	113-8310



CLEANROOM OVERALLS, VWR® BASIC, SPP

VWR Basic SPP overalls are manufactured from a strong, lightweight and breathable spunbonded polypropylene (SPP) fabric, which protects against dirt, grime and certain dry particulates in non hazardous environments.

- Tapered collar, inset sleeves, zip closure, elasticated cuffs
- Lightweight and breathable first line barrier protection

This garment is ideal for less critical areas or pre-gowning entry rooms.

Tested and manufactured in an ISO certified facility and lot-controlled and validated through independent laboratory testing.

Clothing size	Colour	Pk	Cat. No.
M	White	25	113-1104
L	White	25	113-1105
XL	White	25	113-1106
XXL	White	25	113-1107
3XL	White	25	113-1108
4XL	White	25	113-1109
5XL	White	25	113-1110



Designed for protection

VWR® Lab Safety

- Eyewear
- Footwear
- First aid kits

- Gloves
- Hand cleaning
- Labcoats and apparel

- Respirators
- Spill kits

Discover this VWR Handy Solution Guide on [vwr.com](https://www.vwr.com)



OVERALLS, SMS, VWR®

These durable, anti-static overalls are made of breathable and soft SMS, a spunbonded fabric with a unique trilaminate construction that offers a high tensile strength and toughness plus provides a barrier to fluids and particulates.

- Elasticated hood
- Zip closure with flap
- Elasticated cuffs, ankles and waist, thumb loop
- Serged seams (stitching method)
- Low lint performance

The overalls can be used in medical, industrial, laboratory, electronic and pharmaceutical applications. Suitable for use in Critical Environments (IEST-RP-CC003.3 – Level I) and ISO class 5 + 6 cleanrooms.

Weight: 60 g/m²

EN 340, EN 1149-5, EN 13034+A1 (Type 5), EN 13982-1+A1 (Type 6), EN 1073-2; Cat. III

Clothing size	Colour	Pk	Cat. No.
S	White	50	113-8225
M	White	50	113-8226
L	White	50	113-8227
XL	White	50	113-8228
XXL	White	50	113-8229
3XL	White	50	113-8230



CLEANROOM INNER WEAR, VWR®

This disposable inner wear, made from non woven comfortable SMS, consists of a shirt and a pair of trousers. The set can be used as inner wear suits or work suits. Compatible for use in ISO class 6 cleanroom environments.

- Round neck
- Long sleeves and legs
- Elasticated wrist and ankle
- Latex-free elastic

Weight: 35 g/m²

One set (1 shirt and 1 pair of trousers) packed individually. 50 sets per bag, 2 bags per case, case of 100 sets.

Colour	Clothing size	Pk	Cat. No.
Green	S	100 SET	113-8810
Green	M	100 SET	113-8811
Green	L	100 SET	113-8812
Green	XL	100 SET	113-8813
Green	XXL	100 SET	113-8814
Blue	S	100 SET	113-8815
Blue	M	100 SET	113-8816
Blue	L	100 SET	113-8817
Blue	XL	100 SET	113-8818
Blue	XXL	100 SET	113-8819



CLEANROOM OVERALLS, VWR® BASIC, SMS

These cleanroom overalls are manufactured from a latex-free, multilayer spunbonded-meltblown-spunbonded (SMS) fabric that offers high tensile strength while remaining soft, comfortable and breathable.

- Tapered collar, inset sleeves, zip closure, elasticated cuffs
- Fluid and particulate barrier
- Light chemical splash resistance

Clothing size	Colour	Pk	Cat. No.
M	White	25	113-1097
L	White	25	113-1098
XL	White	25	113-1099
XXL	White	25	113-1101
3XL	White	25	113-1102
4XL	White	25	113-1103
S	Blue	25	113-1090
M	Blue	25	113-1091
L	Blue	25	113-1092
XL	Blue	25	113-1093
XXL	Blue	25	113-1094
3XL	Blue	25	113-1095
4XL	Blue	25	113-1096



CLEANROOM OVERALLS, VWR® ADVANCED, SF

VWR Advanced SF overalls are manufactured from spunbonded polypropylene fabric coated with breathable polyethylene film.

- Available with tapered collar or with hood and attached boot covers
- Inset sleeves, zip closure, elasticated cuffs
- Durable fabric with good breathability and water transmission rate
- Significant fluid and particulate barrier
- Particle shedding: Level II Helmke drum classification
- Soft, cloth-like fabric

Tested and manufactured in an ISO certified facility under stringent process controls. Lot-controlled and validated through independent laboratory testing.

Clothing size	Colour	Pk	Cat. No.
Overalls with collar			
S	White	25	113-1061
M	White	25	113-1062
L	White	25	113-1063
XL	White	25	113-1064
XXL	White	25	113-1065
3XL	White	25	113-1066
4XL	White	25	113-1067
5XL	White	25	113-1068
Hooded overalls with attached fluid-impervious boot covers			
L	White	25	113-1069
XL	White	25	113-1070
XXL	White	25	113-1071
3XL	White	25	113-1072
4XL	White	25	113-1073



CLEANROOM OVERALLS, VWR® MAXIMUM, SF

VWR Maximum SF overalls are the cleanest and most durable within the entire VWR clothing line. Made from spunbonded polypropylene fabric (SPP) coated with breathable polyethylene film, these garments have been designed to optimise barrier protection, cleanliness and comfort properties.

- Available as a standard overall with collar, either elasticated ankles or non slip boot covers, or hooded overall with fluid-impervious boot covers
- Inset sleeves, zip closure, elasticated cuffs
- Superior fluid and particulate barrier
- Lowest level of particle shedding: Level 1 Helmke drum classification
- Light chemical splash resistance
- Improved breathability to ensure user comfort
- Soft, cloth-like fabric with maximum tear strength

Tested and manufactured in an ISO certified facility under stringent process controls. Lot-controlled and validated through independent laboratory testing.

Clothing size	Colour	Pk	Cat. No.
Standard overall with collar			
M	White	25	113-1078
L	White	25	113-1079
XL	White	25	113-1080
XXL	White	25	113-1081
3XL	White	25	113-1082
4XL	White	25	113-1083
5XL	White	25	113-1084
Overall with collar and attached non skid boot covers			
M	White	25	113-1085
L	White	25	113-1086
XL	White	25	113-1087
XXL	White	25	113-1088
3XL	White	25	113-1089
Hooded overall with attached fluid-impervious boot covers			
M	White	25	113-1074
L	White	25	113-1075
XL	White	25	113-1076
XXL	White	25	113-1077



CLEANROOM OVERALLS, VWR®

These sterile single-use overalls are made of breathable SMS fabric. They are ideal for use in cleanroom production and research.

- Hood and two-way closure
- Elasticated wrist, ankles and back for tighter fit and easier donning
- Thumb loops (latex-free)
- Bound seams

Suitable for use in ISO Class 5 + 6 cleanroom environments.

Weight: 60 g

Level I acc. IEST-RP-CC003.3

Type 5/6; Cat. III

Individually double-packed in easy-tear bags. 20 overalls per liner.

Clothing size	Colour	Pk	Cat. No.
S	White	20	113-7881
M	White	20	113-7882
L	White	20	113-7883
XL	White	20	113-7884
XXL	White	20	113-7885
3XL	White	20	113-7886



CHEMICAL RESISTANT CLEANROOM OVERALLS, TYPE 4/5/6, VWR®

Disposable, anti-static overall made of a microporous film with a nylon scrim between film and substrate that gives the material additional strength.

- Hood
- Zip closure with flap
- Elasticated cuffs, ankles and waist
- Seams sealed with dark green tape (liquid proof)
- Anti-static
- Individually packed

This breathable garment provides protection against chemical dusts, paint sprays, asbestos, and other airborne dusts. It can be used in any non hazardous environment where protection against dirt, grime, splashes and spills is required.

Ideal for use in Critical Environments (IEST-RP-CC003.3 – Level I). Suitable for use in ISO Class 7 + 8 cleanroom environments.

Weight: 60 g/m²

Type 4/5/6, EN 340, EN 1149-5, EN 1073-2, EN 14126; Cat. III

Clothing size	Colour	Pk	Cat. No.
S	White	50	113-8231
M	White	50	113-8232
L	White	50	113-8233
XL	White	50	113-8234
XXL	White	50	113-8235
3XL	White	50	113-8236



CLEANROOM GARMENT SETS, VWR®

This single-use garment set includes overall, hood, boot covers and sleeve protectors, all made from breathable SMS fabric.

- Overall with collar, raglan style sleeves, two-way zip fastener and thumb loop (latex-free)
- Overall features bound seams and elasticated wrists, ankles and back for tighter fit and easier donning
- Boot covers with anti-skid PU sole
- Low particle shedding
- Garments are gamma sterilised to SAL 10⁻⁶

These sterile garments are ideal for use in cleanroom production and research. Suitable for use in ISO Class 5 + 6 cleanroom environments.

Weight: 60 g

Length of the sleeve protectors: 43 cm

Length of the boot covers: 42 - 44 cm (depending on size)

Level I acc. IEST-RP-CC003.3

Type 5/6; Cat. III

Individually double-packed in easy-tear bags. 20 complete sets per liner.

Clothing size	Colour	Pk	Cat. No.
S	White	20	113-7875
M	White	20	113-7876
L	White	20	113-7877
XL	White	20	113-7878
XXL	White	20	113-7879
3XL	White	20	113-7880



SLEEVE PROTECTORS, VWR® BASIC

These disposable sleeve protectors are made of PE film.

- Free from natural rubber latex
- Available in different colours

L×W: 400×200 mm

Thickness: 20 or 40 µm

100 pieces per bag, 10 bags per case.

Colour	Length (mm)	Pk	Cat. No.
20 µm			
White	400	1.000	113-9073
Blue	400	1.000	113-9074
Yellow	400	1.000	113-9075
Green	400	1.000	113-9076
Red	400	1.000	113-9077
40 µm			
Blue	400	1.000	113-9078



SLEEVE PROTECTORS, WATERPROOF, VWR®

These disposable sleeve protectors are made of non woven, CPE-laminated, SPP fabric.

- Waterproof
- Free from natural rubber latex

L×W: 400×200 mm

Weight: 48 g/m²

100 pieces per bag, 10 bags per case.

Colour	Length (mm)	Pk	Cat. No.
White	400	1.000	113-9072



CLEANROOM SLEEVE PROTECTORS (BULK), VWR® ADVANCED, SF

VWR Advanced SF sleeve protectors are manufactured from spunbonded polypropylene fabric (SPP) coated with breathable polyethylene film.

- Elasticated cuffs, with sonically-welded seams
- Durable fabric with good breathability and water transmission rate
- Significant fluid and particle barrier
- Particle shedding: Level II Helmke drum classification
- Soft, cloth-like fabric

Tested and manufactured in an ISO certified facility under stringent process controls. Lot-controlled and validated through independent laboratory testing.

Colour	Length (mm)	Pk	Cat. No.
White	495	300	113-1194
White	546	300	113-1193



CLEANROOM SLEEVE PROTECTORS, VWR®

Tapered sleeve protectors made from breathable SMS. Ideal for use in cleanroom and ESD environments.

- Elastic at both ends
- Folding seams
- Vacuum packed

Weight: 60 g

Level I acc. IEST-RP-CC03.3. Suitable for use in ISO class 5 + 6 cleanroom environments.

Type 5/6; Cat. III

Individually double-bagged with lining.

Colour	Length (mm)	Pk	Cat. No.
White	430	150 PAIR	113-7887



SHOE COVERS, ANTI-SKID, VWR® BASIC

These disposable shoe covers are made from non woven laminated PP fabric.

- Anti-skid sole
- Free from natural rubber latex
- Available in white and blue

L×H: 410×170 mm

Weight: 60 g/m²

* One size fits all

Cat. I

10 pieces per bundle, 10 bundles per bag, 3 bags per case.

Size	Colour	Pk	Cat. No.
U*	Blue	300	113-8285
U*	White	300	113-8287



SHOE COVERS, VWR® BASIC

These disposable shoe covers are made of CPE film.

- Free from natural rubber latex
- Available in different colours

L×W: 410×170 mm

Thickness: 25, 40 or 70 µm

* One size fits all

10 pieces per bundle, 10 bundles per bag, 10 bags per case.

Description	Size	Colour	Pk	Cat. No.
25 µm	U*	Blue	1.000	113-9083
40 µm	U*	Blue	1.000	113-9084
40 µm	U*	Yellow	1.000	113-9085
40 µm	U*	Green	1.000	113-9086
40 µm	U*	Red	1.000	113-9087
40 µm	U*	White	1.000	113-9088
70 µm	U*	Blue	1.000	113-9090
70 µm	U*	Green	1.000	113-9091
70 µm	U*	White	1.000	113-9089



SHOE COVERS, ANTI-SLIP, VWR®

These disposable shoe covers are made of CPE film.

- Free from natural rubber latex
- Anti-slip performance

L×W: 410×170 mm

Weight: 10, 13 or 16 g/pcs

* One size fits all

Cat. I

Description	Size	Colour	Pk	Cat. No.
10 g/pcs	U*	White	500	113-9082
13 g/pcs	U*	Blue	500	113-9081
13 g/pcs	U*	White	500	113-9080
16 g/pcs	U*	Blue	500	113-9079



SHOE COVERS, SPP/CPE, VWR®

These disposable shoe covers are made from a non woven SPP fabric with a CPE laminated sole.

- No seam under the foot
- Different coloured sole (white, blue or black)

L×H: 410×170 mm

Weight: 40 g/m² (SPP), 80 g/m² (CPE sole)

*One size fits all

5 pieces per bundle, 10 bundles per bag, 4 bags per case.

Size	Colour	Pk	Cat. No.
U*	White/white	200	113-8282
U*	White/blue	200	113-8283
U*	White/black	200	113-9052



SHOE COVERS, SPP, VWR® BASIC

These disposable shoe covers are made from a non woven SPP fabric.

- Free from natural rubber latex
- Available with anti-skid sole

LxH: 410x170 mm

Weight: 40 g/m²

* One size fits all

10 pieces per bundle, 10 bundles per bag, 3 bags per case.

Description	Size	Colour	Pk	Cat. No.
Standard	U*	White	300	113-8929
Standard	U*	Blue	300	113-8932
Anti-skid	U*	Blue	300	113-9053



SHOE COVERS, NON SKID, VWR® ADVANCED, SF

VWR Advanced SF shoe covers are manufactured from spunbonded polypropylene fabric (SPP) coated with breathable polyethylene film.

- High coefficient of friction to provide excellent traction
- Water resistant
- Durable fabric with good breathability
- Significant fluid and particulate barrier
- Particle shedding: Level II Helmke drum classification
- Soft, cloth-like fabric

Tested and manufactured in an ISO certified facility under stringent process controls. Lot-controlled and validated through independent laboratory testing.

Length: 394 mm (U*), 432 mm (XL), 470 mm (XXL)

*One size fits all

Description	Size	Colour	Pk	Cat. No.
Static dissipative	U*	Blue	300	113-1377
Static dissipative	XL	Blue	300	113-1378
Standard	U*	Blue	300	113-1382
Standard	XL	Blue	300	113-1383
Standard	XXL	Blue	300	113-1384



SHOE COVERS, NON SKID, VWR® MAXIMUM, SF

VWR Maximum SF shoe covers are the cleanest and most durable within the entire VWR clothing line. Made from spunbonded polypropylene fabric (SPP) coated with breathable polyethylene film, these garments have been designed to optimise barrier protection, cleanliness and comfort properties.

- Non skid and anti-static
- Impervious to fluids
- Superior coefficient of friction to ensure maximum traction
- Maximum skid resistance on wet and smooth surfaces
- Clean, low linting fabric

Tested and manufactured in an ISO certified facility under stringent process controls. Lot-controlled and validated through independent laboratory testing.

Length: 359 mm (U*), 292 mm (M), 324 mm (L), 381 mm (XL)

*One size fits all

Size	Colour	Pk	Cat. No.
M	White	200	113-1371
L	White	200	113-1372
XL	White	200	113-1370
U*	White	200	113-1369
M	Blue	200	113-1375
L	Blue	200	113-1376
XL	Blue	200	113-1374
U*	Blue	200	113-1373



SHOE COVERS, FLUID IMPERVIOUS, BUTTERFLY-STYLE, VWR® MAXIMUM, SF

VWR Maximum SF shoe covers are the cleanest and most durable within the entire VWR clothing line. Made from spunbonded polypropylene fabric (SPP) with breathable polyethylene film coating, these garments have been designed to optimise barrier protection, cleanliness and comfort properties.

- Non skid
- Fluid and particle impervious, sealed seams to repel water
- Superior friction coefficient to ensure maximum traction
- Maximum skid resistance on wet and smooth surfaces
- Clean, low linting fabric

Tested and manufactured in an ISO certified facility under stringent process controls. Lot-controlled and validated through independent laboratory testing.

Length: 394 mm (U*), 432 mm (XL), 483 mm (XXL)

*One size fits all

Size	Colour	Pk	Cat. No.
XL	Blue	150	113-1367
XXL	Blue	150	113-1368
U*	Blue	150	113-1366
XL	White	150	113-1380
XXL	White	150	113-1381
U*	White	150	113-1379



BOOT COVERS, NON SKID, VWR® MAXIMUM, SF

VWR Maximum SF boot covers are the cleanest and most durable within the entire VWR clothing line. Made from spunbonded polypropylene fabric (SPP) coated with breathable polyethylene film, these garments have been designed to optimise barrier protection, cleanliness and comfort properties.

- Non skid
- Impervious material
- Superior coefficient of friction to ensure maximum traction
- Maximum skid resistance on wet and smooth surfaces
- Clean, low linting fabric

Tested and manufactured in an ISO certified facility under stringent process controls. Lot-controlled and validated through independent laboratory testing.

Length: 286 mm (M), 356 mm (U*), 381 mm (XL)

*One size fits all

Description	Size	Colour	Pk	Cat. No.
Without ankle ties	M	White	100 PAIR	113-1187
Without ankle ties	L	White	100 PAIR	113-1188
Without ankle ties	XL	White	100 PAIR	113-1189
With ankle ties	M	White	100 PAIR	113-1192
With ankle ties	U*	White	100 PAIR	113-1190
With ankle ties	XL	White	100 PAIR	113-1191



BOOT COVERS, FLUID IMPERVIOUS, VWR® MAXIMUM, SF

VWR Maximum SF boot covers are the cleanest and most durable within the entire VWR clothing line. Made from spunbonded polypropylene fabric (SPP) with breathable polyethylene film coating, these garments have been designed to optimise barrier protection, cleanliness and comfort properties.

- Non skid and anti-static
- Fluid impervious, sealed seams to repel water
- Superior friction coefficient to ensure maximum traction
- Maximum skid resistance on wet and smooth surfaces

Tested and manufactured in an ISO certified facility under stringent process controls. Lot-controlled and validated through independent laboratory testing.

Length: 381 mm (U*), 419 mm (XL), 470 mm (XXL)

*One size fits all

Size	Colour	Pk	Cat. No.
XL	Blue	100 PAIR	113-1184
XXL	Black	100 PAIR	113-1185
U*	White	100 PAIR	113-1186



HYGIENE MASKS, 2 PLY NON WOVEN PP, VWR®

This hygiene mask, with nose bridge, is made from 2 ply, non woven PP.

- Latex-free
- Available with ear loops or ties

Density: 20 g/m² (front layer); 25 g/m² (back layer)

Type	Colour	Pk	Cat. No.
With ear loops	White	50	113-0713
With ties	Green	50	113-0715



HYGIENE MASKS, 3 PLY NON WOVEN PP, VWR®

Hygiene masks made from 3 ply, non woven PP featuring a nose bridge and ear loops or ties.

- Latex-free
- Bacterial filtration efficiency: 90%
- Particle filtration efficiency: 98,5%
- Particle size: 0,1 µm

Density: 20 g/m² (front layer); 25 g/m² (back layer); 20 g/m² (centre)

Type	Colour	Pk	Cat. No.
With ear loops	Green	50	113-0714
With ear loops	Blue	50	113-0716
With earloops	White	1.000	113-8927
With ties	White	1.000	113-8928



CLEANROOM FACE MASKS, MAXIMUM

Maximum cleanroom masks feature 3 ply construction for superior particle and bacterial filtration efficiency. These masks are latex-free.

- 3 ply masks provide high bacterial and particle filtration efficiency
- Highly breathable and fluid resistant
- A full length plastic arch holds the fabric away from the wearer's mouth to allow cooler, more comfortable breathing
- Malleable noseband ensures a custom, secure seal
- Available with spandex ear loops or PP ties, ultrasonically welded to maintain softness and guard against particulates
- Moisture resistant, sterile mask features a unique, lightweight inner layer of film for enhanced moisture resistance

Particle shedding (particles: ≥0,5 µm/cu. ft.): 196 (IEST-RP-CC003.3)

Bacterial filtration efficiency: >99 % (ASTM F2101)

Particle filtration efficiency: > 99% (ASTM F2299)

Delta P breathability (mm H₂O/cm²): 1.9 to 2.2 (MIL-M-36954C)

Rigorously tested and manufactured in an ISO certified facility; products are validated through independent laboratory testing.

50 masks per cleanroom compatible, heat-sealed bag; 10 bags per case.

Type	Size (mm)	Colour	Pk	Cat. No.
Non sterile, with ear loops	175x95	Blue	500	113-6220
Non sterile, with ties	175x95	White	500	113-6221
Sterile, with ear loops	175x95	White	500	113-6222



CLEANROOM FACE MASKS, DUCK BILL, VWR

Cleanroom duck bill face masks feature superior particle and bacterial filtration efficiency and low particle shedding. The moisture resistant cleanroom masks consist of three layers featuring a unique, lightweight inner layer of film for enhanced moisture resistance.

- Available as sterile or non sterile, with ear loops, ties or hood loops
- High bacterial and particle filtration efficiency
- Full length plastic arch within the layers holds the fabric away from the mouth to allow cooler, more comfortable breathing without restricting downward vision
- 12 cm malleable steel noseband ensures a custom, secure seal
- Natural rubber latex-free, glass fibre and silicon-free

Outer layer: 28 g/m² non woven PP

Filter media: 25 g/m² melt-blown PP

Inner layer: 25 g/m² non woven PP

ISO certified validated through independent lab testing.

20 masks per cleanroom-compatible, heat-sealed bag, 10 bags per liner bag per case. Sterile masks are individually packed.

Type	Colour	Pk	Cat. No.
With hood loop, sterile	White	200	113-8681
With ear loop, sterile	White	200	113-8682
With ties, sterile	White	200	113-8683
With hood loop	White	200	113-8684
With ear loop	White	200	113-8685
With ties	White	200	113-8686



CLEANROOM GOGGLES, AUTOCLAVABLE

Lightweight cleanroom goggles.

- Soft, thermoplastic body with toughened polycarbonate lens
- Strap with polypropylene strap hooks
- Indirect base ventilation
- Autoclavable at 121 °C

Suitable for ISO Class 4 environments.

EN 166:2001; Optical Class 1

Packed in a NEBB Certified ISO Class 4 (Class 10) cleanroom. One piece per PE bag.

Type	Lenses	Colour	Pk	Cat. No.
Anti-scratch	Clear PC	Blue	1	111-0614

Description	Pk	Cat. No.
Accessories		
Replacement lens for autoclavable cleanroom goggles	10	111-0599



CLEANROOM DISPOSABLE GOGGLES

Sterile cleanroom goggles with a lightweight frame, indirect ventilation, and a non linting latex-free headband.

- Toughened PC lens with anti-fog and anti-scratch coating
- Lightweight PVC frame with silicone rubber strap provide comfort
- Ethylene oxide (EtO) sterilised and fully validated to ISO 11135-1-2007

Recommended for ISO class 4 and EU GMP Grade A/B critical environments.

EN 166:2001, optical class 1

In a Nextech certified ISO 4 class for cleanroom. One piece per Tyvek™ PE bag.

Type	Lenses	Colour	Pk	Cat. No.
Cleanroom, sterile, anti-fog, anti-scratch	Clear PC	Transparent	10	111-0615



GLOVE LINERS

These durable and reusable glove liners are made from 100% nylon. They are compatible with stringent cleanroom requirements and can be used effectively as a gowning glove. Low linting.

- Reduces perspiration and wicks moisture during extended use
- Prevents skin irritation without diminishing tactile sensitivity
- Limits wear and tear to extend life of gloves and conserve resources
- Pre-laundered, will not shrink during washing

Basic weight: 21,5 g/pair ±10%

Thickness: 2 mm ±10%

Surface resistivity: $1 \times 10^9 \pm 10\%$ ohms/m²

Ambidextrous/hand-specific	Hand-specific
Disposable/reusable	Reusable
Cuff style	Knit wrist

Model	Glove size	Colour	Packed	Pk	Cat. No.
Full-finger liners	S	Green	20 pairs/bag	20 PAIR	112-1900
Full-finger liners	M	Orange	20 pairs/bag	20 PAIR	112-1899
Full-finger liners	L	Blue	20 pairs/bag	20 PAIR	112-1898
Full-finger liners	XL	Red	20 pairs/bag	20 PAIR	112-1904
Half-finger liners	S	Green	20 pairs/bag	20 PAIR	112-1915
Half-finger liners	M	Orange	20 pairs/bag	20 PAIR	112-1910
Half-finger liners	L	Blue	20 pairs/bag	20 PAIR	112-1905
Half-finger liners	XL	Red	20 pairs/bag	20 PAIR	112-1917



CLEANROOM GLOVES, NITRILE

VWR cleanroom nitrile gloves are manufactured from a synthetic copolymer of acrylonitrile, butadiene and methylacrylic acid, and provide reliable, durable and comfortable hand protection during demanding cleanroom applications. The ambidextrous gloves exhibit high tensile strength and strong permeation resistance against a wide variety of solvents, acids and bases.

- Yield exceptionally low particle counts
- Textured fingers enhance grip on components
- Tapered, beaded cuff provides secure fit
- Static-dissipative to inhibit harmful static discharge
- Contain no natural rubber latex
- Silicone-free material minimises ionic contaminants and Non Volatile Residue (NVR) transfer
- Non staining, non smudging: Reduce the risk of contamination to parts or components being handled by the user, even during prolonged wear

Suitable for use in Class 10, ISO 4, M2.5 or higher cleanrooms.

Quality tested according to ASTM, FTMS and IEST Standards.

EN 374-2/3; Cat. III; AQL 1,5

100 gloves per double bag, 10 bags per case. Gloves are double-bagged in sealed polyethylene cleanroom bags. Each carton is double-walled. IPA resistant ink is used on bags and carton labels.

Ambidextrous/hand-specific	Ambidextrous
Disposable/reusable	Disposable
Latex/latex-free	Latex-free
Powdered/powder-free	Powder-free
Cleanroom class	10/ISO 4
Finish	Textured fingertips
Cuff style	Beaded
Cuff thickness	0,08 - 0,12 mm
Finger thickness	0,12 - 0,18 mm
Palm thickness	0,10 - 0,15 mm
EN norm	EN 374-2/3
Tensile strength	≥18 MPa
Ultimate elongation	≥500%

Glove size	Colour	Length (mm)	Packed	Pk	Cat. No.
XS	White	300 - 310	100/bag, 10 bags/case	1.000	112-4543
S	White	300 - 310	100/bag, 10 bags/case	1.000	112-4544
M	White	300 - 310	100/bag, 10 bags/case	1.000	112-4545
L	White	300 - 310	100/bag, 10 bags/case	1.000	112-4546
XL	White	300 - 310	100/bag, 10 bags/case	1.000	112-4547
XXL	White	300 - 310	100/bag, 10 bags/case	1.000	112-4548

CLEANROOM GLOVES, NITRILE, STERILE, GRADE A

VWR cleanroom nitrile gloves are manufactured from a synthetic copolymer of acrylonitrile, butadiene and methylacrylic acid, and provide reliable, durable and comfortable hand protection during demanding cleanroom applications. These hand-specific gloves exhibit high tensile strength and strong permeation resistance against a wide variety of solvents, acids and bases.

- Yield exceptionally low particle counts; Grade A; Endotoxin <20 EU/glove
- Micro textured surface for enhanced grip on components
- Tapered, beaded cuff provides secure fit
- Static-dissipative to inhibit harmful static discharge
- Sterilisation by gamma irradiation to SAL 10⁻⁶
- Contain no natural rubber latex
- Silicone-free material minimises ionic contaminants and Non Volatile Residue (NVR) transfer
- Non staining, non smudging: Reduce the risk of contamination to parts or components being handled by the user, even during prolonged wear

Suitable for use in Class 100, ISO 5, M3.5 or higher cleanrooms.

Quality tested according to ASTM, FTMS and IEST Standards.

EN 374-2/3; Cat. III; AQL 1,5

1 pair per pack, 10 packs per intermediate bag, 5 intermediate bags per master bag, 4 master bags per case. Gloves are double-bagged in sealed polyethylene cleanroom bags. Each carton is double-walled. IPA resistant ink is used on bags and carton labels.



Model	Grade A
Ambidextrous/hand-specific	Hand-specific
Disposable/reusable	Disposable
Latex/latex-free	Latex-free
Powdered/powder-free	Powder-free
Cleanroom class	100/ISO 5; EU GMP (A)
Finish	Textured
Cuff style	Beaded
Cuff thickness	0,08 - 0,12 mm
Finger thickness	0,12 - 0,18 mm
Palm thickness	0,10 - 0,15 mm
EN norm	EN 374-2/3
Tensile strength	≥18 MPa
Ultimate elongation	≥500%

Glove size	Colour	Length (mm)	Packed	Pk	Cat. No.
6	White	300 - 310	Individually	200 PAIR	112-4549
6,5	White	300 - 310	Individually	200 PAIR	112-4550
7	White	300 - 310	Individually	200 PAIR	112-4551
7,5	White	300 - 310	Individually	200 PAIR	112-4552
8	White	300 - 310	Individually	200 PAIR	112-4553
8,5	White	300 - 310	Individually	200 PAIR	112-4554
9	White	300 - 310	Individually	200 PAIR	112-4555

CLEANROOM GLOVES, SOFT NITRILE, NON STERILE, ISO 4

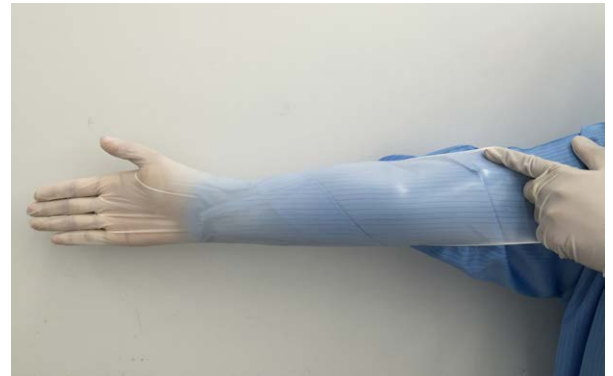
VWR cleanroom soft nitrile gloves are manufactured from carboxylated acrylonitrile butadiene and provide reliable, durable and comfortable hand protection during demanding cleanroom applications.

- Ambidextrous, textured finger and beaded cuff
- Not made from natural rubber latex
- Static-dissipative
- Single-use only
- New and unique formulation to prevent or minimize Type IV allergy or dermatitis potential caused by the use of sulphur and most accelerators in conventional formulation
- High elongation and softer feel for extra comfort during donning to minimize finger fatigue when in use

Recommended for ISO Class 4 (FED-STD-209E Class 10) or higher cleanrooms.

EN ISO 374-5:2016; EN ISO 374-1:2016; ASTM D412; ASTM D257, ESD S11.11; FTMS 101C-4046; IEST-RP-CC005.4; Cat. III; AQL 1,5

100 gloves per double bag, 10 bags per case. Gloves are double-bagged in sealed polyethylene cleanroom bags. Each carton is double-walled. IPA resistant ink is used on bags and carton labels.



Ambidextrous/hand-specific	Ambidextrous
Disposable/reusable	Disposable
Latex/latex-free	Latex-free
Powdered/powder-free	Powder-free
Cleanroom class	10/ISO 4
Cuff style	Beaded
Cuff thickness	0,08 - 0,12 mm
Finger thickness	0,12 - 0,18 mm
Palm thickness	0,10 - 0,15 mm
EN norm	EN ISO 374-5:2016, EN ISO 374-1:2016
Tensile strength	> 18 MPa
Ultimate elongation	> 550%

Glove size	Colour	Length (mm)	Packed	Pk	Cat. No.
XS	Natural	300 - 310	100/bag, 10 bags/case	1.000	112-5145
S	Natural	300 - 310	100/bag, 10 bags/case	1.000	112-5146
M	Natural	300 - 310	100/bag, 10 bags/case	1.000	112-5147
L	Natural	300 - 310	100/bag, 10 bags/case	1.000	112-5148
XL	Natural	300 - 310	100/bag, 10 bags/case	1.000	112-5149
XXL	Natural	300 - 310	100/bag, 10 bags/case	1.000	112-5150



Designed for protection

VWR® solutions for
safe production of
cytotoxic drugs

A SPECIAL RESPONSIBILITY FOR PRODUCT, EMPLOYEE AND PATIENT

Please visit
vwr.com if you
have specific
needs for product
and services.

PB18014-EN

CLEANROOM GLOVES, NITRILE, NON STERILE, ISO 4, 400 MM

VWR cleanroom soft nitrile gloves are manufactured from carboxylated acrylonitrile butadiene and provide reliable, durable and comfortable hand protection during demanding cleanroom applications.

- Designed for elbow length protection
- Ambidextrous, designed with micro textured on fingers and palm, beaded cuff
- Not made from natural rubber latex
- Static-dissipative
- Single-use only

Recommended for ISO Class 4 (FED-STD-209E Class 10) or higher cleanrooms.

EN374-3 :2003; ASTM D412; ASTM D257, ESD S11.11; ASTM D5151; FTMS 101C-4046; WI-QA/15-60; IEST-RP-CC005.4; AQL 1,5

100 gloves per double bag, 10 bags per case. Gloves are double-bagged in sealed polyethylene cleanroom bags. Each carton is double-walled. IPA resistant ink is used on bags and carton labels.



Ambidextrous/hand-specific	Ambidextrous
Disposable/reusable	Disposable
Latex/latex-free	Latex-free
Powdered/powder-free	Powder-free
Cleanroom class	10/ISO 4
Cuff style	Beaded
Cuff thickness	0,08 - 0,12 mm
Finger thickness	0,12 - 0,18 mm
Palm thickness	0,10 - 0,15 mm
EN norm	EN 374-3:2003
Tensile strength	> 18 MPa
Ultimate elongation	500%

Glove size	Colour	Length	Packed	Pk	Cat. No.
XS	White	400 mm (± 5 mm)	100/bag, 10 bags/case	1.000	112-5119
S	White	400 mm (± 5 mm)	100/bag, 10 bags/case	1.000	112-5120
M	White	400 mm (± 5 mm)	100/bag, 10 bags/case	1.000	112-5121
L	White	400 mm (± 5 mm)	100/bag, 10 bags/case	1.000	112-5122
XL	White	400 mm (± 5 mm)	100/bag, 10 bags/case	1.000	112-5123
XXL	White	400 mm (± 5 mm)	100/bag, 10 bags/case	1.000	112-5124



Designed for protection

VWR® Lab Safety

- Eyewear
- Footwear
- First aid kits
- Gloves
- Hand cleaning
- Labcoats and apparel
- Respirators
- Spill kits

Discover this
VWR Handy
Solution Guide
on [vwr.com](https://www.vwr.com)

PB18003-EN

CLEANROOM GLOVES, NITRILE, STERILE, GRADE A, 400 MM

VWR cleanroom soft nitrile gloves are manufactured from carboxylated acrylonitrile butadiene and provide reliable, durable and comfortable hand protection during demanding cleanroom applications.

- Designed for elbow length protection
- Ambidextrous, designed with micro textured on fingers and palm, beaded cuff
- Not made from natural rubber latex
- Static-dissipative
- Single-use only

Recommended for ISO Class 5 (FED-STD-209E Class 100) or higher cleanrooms.

EN374-3 :2003; ASTM D412; ASTM D257, ESD S11.11; ASTM D5151; FTMS 101C-4046; WI-QA/15-60; IEST-RP-CC005.4; AQL 1,5

Gloves are packaged 1pair/pk, 10pk/intermediate bag, 5 intermediate bag/master bag, 4 master bag/case, for a total of 200 pairs.



Ambidextrous/hand-specific	Ambidextrous
Disposable/reusable	Disposable
Latex/latex-free	Latex-free
Powdered/powder-free	Powder-free
Cleanroom class	100/ISO 5
Cuff style	Beaded
Cuff thickness	0,08 - 0,12 mm
Finger thickness	0,12 - 0,18 mm
Palm thickness	0,10 - 0,15 mm
EN norm	EN 374-3:2003
Tensile strength	> 18 MPa
Ultimate elongation	500%

Glove size	Colour	Length	Packed	Pk	Cat. No.
XS	Natural	400 mm (± 5 mm)	1 pair/pk, 10 pks/int. bag, 5 int. bags/master bag, 4 master bags/case	200 PAIR	112-5125
S	Natural	400 mm (± 5 mm)	1 pair/pk, 10 pks/int. bag, 5 int. bags/master bag, 4 master bags/case	200 PAIR	112-5126
M	Natural	400 mm (± 5 mm)	1 pair/pk, 10 pks/int. bag, 5 int. bags/master bag, 4 master bags/case	200 PAIR	112-5127
L	Natural	400 mm (± 5 mm)	1 pair/pk, 10 pks/int. bag, 5 int. bags/master bag, 4 master bags/case	200 PAIR	112-5128
XL	Natural	400 mm (± 5 mm)	1 pair/pk, 10 pks/int. bag, 5 int. bags/master bag, 4 master bags/case	200 PAIR	112-5129
XXL	Natural	400 mm (± 5 mm)	1 pair/pk, 10 pks/int. bag, 5 int. bags/master bag, 4 master bags/case	200 PAIR	112-5130

OCCUPATIONAL SHOES, CLOGS, TOP CLOG, AUTOCLAVABLE

Anti-static clogs made from thermoplastic material with a wide fitting, comfortable shape and a slip resistant sole. Machine washable at 90 °C; autoclavable at 135 °C.

- Resistant to high temperatures
- Energy absorption heel
- Side perforations for ventilation
- Antibacterial, anti-vibration injected insole
- Attached pivoting heel strap

Colour: White, black, green, blue

EN ISO 20347; OB, A, E, SRB

Shoe size	Colour	Pk	Cat. No.
White			
34/35	White	1 PAIR	114-5000
36/37	White	1 PAIR	114-5001
38/39	White	1 PAIR	114-5002
40/41	White	1 PAIR	114-5003
42/43	White	1 PAIR	114-5004
44/45	White	1 PAIR	114-5005
46/47	White	1 PAIR	114-5006
Black			
34/35	Black	1 PAIR	114-5007
36/37	Black	1 PAIR	114-5008
38/39	Black	1 PAIR	114-5009
40/41	Black	1 PAIR	114-5010
42/43	Black	1 PAIR	114-5011
44/45	Black	1 PAIR	114-5012
46/47	Black	1 PAIR	114-5013
Green			
34/35	Green	1 PAIR	114-5014
36/37	Green	1 PAIR	114-5015
38/39	Green	1 PAIR	114-5016
40/41	Green	1 PAIR	114-5017
42/43	Green	1 PAIR	114-5018
44/45	Green	1 PAIR	114-5019
46/47	Green	1 PAIR	114-5020
Blue			
34/35	Blue	1 PAIR	114-5021
36/37	Blue	1 PAIR	114-5022
38/39	Blue	1 PAIR	114-5023
40/41	Blue	1 PAIR	114-5024
42/43	Blue	1 PAIR	114-5025
44/45	Blue	1 PAIR	114-5026
46/47	Blue	1 PAIR	114-5027



GLOVE BOX HOLDERS

Epoxy coated steel wire racks.

- Available as a single box or three-box holder
- Can hold most major brands of boxed gloves
- Easy mounting on the wall

Screws are included.

Description	W×D×H (mm)	Pk	Cat. No.
Glove box holder	140×108×208	1	211-0343
Glove boxes (3) holder	250×108×454	1	211-0344



GLOVE BOX HOLDER

Glove box holder in durable resin to resist to harsh cleaning solutions.

- Wall-mountable design for easy use
- Modular design for horizontal stacking of multiple boxes
- Universal fit for many of the major brands

Suitable for use in labs, cleanrooms, hospitals and microbiological working areas.

Mounting screws included.

Description	W×D×H (mm)	Colour	Pk	Cat. No.
Glove boxes holder	254×156×97	White	3	611-3119



GLOVE BOX HOLDERS

Holders made from tough, clear acrylic. You can clearly see the size and material of the gloves within.

- Can hold one, two or three glove boxes
- Polyester foam insert for a secure storage
- Strong, attractive, scratch resistant material

Wall-mount screws included.

Description	W×D×H (mm)	Colour	Pk	Cat. No.
Glove box holder, 1 box	141×110×260	Clear	1	113-8041
Glove boxes holder, 2 boxes	295×110×260	Clear	1	113-8042
Glove boxes holder, 3 boxes	295×110×385	Clear	1	113-8043





WALL MOUNT FOR FOUR GLOVE OR CLOTHING BOXES

The adjustable holding points provide true flexibility to hold up to four different boxed protective products and other lab essentials. Ideal for different boxed sizes of gloves, face masks, ear plugs or shoe covers.

- Four holding positions can hold up to four boxes in one holder
- Wall-or door-mountable, mounting parts included
- No restrictions regarding box size: Open ended holding points are able to hold longer and wider boxes
- Easy to clean, with low profile

Type	LxW (mm)	Colour	Pk	Cat. No.
Wall holder, adjustable, up to 4 positions	762x152	White	1	113-8040



GLOVE BOX HOLDERS, MICROBAN®

These wall-mountable glove box holders are made from polystyrene with Microban® additive.

- Microban® additive to prevent growth of moulds and bacteria
- High impact polystyrene, resistant to harsh cleaning solutions
- Modular design allows stacking to save space

Suitable for use in labs, cleanrooms, hospitals and microbiological work areas.

Mounting screws included.

Description	WxDxH (mm)	Colour	Pk	Cat. No.
Glove box holder, Microban®	254x156x97	Blue	3	211-0371



DISPENSER FOR SOFT COVERS

Translucent acrylic dispensers provide easy access to soft covers like bouffant caps, beard covers and shoe covers.

- Ergonomically angled for easy dispensing
- Hinged lid protects items from dust and debris
- Set on counter or wall mount (screws included)
- Cut-out opening for easy product removal

Description	WxDxH (mm)	Colour	Pk	Cat. No.
Dispenser for soft covers	227x162x156	Clear	1	113-8689



DISPENSER FOR SAFETY GLASSES

Translucent acrylic dispensers provide easy access to safety accessories.

- Ergonomically angled for easy dispensing
- Hinged lid protects glasses from dust and debris
- Set on counter or wall mount (screws included)
- Large dispenser holds approx. 20 glasses, small dispenser approx. 10

Description	WxDxH (mm)	Colour	Pk	Cat. No.
Dispenser for safety glasses, small, holds up to 10 glasses	227x162x156	Translucent blue	1	111-2278
Dispenser for safety glasses, large, holds up to 20 glasses	203x203x406	Translucent blue	1	113-8687



DISPENSER FOR EARPLUGS

Translucent acrylic dispensers provide easy access to safety accessories.

- Ergonomically angled for easy dispensing
- Hinged lid protects items from dust and debris
- Set on counter or wall mount (screws included)
- Holds approx. 200 earplugs

Description	WxDxH (mm)	Colour	Pk	Cat. No.
Dispenser for earplugs	227x162x156	Transparent	1	113-8688



WORKSTATION DISPENSER, 3 COMPARTMENTS

Three-compartment dispenser can be used to organise safety glasses, earplugs, soft covers (including bouffant caps, beard covers and shoe covers), or any small items that need to be kept within reach.

- Three separate lift-up lids
- Middle compartment has reach-in hole for dispensing soft covers
- Durable acrylic is see-through so product levels are always visible
- Set on counter or wall mount (screws included)

For labs, hospitals, doctor's offices, veterinarian offices, dentist offices, etc.

Description	WxDxH (mm)	Pk	Cat. No.
Dispenser, 3 compartments	406x406x203	1	216-2001



WORKSTATION DISPENSERS

Crystal-clear bins for small items inventory, like pipette tips, tubes, fittings, finger cots and other bulk small items.

- Flip-top covers on generous openings make filling and dispensing easy and keep products dust-free
- 4 sizes available to cater to a wide variety of storage needs
- Includes non skid rubber feet

Description	WxDxH (mm)	Pk	Cat. No.
Workstation dispensing bin, 1 compartment	180x175x235	1	216-2002
Workstation dispensing bin, 2 compartments	139x160x368	1	216-2003
Workstation dispensing bin, 3 compartments	210x155x212	1	216-2004
Workstation dispensing bin, 4 compartments	278x158x217	1	216-2005



WORKSTATION DISPENSERS

The acrylic combination accessory dispenser holds the most commonly used laboratory disposables in one central location. Dispenser stores tubes, tips, gloves, Kimwipes® and Parafilm®.

- Two compartments with hinged lid
- One compartment for wipe box and one compartment for tape
- One large compartment for glove or wipe box

Description	WxDxH (mm)	Colour	Pk	Cat. No.
Workstation dispenser	265x137x440	Clear	1	216-2006

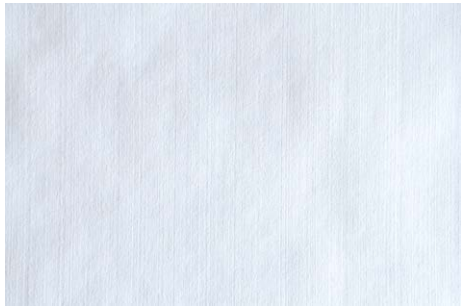


Designed for protection

VWR® solutions for
safe production of
cytotoxic drugs

A SPECIAL RESPONSIBILITY FOR PRODUCT, EMPLOYEE AND PATIENT

Please visit
vwr.com if you
have specific
needs for product
and services.



INDUSTRIAL WIPES, CLEAN SMOOTH, WHITE

These bleached spunlace wipes, made from 55% wood pulp and 45% polyester, are extremely strong, even when wet.

- Low fibre and particle release
- Resistant to acids, solvents and chlorine
- Good absorption
- Do not contain any binders, silicone-free
- Recyclable
- Food contact certified

Typical applications include: Pharma, aerospace, semiconductor, food and beverage, automotive, laboratories, printing and healthcare.

Basis weight: 68 g/m²

Absorption: 400%

Description	Colour	LxW (mm)	Packed	Pk	Cat. No.
Industrial roll (500 wipes)	White	380x300	2 rolls, 500 wipes each	2 Roll	115-2394
Z-folded	White	380x300	10 packs, 50 wipes each	500	115-2395



INDUSTRIAL WIPES, CLEAN SMOOTH, TURQUOISE

These spunlace wipes, made from 55% wood pulp and 45% polyester, are extremely strong, even when wet.

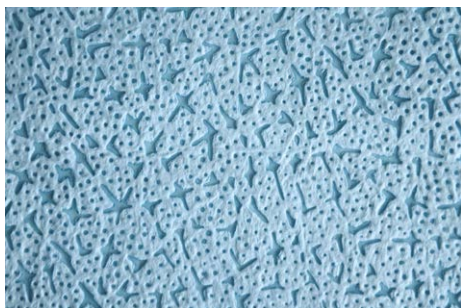
- Low fibre and particle release
- Resistant to acids and solvents
- Good absorption
- Do not contain any binders, silicone-free
- Recyclable
- Food contact certified

Typical applications include: Pharma, aerospace, semiconductor, food and beverage, automotive, laboratories, printing and healthcare.

Basis weight: 73 g/m²

Absorption: 600%

Description	Colour	LxW (mm)	Packed	Pk	Cat. No.
Industrial roll (500 wipes)	Turquoise	380x300	2 rolls, 500 wipes each	2 Roll	115-2396
Z-folded	Turquoise	380x300	10 packs, 50 wipes each	500	115-2397



INDUSTRIAL WIPES, MELT-BLOWN

These melt-blown wipes, made from 100% PP, have a very high absorption capacity.

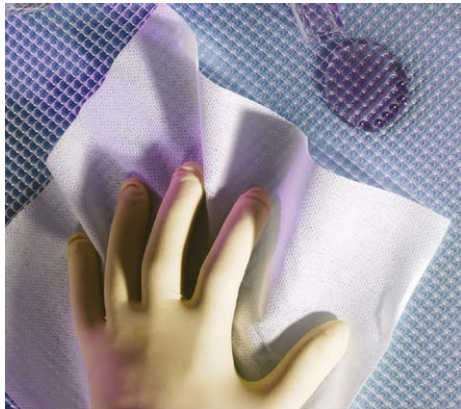
- Absorb water, grease and oil
- Resistant to acids and solvents
- Soft, synthetic, colour-fast
- Recyclable
- Silicone-free
- Food contact certified

Typical applications include: Aerospace, automotive, electronics, food and beverage, laboratories, printing and janitorial tasks.

Basis weight: 70 g/m²

Absorption: 660% (water); 1350% (oil)

Description	Colour	LxW (mm)	Packed	Pk	Cat. No.
Industrial roll (500 wipes)	Blue	380x320	1 roll with 500 wipes	1 Roll	115-2418
Z-folded	Blue	380x400	20 packs, 25 wipes each	500	115-2419



CLEANROOM WIPE, SPEC-WIPE® 3E

Durable, non woven wipes made from 46% polyester and 54% cellulose.

- Hydroentangled: For a durable wipe that produces less particulation than some other non woven methods
- Hydroentangled without chemicals to reduce ionic contamination
- Lightweight polyester/cellulose combination: Economical and sorbent
- Creped fabric for softness and bulk

Suitable for use in Class 1000, ISO 6 cleanrooms.

Colour: White

LxW (mm)	Packed	Pk	Cat. No.
229x229	300 per bag	300	115-0597
305x305	150 per bag	150	115-0598

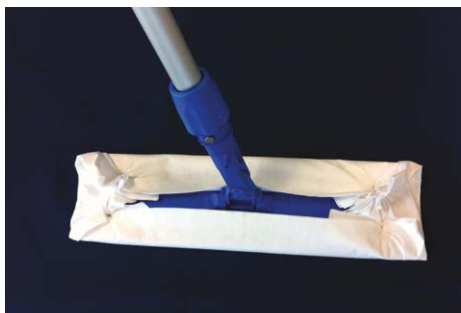


CLEANROOM WIPE, B'WIPE, 1000 SERIES

Absorbent non woven wipe for use in ISO 5 - 6 cleanrooms.

- Non woven wipe, made of hydroentangled 55% cellulose and 45% polyester (68 g/m²)
- High absorbency, strong and durable
- Works well with IPA and other solvents
- Ideal for spill control and general purpose wiping

Description	LxW (mm)	Packed	Pk	Cat. No.
Series 1000 wipes	230x230	Stacked, 2x150	300	115-1825
Series 1000 wipes	300x300	Stacked, 1x150	150	115-1803
Series 1000 floor wipes	250x600	Stacked, 1x75	75	115-1804



CLEANROOM WIPE, NON WOVEN, SPEC-WIPE® 3

Designed for cleaning laminar flow benches, cleanroom surfaces, quartzware and general process equipment. Appropriate for electronics, pharmaceutical, biotechnology, chemical and petroleum, environmental and education industries. Non textured.

- 45% polyester, 55% cellulose
- Re-sealable pouches maintain product integrity and preserve cleanliness
- Hydroentangled without using chemicals, reduces ionic contamination

Suitable for use in Class 100, ISO 5 cleanrooms.

Colour: White

Description	LxW (mm)	Packed	Pk	Cat. No.
Spec-Wipe® 3	229x229	300/bag	300	115-0031
Spec-Wipe® 3	305x305	150/bag	150	115-0032



CLEANROOM WIPES, PRE-SATURATED, SPEC-WIPE® 3

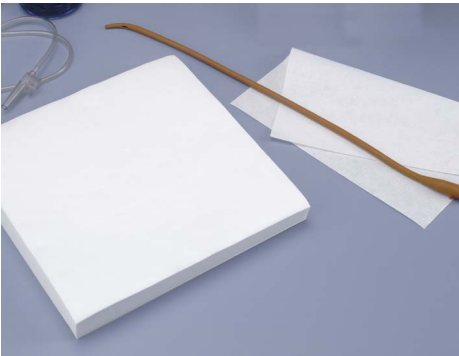
These non woven wipes made from 45% polyester and 55% cellulose are designed for cleaning laminar flow benches, cleanroom surfaces, and general process equipment. The wipe is pre-saturated with semiconductor grade solvent (70% IPA / 30% DIW) for safe storage, mixing, and dispensing.

- Re-sealable pouches maintain product integrity, preserve cleanliness and saturation levels
- Pre-saturated wipes reduce solvent use, chemical blending and waste
- Hydroentangled without using chemicals, reduces ionic contamination

Suitable for use in Class 1000, ISO 6 cleanrooms.

Colour: White

Description	L×W (mm)	Packed	Pk	Cat. No.
Spec-Wipe® 3, saturated with 70% IPA, 30% deionised water	229×229	75/bag	75	115-0034



CLEANROOM WIPES, STERILE, SPEC-WIPE® 5

These cleanroom wipes are made of polyester and cellulose.

- Non textured
- Hydroentangled without using chemicals, reduces ionic contamination
- Sterilised by gamma radiation to SAL (Sterility Assurance Level) of 10⁻⁶

Designed for cleaning laminar flow benches, cleanroom surfaces, quartzware and general process equipment. Appropriate for pharmaceutical and biotechnology industries.

Suitable for use in Grade A, ISO 5 cleanrooms.

Colour: White

In accordance with ANSI/AAMI/ISO 11137 and AMMI TIR 27 Method VDmax guidelines.

L×W (mm)	Packed	Pk	Cat. No.
300×300	20 wipes per pouch, 5 pouches per bag	100	115-0033



CLEANROOM WIPES, NON WOVEN, SPEC-WIPE® 5

Treated 45% polyester/55% cellulose non woven wipes.

- Polyester/cellulose combination, improves absorbency
- Hydroentangled giving a durable wipe with less particulation
- Durable wipe that produces less particulation than some other non woven methods
- Specially treated to reduce particles

Ideal for cleaning of surfaces and laminar flow benches, absorbing spills of water and most common solvents and general all-purpose cleaning.

Suitable for use in Class 100, ISO 5 cleanrooms.

Colour: White

L×W (mm)	Packed	Pk	Cat. No.
229×229	300 per bag	300	115-0041



CLEANROOM WIPES, B'WIPES, 3000 SERIES

Polyester wipe for use in ISO 5 cleanrooms.

- Single knit polyester wipe, with knife cut edges (130 g/m²)
- Laundered for better cleanliness
- Good wiping efficiency and abrasion resistance
- Ideal for general cleaning of all types of surfaces
- Available in an economical version for floors

Description	LxW (mm)	Packed	Pk	Cat. No.
Series 3000 wipes	230x230	Stacked, 1x150	150	115-1806
Series 3000 wipes	230x230	Bulk, 1x150	150	115-1826
Series 3000 floor wipes	250x580	Stacked, 1x75	75	115-1805



CLEANROOM WIPES, SPEC-WIPE® 4

Excellent for cleaning rough, abrasive, or irregular surfaces, yet soft enough for delicate surfaces. Appropriate for pharmaceutical and biotechnology industries.

- For critical process cleaning and environments where low particle and fibre generation is critical
- Made from 100% double-knit polyester laundered in ISO Class 4 cleanroom to reduce particulate and extractable contaminants
- Durable double-knit allows rigorous cleaning, is also soft for delicate surfaces
- Re-sealable pouches maintain product integrity, preserve cleanliness and saturation levels
- Option of pre-saturated wipes, which reduce solvent use, chemical blending and waste

Suitable for use in class 10, ISO 4 cleanrooms.

Colour: White

Half-folded wipes are packaged in a re-sealable pouch.

Properties above reflect the data for the wipe in an unsaturated state. Wipes are manufactured using USP grade IPA (isopropanol) filtered to 0,5 µm.

Description	LxW (mm)	Packed	Pk	Cat. No.
Spec-Wipe® 4	229x229	150 per bag	150	115-0036
Spec-Wipe® 4, saturated with 70% IPA, 30% deionised water	229x229	30 per bag	30	115-0039



Designed for protection

VWR® Lab Safety

- Eyewear

- Footwear

- First aid kits

- Gloves

- Hand cleaning

- Labcoats and apparel

- Respirators

- Spill kits

Discover this VWR Handy Solution Guide on vwr.com

PB18003-EN



CLEANROOM WIPES, STERILE, SPEC-WIPE® 4

These wipes are made from double-woven polyester fabric with close-cut edges and are washed in an ISO Class 4 cleanroom to minimise contamination by particles and extractables.

- For critical process cleaning and environments where sterility, low particle and fibre generation are critical
- Gamma sterilised to 10⁻⁶ SAL (Sterility Assurance Level)
- Resealable pouches to protect wipes from contamination

Ideal for cleaning abrasive surfaces, yet still soft enough for use on sensitive surfaces.

Suitable for use in Grade A, ISO 4 cleanrooms.

Colour: White

Compliant with ANSI/AAMI/ISO guidelines

LxW (mm)	Packed	Pk	Cat. No.
305x305	20/inner bag, 5 inner bags/outer bag, 3 outer bags/case	300	115-1724

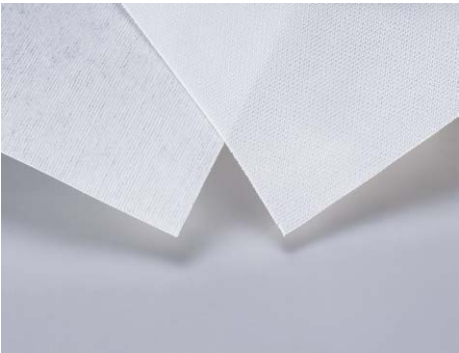


CLEANROOM WIPES, B'WIPES, 4000 SERIES

Polyester sealed-edge wipe for use in ISO 4 cleanrooms.

- Single-knit polyester wipe, with sealed edges (150 g/m²)
- Laundered and with sealed edges, for superior cleanliness
- Good mechanical resistance and absorption capacity
- Ideal for cleaning and disinfecting surfaces in critical environments

Description	LxW (mm)	Packed	Pk	Cat. No.
Series 4000 wipes	230x230	Stacked, 2x75	150	115-1827



CLEANROOM WIPES

These cleanroom wipes are made from 100% virgin grade, continuous filament polyester in a double-knit, no run interlock pattern to provide maximum cleanliness and absorbency.

- Laser cut with sealed edges
- Minimum particles, fibres, extractables and ions: Ideal for environments that demand low levels of contaminants
- Ultra-clean, highly absorbent and durable
- Economical
- Cleanroom laundered and packaged (ISO Class 4)

Designed for cleaning surfaces and controlling spills in ISO Class 3 or higher cleanroom environments, these durable wipes resist fibre release and abrasion under rigorous use, even when wiping rough surfaces.

Suitable for use in Class 1, ISO 3 environments.

Colour: White

LxW (mm)	Packed	Pk	Cat. No.
229x229	150/bag	150	115-0660
305x305	150/bag	150	115-0661

CLEANROOM WIPES, SPEC-WIPE® 7

Ideal for cleaning rough or uneven surfaces, yet still soft enough for use on sensitive surfaces. Use these 100% double-knit polyester wipes where minimum particle and fibre contamination is essential.

- Double-knit for extreme durability, continuous single filaments for extra softness
- Sealed edges prevent release of fibres and lint
- Laundered in an ISO Class 4 cleanroom to reduce particulate and extractable contaminants

Suitable for use in Class 1, ISO Class 3 cleanrooms.

Colour: White



Description	LxW (mm)	Packed	Pk	Cat. No.
Spec-Wipe® 7	229x229	100 wipes/bag	100	115-0043
Spec-Wipe® 7	305x305	100 wipes/bag	100	115-0044

CLEANROOM WIPES, B'WIPES, 5000 SERIES

Polyester sealed-border wipe for use in ISO 3 cleanrooms.

- Double knit polyester wipe, with sealed borders (135 g/m²)
- Laundered and with sealed borders, for low release of fibres even under mechanical stress
- Good mechanical resistance and absorption capacity
- Ideal for cleaning heavy soils and disinfecting surfaces in critical areas



Description	LxW (mm)	Packed	Pk	Cat. No.
Series 5000 wipes	230x230	Stacked, 2x75	150	115-1902

CLEANROOM MOP WIPE

This mop wipe is made from 2 ply quilted knitted polyester with thin sealed edges.

- Constructed from continuous-filament polyester in interlock knitting
- High absorbency
- Low particle and fibre contamination
- Ultrasonic bonded two-layer construction
- Processed and packed in an ISO 5 cleanroom

Ideal for mopping floors and walls, as well as spill control in ISO 5 and above environments.

Suitable for use in pharmaceutical production, microelectronic facilities and other high-tech industries.

Weight: 220 g/m²

LxW (mm)	Packed	Colour	Pk	Cat. No.
250x600	25/bag, 10 bags/box	White	250	141-1402

CLEANROOM WIPES, B'WIPES, 6000 SERIES

2 ply polyester sealed-border wipe for use in ISO 3 cleanrooms.

- Quilted polyester wipe, constructed from 2 plies, with sealed borders
- Laundered and with sealed borders, for excellent cleanliness
- 2 ply quilted, for extreme absorption
- Ideal for spill control in critical areas, and for applying a cleaning/disinfecting solution over a large surface



Description	LxW (mm)	Packed	Pk	Cat. No.
Series 6000 wipes	230x230	Stacked, 2x50	100	115-1821
Series 6000 wipes	230x230	Bulk, 2x50	100	115-1823

CLEANROOM WIPE

This wipe is made from 2 ply quilted knitted polyester with wide sealed borders.

- Constructed from continuous-filament polyester in interlock knitting
- High absorbency
- Low particle and fibre contamination
- Ultrasonic bonded two-layer construction
- Processed and packed in an ISO 4 cleanroom

Ideal for wiping interior of process tools and other equipment as well as for spill control and general wiping in ISO 5 and above environments.
Suitable for use in pharmaceutical production, microelectronic facilities and other high-tech industries.

Weight: 220 g/m²

LxW (mm)	Packed	Colour	Pk	Cat. No.
310x310	2x50/bag, 10 bags/case	White	1.000	115-2446

CLEANROOM WIPES, B'WIPES, 7000 SERIES

Microfibre sealed-edge wipe for use in ISO 3 cleanrooms.

- Microfibre polyester/nylon wipe, with sealed edges (165 g/m²)
- Laundered and with sealed edges, for excellent cleanliness
- Very fine microfibre filaments, densely knitted, greatly increase the quantity of contaminants picked up by the wipe, even when dry
- Reduces the risk of scratching sensitive surfaces, such as optics
- Ideal for cleaning sensitive surfaces, or when wet wiping is not an option



Description	LxW (mm)	Packed	Pk	Cat. No.
Series 7000 wipes	150x150	Stacked, 10x10	100	115-1824
Series 7000 wipes	230x230	Stacked, 10x10	100	115-1829



149-0331



149-0332



149-0340



149-0341



149-0342

CRITICAL SWABS

Critical swabs designed for cleaning disc drives, optics, PC board assembly and other sensitive components.

- Highly absorbent
- Low-linting formulations reduce contamination
- Double-head items in a white anti-static leaf pack

Model	149-0331	149-0332	149-0340	149-0341	149-0342
Handle length	152 mm		82 mm	78 mm	76 mm
Handle width	2,5 mm				1,5 mm
Head length	16 mm	18 mm	11 mm	15 mm	14 mm
Head width	4,8 mm	6 mm	4,7 mm	4,4 mm	3,2 mm

Description	Shaft/head	Pk	Cat. No.
Absorbent autoclavable swabs	Wood/cotton	1.000	149-0331
Large absorbent autoclavable swabs	Wood/cotton	500	149-0332
Double-head cone-shaped highly absorbent swabs	Paper/cotton	1.250	149-0340
Double-head highly absorbent swabs	Paper/cotton	2.500	149-0341
Double-head highly absorbent slim swabs	Paper/cotton	2.500	149-0342



149-0335



149-0336

CRITICAL SWABS, WITH 'FOAM OVER COTTON' HEADS

Disposable 'foam over cotton' tip swab features 100% polyurethane foam with 100 ppi and a wooden shaft.

- Combine the benefits of foam and cotton head swabs
- Foam exterior resists abrasion and most solvents
- Cotton core is highly absorbent

Model	149-0335	149-0336
Handle length	152 mm	
Handle width	2,5 mm	
Head length	20 mm	24 mm
Head width	6,5 mm	9,5 mm

Description	Shaft/head	Length (mm)	Pk	Cat. No.
Small 'foam over cotton' head swabs	Wood/foam	171	500	149-0335
Small 'foam over cotton' head swabs	Wood/foam	176	500	149-0336

VWR
COLLECTION

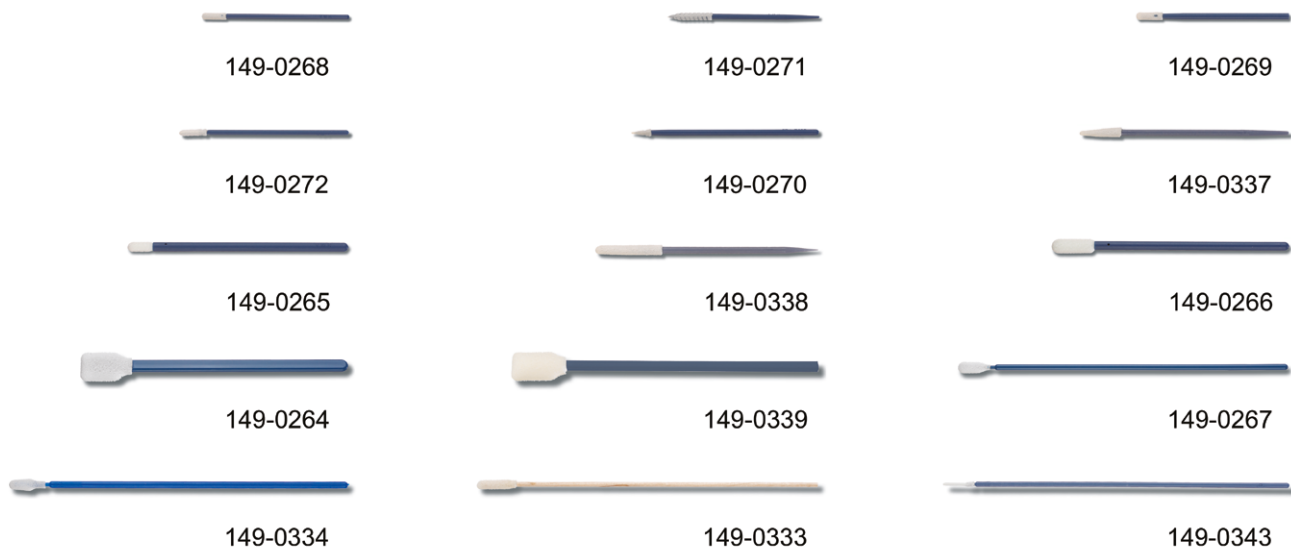
Designed for protection

VWR® solutions for
safe production of
cytotoxic drugs

A SPECIAL RESPONSIBILITY FOR PRODUCT, EMPLOYEE AND PATIENT

Please visit
vwr.com if you
have specific
needs for product
and services.

PB18014-EN



CRITICAL SWABS

Swabs feature 100 ppi open or closed cell polyurethane foam with 100% virgin polypropylene handle. Some have a blue glass fibre reinforced polypropylene shaft for extra rigidity, especially for use in critical environments.

- Non abrasive to protect delicate components
- Heads are thermally-bonded to the handle without adhesive
- Withstands most widely used solvents in controlled environments

Model	Handle length	Handle width	Head length	Head width
149-0264	106 mm	6,6 mm	25 mm	15 mm
149-0271	50 mm	2,5 mm	20 mm	3,4 mm
149-0272	60 mm	2,2 mm	20 mm	3,2 mm
149-0265	93 mm	4,3 mm	12 mm	4,8 mm
149-0266	93 mm	4,3 mm	21 mm	7 mm
149-0267	146 mm	3,2 mm	17 mm	6,2 mm
149-0268	58 mm	2,4 mm	10 mm	3,4 mm
149-0269	59 mm	3 mm	12 mm	3,6 mm
149-0270	79 mm	3 mm	10 mm	3,5 mm
149-0333	152 mm	2,5 mm	18 mm	4,8 mm
149-0334	152 mm	3 mm	15 mm	5 mm
149-0337	64 mm	2,5 mm	18 mm	4 mm
149-0338	83 mm	5 mm	25 mm	3,6 mm
149-0339	130 mm	5 mm	25 mm	13,5 mm
149-0343	161 mm	2,4 mm	14 mm	1,8 mm

Description	Shaft/head	Length (mm)	Pk	Cat. No.
Large rectangular foam head (closed)	PP/foam	131	100	149-0264
Medium pointed compressed foam head (open)	PP/foam	70	500	149-0271
Micro foam head (open)	PP/foam	80	500	149-0272
Medium flexible foam head with a nylon handle (closed)	PP/foam	105	100	149-0265
Large flexible foam head (closed)	PP/foam	114	100	149-0266
Medium foam head (open)	PP/foam	163	500	149-0267
Small foam head with flexible tip (open)	PP/foam	68	500	149-0268
Small foam head (open)	PP/foam	71	500	149-0269
Mini-pointed compressed foam head (open)	PP/foam	89	500	149-0270
Foam head with a wooden shaft	PP/foam	170	500	149-0333
Paddle-shaped flexible swabs	PP/foam	167	500	149-0334
Cone-shaped reticulated swabs	PP/foam	81,5	500	149-0337
Extended length reticulated swabs	PP/foam	108	500	149-0338
Large rectangular swabs	PP/foam	155	500	149-0339
Fine-point reticulated swabs	PP/foam	175	500	149-0343

MICROFIBRE MOP CLEANING SYSTEM

The VWR® Microfibre Mop cleaning system offers a total cleaning solution for floors, walls and ceilings. This system does not require any specific training as it is very simple and flexible to use.

- Cost effective: One mop can clean up to 25 m²
- Ergonomic and easy to use
- Depending on the need, the mop frame unit can be inserted in the flat wringer in order to get the desired mop moisture: Wet for disinfection or moist for cleaning

The VWR® Microfibre Mop cleaning system consists of:

- Stainless steel trolley equipped with a choice of either 2 or 3 buckets
- Ergonomic flat wringer
- Ergonomic telescopic handle and mop frame
- Low friction microfibre VWR® controlled environment mops

VWR® controlled environment microfibre mop:

Made from 100% PES microfibre. Laser cut for lint-free ends.

Excellent mechanical cleaning performance

For floors, walls and ceilings

Heat and chemical resistant, suitable for sterilisation (autoclave or radiation)

Complies with both ISO Class 5 and GMP A+B requirements.

All components are autoclavable.



VWR® Microfibre Mop cleaning system



VWR® Microfibre Mop cover

Description	Length (mm)	Pk	Cat. No.
Mops			
VWR® Microfibre Mop cover - microfibre, 50 cm		1	129-0451
Handle and mop frames			
Aluminium telescopic handle	1000-1800	1	129-0456
Sweep Duo Press		1	129-0455
Sweep Duo Mop frame		1	129-0457
Buckets			
Bucket 6 l		1	129-0458
Bucket 25 l		1	129-0454
CE bucket trolley			
CE bucket system trolley, without accessories, suitable for autoclaving and ISO Class 5		1	141-0937

SELF-WRINGING MOPPING SYSTEM

This mopping system can be used without a wringer. It is particularly suitable for applying disinfectants to floors, walls and ceilings. The new, high performance foam for cleanrooms enables excellent and lasting liquid transfer.

- Autoclavable; resistant to gamma rays and ETO
- Resistant to most widely available disinfectants and detergents
- Sponges made from laminated polyester for liquid absorption and highly delicate, lint-free disinfection
- Replacement foam mop heads are available with stainless steel or galvanised steel clips

Description	Pk	Cat. No.
Handles		
Telescopic cleaning system (handle + head), made from aluminium (1486 - 1937x254 mm) and blue sponge (254x83 mm)	1	129-0270
Replacement sponges (A)		
General purpose sponge with stainless steel clip (254x83 mm), blue	12	129-2506
General purpose sponge with stainless steel clip (355x83 mm), blue	12	129-2507
General purpose sponge with galvanised clip (355x83 mm), blue	12	129-2505
Laminated polyester sponge with stainless steel clip (355x83 mm)	12	129-2508
Laminated microfibre sponge with stainless steel clip (355x83mm)	12	129-2509

SELF-WRINGING CLEANROOM ROLLER MOPS, ROLL-O-MATIC®
VILEDA PROFESSIONAL

Roll-O-Matic® is the ideal tool for cleaning or disinfection of floors, walls and ceilings in hygiene-sensitive areas.

It has a self-wringing mechanism and is best used with the 'pull and lift' technique recommended for cleaning and disinfecting. It's simple to use and eliminates bulky and expensive wringers.

- Integrated wringing mechanism for use with 'pull and lift' technique
- Coloured clips on the handles allow for colour coding of equipment
- Stainless steel handles are compatible with gamma and autoclave sterilisation
- Straight head design allow the user to flip over mop head to uses both sides

The aluminum and stainless steel Roll-O-Matic® mops are ideal when seeking one mop to apply disinfectant, clean surfaces, or absorb liquids in production and controlled environments. Aluminum extendable and stainless steel Roll-O-Matic® mops are constructed to resist repeated autoclave cycles, and continually being exposed to the common chemicals and disinfectants used in controlled environments.

Roll-O-Matic® mop head refills feature new foam, manufactured specifically for the controlled environments, that allows 25% more liquid absorption and 2x more liquid release than similar foams. Completely autoclavable, resistant to gamma and ETO sterilisation. Each refill is individually packed and lot number controlled.



Description	Length (mm)	Pk	Cat. No.
Handles			
Stainless steel handle with 255 mm Original refill	1220	1	141-1439
Stainless steel handle with 355 mm Original refill	1220	1	141-1440
Aluminium extendable handle with 355 mm Original refill	1480-1930	1	141-1441

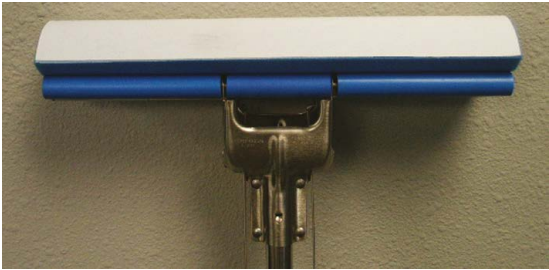
MOP HEADS, CLEANROOM, PURSPONGE

Suitable for wet wiping in sterile areas and cleanrooms. One-piece, made from highly absorbent polyurethane. The coated mop heads are particularly suitable for disinfecting rough or sharp-edged surfaces while still ensuring excellent take-up of liquids.

Models available for use with Perfex or Roll-O-Matic® handles

Perfex model made from PU (on PE base), coated or uncoated.
Roll-O-Matic® model made from highly absorbent PU sponge with clamp, available with or without coating

The Perfex or Rol-O-Matic® mop handles are not included. These must be ordered separately.



Description	Pk	Cat. No.
Mop heads for Roll-O-Matic® mop system		
General purpose sponge with galvanised clip (254x83 mm), blue	12	129-2504

CLEANING SOLUTION, IPASEPT 70®

Iso-propyl alcohol Ph. Eur. 70% V/V with purified water Ph. Eur. 30% V/V, filtered at 0,2 µm

- Filled under GMP conditions in cleanroom ISO Class 7
- Certificate of Analysis is available for each batch
- Fine stream for precise applications, or wide spray for covering large areas

For surface spray cleaning with or without wipes. Also for cleaning gloved hands before entry into cleanrooms. Ideal for wiping down entrances to controlled environments.

Description	Packed	Pk	Cat. No.
IPASEPT 70®	6x1 l trigger spray bottles	6 l	93002.1016
IPASEPT 70®	1x 10 litre cannister	10 l	93002.9010

IPASEPT® 70, STERILE

Iso-propyl alcohol Ph. Eur. 70% V/V with purified water Ph. Eur. 30% V/V, filtered at 0,2 µm

- Sterilisation by gamma-irradiation
- Sterility Assurance Level (SAL) 10⁻⁶
- Filled under GMP conditions in cleanroom ISO Class 7
- Certificate of Analysis is available for each batch
- Fine stream for precise applications, or wide spray for covering large areas

For surface spray cleaning with or without wipes. Also for cleaning gloved hands before entry into cleanrooms. Ideal for wiping down entrances to controlled environments.

Description	Packed	Pk	Cat. No.
IPASEPT® 70, sterile	6x 1 litre trigger spray bottles	6 l	94006.1016



designed for every day use

VWR®
for your space

- Chairs
- Seating
- Stools
- Lights
- Trolleys
- Ladders
- PCR workstation
- Glove boxes
- Organisers
- Mats
- Log books
- Markers

Discover this
VWR Handy
Solution Guide
on **vwr.com**

PB18001-EN



132-0421



132-0424

CHAIRS, STOOL, MR. LAB CLEANROOM LINE

All chairs and stools are available with a five star base which is made from aluminium.

- Gas lift seat height adjustment
- Adjustable backrest height and inclination
- Sealed upholstery with special foam technology, in artificial leather covering, washable and disinfectant-proof
- Materials suitable for use in cleanrooms
- Smooth, sealed surfaces
- Encapsulated mechanisms
- Electrostatic discharge measure

Glides: The glides are wear-proof plastic and have a large surface area offering a high level of stability.

Castors: Dual-wheel castors with load-sensitive brakes have to be right for the floor. All chairs are supplied with soft castors for hard floors as standard. Hard castors for soft floors are also available as an option.

Stop&Go technology: For safety reasons chairs whose seat is more than 650 mm high must not be movable whilst in use. With innovative Stop&Go castors these chairs are only mobile when no one is sitting on them.

In order to create 'clean' or 'sterile' rooms, measures have to be implemented to prevent products and processes from becoming contaminated. This is a key requirement of the microelectronics sector, the pharmaceuticals industry, microsystem production, optics, medical engineering and healthcare.

VWR cleanrooms chairs meet the requirements of air cleanliness classification 3 in accordance with DIN EN ISO 14644-1, cleanroom classification 1 as defined by US Federal Standard 209E and the specifications of the EU GMP guidelines. Electrostatic discharge protection according to EN 61340-5-1.

Description	Height (mm)	Foot form	Foot ring	Pk	Cat. No.
Cleanroom chair, black skai, with permanent contact backrest and aluminium polished base	470 - 620	Castors	-	1	132-0421
Cleanroom chair, black skai, with permanent contact backrest and aluminium polished base	600 - 870	Glides	+	1	132-0422
Cleanroom chair, black skai, with permanent contact backrest and aluminium polished base	640 - 910	Stop&Go castors	+	1	132-0503
Cleanroom stool, black skai, with aluminium polished base	460 - 630	Castors	-	1	132-0424

Description	Pk	Cat. No.
Accessories		
Armrest, black	1 PAIR	132-0423



CHAIRS, MR. LAB ESD LINE

All chairs and stools are available with a five star base which is made from aluminium.

- Backrest adjustable in height and inclination
- Seat height adjustment by gas-lift
- Upholstery in artificial leather covering, washable and disinfectant-proof

Glides: The glides are wear-proof plastic and have a large surface area offering a high level of stability.

Castors: Dual-wheel castors with load-sensitive brakes have to be right for the floor. All chairs are supplied with soft castors for hard floors as standard. Hard castors for soft floors are also available as an option.

Stop&Go technology: For safety reasons chairs whose seat is more than 650 mm high must not be movable whilst in use. With innovative Stop&Go castors these chairs are only mobile when no one is sitting on them.

ESD (Electro Static Discharge) refers to the electrostatic discharge of charged objects or people. Electrostatic discharge can result in damage to microelectronic components.

Conforms to security level S2, GMP. Soft discharge is achieved on the basis of a fixed and defined discharge resistance of 106 Ω in accordance with DIN EN 61340-5-1.

Description	Height (mm)	Foot form	Foot ring	Pk	Cat. No.
ESD chair made from black skai, with permanent contact backrest and aluminium polished base, plastic parts in black	470 - 620	Castors	-	1	132-0419
ESD chair made from black skai, with permanent contact backrest and aluminium polished base, plastic parts in black	620 - 870	Glides	+	1	132-0420
ESD chair made from black skai, with permanent contact backrest and aluminium polished base, plastic parts in black	640 - 910	Stop&Go castors	+	1	132-0502

Description	Pk	Cat. No.
Accessories		
Armrest, black	1 PAIR	132-0423
Castors	1 SET	132-0427

ESD CHAIRS AND STOOLS FOR CLEANROOMS

Ergonomic and auto-adaptive chairs or stools made from PU, for cleanrooms

- Auto-adaptive to users and to their positions
- Facilitates an upright posture
- Minimises spinal stress
- Abrasion resistant
- Black steel 5 branch scuff resistant, reinforced base
- Black gas lift column with height adjustment and shock absorber

The innovative seat design consist of a short seat tilted forward, split into 2 parts, based on blue silent-blocks.

Special conductive PU connects to the metal parts of the chairs and stools, allowing electricity to be discharged through carbon castors or pads.

ISO Class 3 Certificate.



Description	Height (mm)	Foot form	Foot ring	Pk	Cat. No.
Chairs					
Cleanroom chair, deformable seat in anti-static black soft PU, tilted 2° forward, with high backrest in PU, adjustable in depth and lumbar support	470 - 605	Heavy-duty anti-static castors	-	1	132-1372
Cleanroom chair, deformable seat in anti-static black soft PU, tilted 2° forward, with lumbar support in PU, adjustable in depth	510 - 645	Anti-static castors	-	1	132-1370
Cleanroom chair, deformable seat in anti-static black soft PU, tilted 2° forward, with high backrest in PU, adjustable in depth and lumbar support	610 - 855	Anti-static glides	-	1	132-1373
Cleanroom chair, deformable seat in anti-static black soft PU, tilted 2° forward, with lumbar support in PU, adjustable in depth	610 - 855	Anti-static glides	+	1	132-1371
Stools					
Cleanroom stool, deformable seat in anti-static black soft PU, tilted 2° forward	510 - 645	Heavy-duty anti-static castors	-	1	132-1368
Cleanroom stool, deformable seat in anti-static black soft PU, tilted 2° forward	610 - 855	Anti-static glides	+	1	132-1369



ESD CHAIRS, STAR TEC

ESD chairs, with conductive seat and back, in black artificial leather, are soft and comfortable. The permanent backrest follows all movements and supports dynamic sitting in the laboratories. Extra large and ergonomically designed backrest with integrated lumbar support, the upholstery pads on the backrest provide maximum seating comfort and optimal microclimate, the taperest backrest in the upper area offers elbow-room for flexible work in laboratories and maximum freedom of movement.

- Reliable ESD protection
- Washable, resistant to disinfectants
- Robust and easy to clean
- Backrest adjustable in height and inclination
- The seat inclination adjustment supports the forward-angled working position which is typical for laboratory work
- Every function can be operated comfortable and easy in sitting position
- Practical handle on the backrest which provides maximum mobility and easy handling
- Polished aluminium star base

Suitable for use in biosafety laboratories BSL 1 and BSL 2, GMP conform. Compliant to ESD-norm EN 61340-5-1.

Description	Height (mm)	Foot form	Foot ring	Pk	Cat. No.
ESD chair Star Tec, with black upholstery artificial leather and blue coloured handle	450 – 630	Soft ESD castors for hard floors	-	1	132-1396
ESD chair Star Tec, with black upholstery artificial leather and grey coloured handle	450 – 630	Soft ESD castors for hard floors	-	1	132-1397
ESD chair Star Tec, with black upholstery artificial leather and blue coloured handle	590 – 860	Large ESD plastic glides	Height adjustable, chrome plated footring	1	132-1398
ESD chair Star Tec, with black upholstery artificial leather and grey coloured handle	590 – 860	Large ESD plastic glides	Height adjustable, chrome plated footring	1	132-1399
ESD chair Star Tec, with black upholstery artificial leather and blue coloured handle	620 – 890	ESD Stop&Go castors	Height adjustable, chrome plated footring	1	132-1400
ESD chair Star Tec, with black upholstery artificial leather and grey coloured handle	620 – 890	ESD Stop&Go castors	Height adjustable, chrome plated footring	1	132-1401



BUCKET LINERS, STERILE

Bucket liners create an impermeable barrier between disinfectant and receptacle.

- LDPE/nylon blend
- Irradiated
- Fits B-7 series buckets

Helps ensure the integrity of the disinfectant blend.

Individually bagged, double bagged in groups of 6. 4 packs of 6 per case.

Description	LxW (mm)	Pk	Cat. No.
Bucket liner	787x483	24	141-1380



PROTECTION COVERS, VWR® MAXIMUM

Manufactured from a specially formulated breathable microporous fabric, these covers are distinguished by their superior barrier protection capabilities.

- Superior fluid and particulate barrier
- Lowest level of particle shedding
- Light chemical splash resistance and maximum tear strength
- Tunnelled elastic along the bottom perimeter ensures a secure fit
- Serged seams

The covers provide a barrier protection against fluids, biologicals, particulates and light chemical splash.

Bacterial Filtration Efficiency: 99,9%

Level I per Helmke Drum test

Covers are rigorously tested and manufactured in an ISO Certified facility under stringent process controls to ensure that each item meets exacting quality standards and performs to specification.

Lot-controlled and validated through independent lab testing.

Description	Colour	W×D×H (mm)	Pk	Cat. No.
Protection cover, non sterile, nylon Velcro® closure	White	1270×710×1880	10	129-1210
Protection cover, sterile, nylon Velcro® closure	White	1270×710×1880	10	129-1218
Protection cover, non sterile, with elastic bottom	White	1470×1370×660	10	129-1215
Protection cover, sterile, with elastic bottom	White	1470×1370×660	10	129-1219



PROTECTION COVERS, VWR® MAXIMUM

Manufactured from fluid-impervious material.

- Full protection from fluids and light chemical splash
- Lowest level of particle shedding
- Clean, low linting fabric
- Tunnelled elastic along the bottom perimeter ensures a secure fit

The covers provide a barrier protection against fluids, biologicals, particulates, and light chemical splash.

Bacterial Filtration Efficiency: 99,9%

Level I per Helmke Drum test

Covers are rigorously tested and manufactured in an ISO Certified facility under stringent process controls to ensure that each item meets exacting quality standards and performs to specification.

Lot-controlled and validated through independent lab testing.

Description	Colour	W×D×H (mm)	Pk	Cat. No.
Protection cover, non sterile, with elastic bottom	Blue	1470×1370×660	10	129-1216
Protection cover, sterile, with elastic bottom	Blue	1470×1370×660	10	129-1220



CHEMICAL RESISTANT COVER, VWR® MAXIMUM

These chemical resistant covers provide the highest level of protection available.

- Superior chemical repellency as well as liquid and particle holdout
- Double-coated fabric protects against hazardous liquids and toxic chemicals
- Maximum durability and tear strength

These covers are designed to optimise barrier protection and prevent penetration by an extensive list of chemicals.

Covers are rigorously tested and manufactured in an ISO Certified facility under stringent process controls to ensure that each item meets exacting quality standards and performs to specification.

Lot-controlled and validated through independent lab testing.

Description	Colour	L×W (mm)	Pk	Cat. No.
Protection cover, non sterile	Yellow	18301530×1530	25	129-1217



CLEANROOM FLOORING, B'MAT

Decontamination flooring b'mat uses a patented polymer to attract and retain over 98% of foot-borne and wheel-borne particles. Particles are naturally attracted by the flooring surface, and are released only by wet cleaning. Decontamination flooring b'mat needs to be glued to the floor, which ensures a perfect hold and maximum lifespan. Ideal solution for contamination control in gowning areas, in material entry zones, and in cleanrooms.

- To restore to full efficacy, just mop, rinse and dry
- Low profile (2,5 mm thick) and bevelled edges made from PVC welded on all sides prevents tripping and carts can be pushed without effort
- Exceptional weight resistance: Ideal, not only for foot traffic, but also heavy lift or hand trucks
- Core properties of polymer: Bacteriostatic, ESD, non outgassing, chemical resistant

Coefficient of friction: 2,02 (ASTM C1028), 4,05 (Tortus)

Load resistance: 84 kg/cm²

Heat resistance: Use between 0 and 50 °C

Surface resistivity: 108 Ω/cm²

Colour: Blue

Type	LxW (mm)	Colour	Pk	Cat. No.
Cleanroom flooring	1400x1000	Blue	1 m	115-1822
Cleanroom flooring	1400x25000	Blue	25 m	115-2466



PERMANENT CLEANROOM MATS, B'MAT

Permanent mats are installed to provide the highest level of cleanliness. The life of the mats strongly depend on the volume and degree of cleanliness of the foot and wheeled traffic. Solvent-based cleaning materials should on no account be used on these mats: They will adversely affect both the function and the appearance. To avoid risk of slipping, it is also important that both the mats and the flooring should be completely dry.

- Special polymer (bacteriostatic, ESD, non outgassing)
- Attracts and retains over 98% of foot-borne and wheel-borne particles
- Bevelled edges on all four sides, operators can walk without tripping and trolleys can be pushed without effort
- To restore its full efficacy, just mop, rinse and dry it
- Weight resistance: 84 kg/cm² (compatible with foot traffic, but also with light hand trucks)
- Heat resistance: Use between 0 and 50 °C
- Backed with strips of double-sided adhesive tape, allowing them to be fixed on the floor, if necessary

Colour: Blue

LxW (mm)	Thickness	Colour	Pk	Cat. No.
500x800	2,5	Blue	1	115-1842
600x1200	2,5	Blue	1	115-1836
800x900	2,5	Blue	1	115-1837
900x1200	2,5	Blue	1	115-1834
940x1850	2,5	Blue	1	115-1831
1000x1200	2,5	Blue	1	115-1807
1000x1500	2,5	Blue	1	115-1840
1000x2000	2,5	Blue	1	115-1847
1000x2500	2,5	Blue	1	115-1833
1100x1200	2,5	Blue	1	115-1841
1200x1400	2,5	Blue	1	115-1835
1200x1500	2,5	Blue	1	115-1832
1200x2000	2,5	Blue	1	115-1808
1200x3000	2,5	Blue	1	115-1801
1200x3100	2,5	Blue	1	115-1838
1200x3900	2,5	Blue	1	115-1839
1200x4000	2,5	Blue	1	115-1802



MULTI-LAYER ADHESIVE FLOOR MATS, PURESTEP

A choice of either 3-0 or 60-layer adhesive entrance mats are manufactured from low density polyethylene. These mats control contamination by removing debris from the soles of shoes and the wheels of transport containers. When one layer is dirty, simply remove by the numbered corner tab, leaving a fresh layer ready for use.

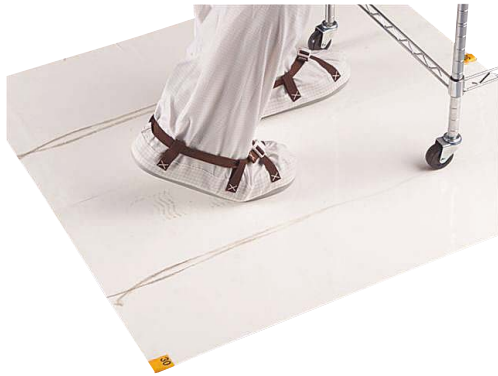
- Antimicrobial agent protects against the growth of bacteria and fungi
- Non slip, low profile, individually numbered layers
- Reduced maintenance and cleaning costs

Colour: Clear, white, grey or blue

LxW (mm)	Thickness (mm)	Colour	Pk	Cat. No.
Adhesive film mats, PureStep, 30 layers				
457x914	1,8	Blue	8	115-0055
457x914	1,8	Grey	8	115-0056
457x914	1,8	White	8	115-0057
457x1143	1,8	Blue	8	115-0061
457x1143	1,8	Grey	8	115-0062
457x1143	1,8	White	8	115-0063
610x762	1,8	Blue	4	115-0047
610x762	1,8	Clear	4	115-0048
610x762	1,8	Grey	4	115-0049
610x762	1,8	White	4	115-0050
610x914	1,8	Blue	8	115-0067
610x914	1,8	Grey	8	115-0068
610x914	1,8	White	8	115-0069
660x1143	1,8	Blue	8	115-0073
660x1143	1,8	Grey	8	115-0074
660x1143	1,8	White	8	115-0075
914x914	1,8	Blue	8	115-0079
914x914	1,8	Grey	8	115-0080
914x914	1,8	White	8	115-0081
914x1143	1,8	Blue	8	115-0085
914x1143	1,8	Grey	8	115-0086
914x1143	1,8	White	8	115-0087
914x1524	1,8	Blue	4	115-0091
914x1524	1,8	Grey	4	115-0092
914x1524	1,8	White	4	115-0093
Adhesive film mats, PureStep, 60 layers				
457x914	1,8	Blue	4	115-0058
457x914	1,8	Grey	4	115-0059

LxW (mm)	Thickness (mm)	Colour	Pk	Cat. No.
Adhesive film mats, PureStep, 60 layers				
457x914	1,8	White	4	115-0060
457x1143	1,8	Blue	4	115-0064
457x1143	1,8	Grey	4	115-0065
457x1143	1,8	White	4	115-0066
610x762	1,8	Blue	4	115-0051
610x762	1,8	Clear	4	115-0052
610x762	1,8	Grey	4	115-0053
610x762	1,8	White	4	115-0054
610x914	1,8	Blue	4	115-0070
610x914	1,8	Grey	4	115-0071
610x914	1,8	White	4	115-0072
660x1143	1,8	Blue	4	115-0076
660x1143	1,8	Grey	4	115-0077
660x1143	1,8	White	4	115-0078
914x914	1,8	Blue	4	115-0082
914x914	1,8	Grey	4	115-0083
914x914	1,8	White	4	115-0084
914x1143	1,8	Blue	4	115-0088
914x1143	1,8	Grey	4	115-0089
914x1143	1,8	White	4	115-0090
High tack mats, PureStep, 30 layers				
457x1143	1,8	Blue	8	115-0167
457x1143	1,8	White	8	115-1774
660x1143	1,8	Blue	8	115-1775
660x1143	1,8	White	8	115-1776
914x914	1,8	Blue	4	115-1748
High tack mats, PureStep, 60 layers				
660x1143	1,8	White	4	115-0168
914x1143	1,8	White	4	115-0169

Description	For	Pk	Cat. No.
Mat frames for PureStep mats			
Mat frame	457x914 mm	1	115-1287
Mat frame	457x1143 mm	1	115-1288
Mat frame	609x914 mm	1	115-1289
Mat frame	660x1143 mm	1	115-1290
Mat frame	914x914 mm	1	115-1291
Mat frame	914x1524 mm	1	115-1292



MAT FRAMES FOR PURESTEP MATS

These frames are designed to be used with the PureStep mats to create a system that is ideal for any critical area that does not allow direct adhesion to the flooring surface. The frames are constructed of a hard, rigid, polystyrene base material combined with a non skid backing that holds the mats in place on almost any surface.

- Protect floors from adhesive residue from the mats
- Reduces the risk of slips and falls
- Non slip parts made from polymer coated polyester textile
- Naturally antimicrobial, mould and mildew resistant

Description	For	LxW (mm)	Thickness (mm)	Colour	Pk	Cat. No.
Mat frame	457x914 mm	508x965	3,2	White	1	115-1287
Mat frame	457x1143 mm	508x1194	3,2	White	1	115-1288
Mat frame	609x914 mm	660x965	3,2	White	1	115-1289
Mat frame	660x1143 mm	711x1193	3,2	White	1	115-1290
Mat frame	914x914 mm	965x965	3,2	White	1	115-1291
Mat frame	914x1524 mm	965x1574	3,2	White	1	115-1292
Mat frame	914x1140 mm	965x1194	3,2	White	1	115-1296



MULTI-LAYER ADHESIVE FLOOR MATS, ERGOMAT® STICKY MATS

Ergomat Sticky Mats provide a fast, convenient, reliable way to clean shoe soles or other items before entering a clean and sanitary area. These significantly reduce traffic-borne contaminants and have proven themselves effective in a wide variety of industries such as microelectronics, aerospace, pharmaceuticals and food processing. The disposable sticky mat consists of a stack of tear-off polyethylene films full adhesive sheets that effectively capture dirt and dust.

- 30 layers per mat
- Easily adhered to a frame with double-faced adhesive tape
- Uses a water-based acrylic adhesive, which has a pH of 7 to 8
- A clear release sheet protects the top sheet of the sticky mat until it is ready to use
- Corner tabs are numbered to show the number of remaining sheets

Colour: White

Frame needs to be ordered separately.

Meets DIN/ASTM requirements.

LxW (mm)	Thickness (mm)	Colour	Pk	Cat. No.
460x1140	1,19	White	10	115-2469

Description	For	Pk	Cat. No.
Accessories			
Mat frame	Ergomat® Sticky Mat, 460x1140 mm	1	115-2467
Mat frame kit; mat frame including 10 sheets Sticky Mat		1	115-2468



CLEANROOM TAPES

These multi-purpose vinyl tapes, wound on a plastic core, are ideal for use in cleanroom maintenance and support areas.

- Ideal for colour-coding, sealing, aisle marking and batching
- Matt finish can be written on with a cleanroom pen

Length: 32,9 m

Different colours available.

Single-packed in an easy tear perforated bag.

Description	Colour	Width (mm)	Pk	Cat. No.
Cleanroom tape, general purpose	White	25,4	1 Roll	817-0051
Cleanroom tape, general purpose	Transparent	25,4	36 Roll	817-0058
Cleanroom tape, general purpose	Black	25,4	1 Roll	817-0086
Cleanroom tape, general purpose	Dark blue	25,4	1 Roll	817-0087
Cleanroom tape, general purpose	Dark green	25,4	1 Roll	817-0088
Cleanroom tape, general purpose	Light blue	25,4	1 Roll	817-0089
Cleanroom tape, general purpose	Light green	25,4	1 Roll	817-0090
Cleanroom tape, general purpose	Orange	25,4	1 Roll	817-0091
Cleanroom tape, general purpose	Purple	25,4	1 Roll	817-0092
Cleanroom tape, general purpose	Red	25,4	1 Roll	817-0093
Cleanroom tape, general purpose	Yellow	25,4	1 Roll	817-0094
Cleanroom tape, general purpose	White	50,8	1 Roll	817-0076



WAFER BOX SEALING CLEANROOM TAPES

These tapes with polyethylene backing and acrylic adhesive have low out-gassing and good clean-peel properties. They are mostly used for color-coding and wafer box sealing.

- Over labelling (to protect paper labels)
- Maintenance
- Colour-coding

Processed in a controlled environment, tapes are wound on a plastic core and single-bagged.

Length: 32,9 m

Different colours available.

Description	Width (mm)	Colour	Pk	Cat. No.
Wafer box sealing cleanroom tape	25,4	Black	4 Roll	817-0095
Wafer box sealing cleanroom tape	25,4	White	1 Roll	817-0100
Wafer box sealing cleanroom tape	25,4	Dark blue	4 Roll	817-0096
Wafer box sealing cleanroom tape	25,4	Dark green	4 Roll	817-0097
Wafer box sealing cleanroom tape	25,4	Orange	4 Roll	817-0098
Wafer box sealing cleanroom tape	25,4	Red	1 Roll	817-0099
Wafer box sealing cleanroom tape	25,4	Yellow	4 Roll	817-0101
Wafer box sealing cleanroom tape	25,4	Transparent	36 Roll	817-0059
Wafer box sealing cleanroom tape	50,8	White	24 Roll	817-0065
Wafer box sealing cleanroom tape	50,8	Transparent	24 Roll	817-0063



CLEANROOM CONSTRUCTION TAPES, CTP

These tapes are made of polyethylene with a synthetic rubber adhesive.

- Easily bonds different media
- Serrated edge for easy tear
- High tack adhesive

Length: 32,9 m

Description	Colour	Width (mm)	Pk	Cat. No.
Cleanroom construction tape, CTP	White	25,4	36 Roll	817-0062
Cleanroom construction tape, CTP	White	50,8	1 Roll	817-0077



CLEANROOM PAPERS, PUREIMAGE™

Cleanroom paper is designed for use in cleanroom environments where the prevention of chemical and particle contamination is critical.

- High tensile strength and excellent heat resistance for enhanced copier and printing efficiency
- PE-binding technology results in very low levels of particles, non volatile residue and ion extractables
- Unique precision-cutting technology guarantees consistent sizing and cleanliness
- Paper is web-cleaned on both sides prior to sheeting

Format: DIN A4 or A5

Weight: 80 g/m² or 105 g/m²

Produced in an ISO Class 4 (FED-STD-209E Class 10/M2,5) cleanroom and cleaned and double-bagged in an ISO Class 5 (FED-STD-209E Class 100) cleanroom. Paper is suitable for use in ISO Class 4 (FED-STD-209E Class 10) to ISO Class 6 (FED-STD-209E Class 1000) cleanrooms.

Paper is packed 250 sheets per pack, 10 packs per case.

Description	Colour	Pk	Cat. No.
Non latex paper, A4 size	White	2.500	115-0149
Non latex paper, A4 size	Blue	2.500	115-0150
Non latex paper, A4 size	Green	2.500	115-0153
Non latex paper, A4 size	Violet	2.500	115-0155
Non latex paper, A4 size	White	2.500	115-0156
Latex-impregnated paper, A4 size	White	2.500	115-0163
Latex-impregnated paper, A4 size	Blue	2.500	115-0164
Latex-impregnated paper, A4 size	Yellow	2.500	115-0165
Latex-impregnated paper, A4 size	Green	2.500	115-0166
Latex-impregnated paper, A4 size	Blue	2.500	115-1951
Latex-impregnated paper, A5 size	Blue	5.000	115-1953



CLEANROOM NOTEBOOK, B-PAPER

Notebook paper.

- Ruled
- Different sizes

Description	Pk	Cat. No.
Notebook, A4	1	818-0258
Notebook, A5	1	818-0257
Notebook, Memo	1	818-0260

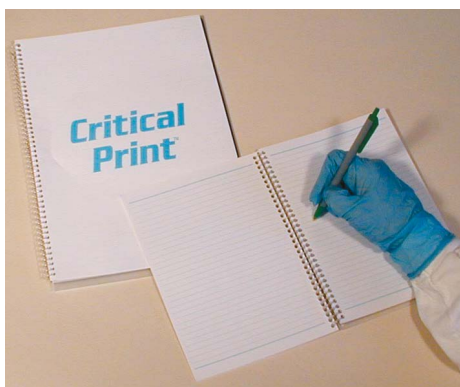


CLEANROOM PAPER, B-PAPER

Formulated with coated paper, without magnesium silicate, the b-paper 80 or 92 g is cut, cleaned and packed in a Class 100 (ISO 5) cleanroom.

- Different colours available
- Can be used with inkjet or laser printers, with copy machines, and is also suitable for note taking
- Low ionic and particle contamination
- Ideal for all cleanroom applications

Description	Colour	Weight (g)	Pk	Cat. No.
Paper, A4	White	80	250	818-0255
Paper, A4	Blue	80	250	818-0254
Paper, A4	Pink	80	250	818-0253
Paper, A4	Yellow	80	250	818-0252
Paper, A4	Green	80	250	818-0251
Paper, A4	Cream	80	250	818-0261
Paper, A4	White	92	250	818-0248
Paper, A4	Blue	92	250	818-0256
Paper, A3	Cream	80	250	818-0281
Paper, A3	White	80	250	818-0250
Paper, A3	Blue	80	250	818-0249



CLEANROOM NOTEBOOKS, PUREIMAGE™

These notebooks contain VWR PUREImage™ latex-free paper and have a see-through cover. Designed for use in cleanrooms and critical environments where particulate or extractable contamination control is imperative.

- Produced with new, latex-free, paper-binding technology
- College ruled on all pages
- Double-bagged in a Class 100 environment

Format: A4, A5, A6, 100 pages (50 sheet).

Description	Colour	Paper size	Type	No. of pages	Pk	Cat. No.
Notebook, latex-free	White	A4	Ruled	100	10	818-0126
Notebook, latex-free	White	A5	Ruled	100	20	818-0127
Notebook, latex-free	White	A6	Ruled	100	40	818-0128



CYTOTOXIC SPILL KITS

Protective clothing, tools, absorbents and wipes arranged in four multifunctional kits for rapid and safe cleaning of cytotoxic drug spillages. For use in hospitals, clinics, surgeries, pharmacies and laboratories.

Cytotoxic spill kit:

Cytotoxic Spill Kit PPE, Cytotoxic Spill Kit Liquid Clean Up, Cytotoxic Spill Kit Powder Clean Up, Cytotoxic Spill Kit Waste Disposal and sterile wipes for safe containment and removal of cytotoxic spillages.

Cytotoxic spill kit PPE:

Cleanroom gloves, polychloroprene, BioClean P-Zero™, sterile, size 8, natural (112-3877); chemo protective apron, BioClean-C™, CleanTough™ fabric, size: L, blue (113-8149); sleeve protector, Tyvek®, PS32LA, 500 mm, white (113-0494); cleanroom boot covers, BioClean-D™, CleanTough™, 400 mm, white (113-0814); cleanroom face masks, Maximum with earloop, blue (113-6220); cleanroom goggles, BioClean Clearview™, sterile, single-use, clear PC (111-0186).

Cytotoxic spill kit liquid clean up:

Absorbent, Chemizorb® powder for spillages 500 g (1.02051.0500); autoclavable scraper, PP, LxW: 250x110 mm, green (233-0194); scoop, LxW: 310x138 mm, white (233-0195); chemically inert tweezers, fine square tips, PTFE, white (232-0211).

Cytotoxic spill kit powder clean up:

Water for injection, Mini Plasco, 20 ml (331-0299); absorbent pad, PIG® HAZ-MAT, heavy weight, 510x380 mm (121-0527).

Cytotoxic spill kit waste disposal:

Disposal bag for hazardous waste, PE, black warning 'Hazardous Material Handle With Care' on bright yellow, small, LxW: 762x457 mm (121-0503); floor sign: 'Caution Hazardous Spill', PVC, LxW: 600x450 mm (116-0112); fixing clamp for floor-standing sign, PVC (116-0116).

Available as four single kits and as an 'All-In-One' version (Cytotoxic Spill Kit).

Description	Pk	Cat. No.
Cytotoxic Spill Kit contains 4 kits: Cytotoxic Spill Kit PPE, Cytotoxic Spill Kit Liquid Clean Up, Cytotoxic Spill Kit Powder Clean Up, Cytotoxic Spill Kit Waste Disposal and sterile wipes	1	121-0147
Cytotoxic Spill Kit PPE; incl. sterile gloves, chemo protective apron, sleeve protector, boot covers, face mask, single-use goggles	1	121-0148
Cytotoxic Spill Kit Liquid Clean Up; incl. absorbent Chemizorb® powder, PP scraper, filling scoop, PTFE tweezers	1	121-0149
Cytotoxic Spill Kit Powder Clean Up; incl. water for injection, absorbent pad, PIG® HAZ-MAT	1	121-0150
Cytotoxic Spill Kit Waste Disposal; incl. disposal PE bag for hazardous waste, PVC-floor sign: Caution Hazardous spill, fixing clamp for floor-standing sign	1	121-0151



Designed for protection

VWR® Lab
bric-a-brac

- Storage and organisation
- Transportation
- Recording and labelling
- Lighting
- Other handy stuff

Discover this
VWR Handy
Solution Guide
on [vwr.com](https://www.vwr.com)

PB18013-EN



AIR SAMPLERS, SAS SUPER DUO 360

When environmental contamination is very low, and the number of samples to be performed is high, operational duration can be an important factor in the choice of SAS instrument. Two sampling heads that operate simultaneously to sample 1000 litres of air in less than three minutes is the solution.

- Single body with two aspirating heads
- All manuals are available as USB key
- Instruction manual in six different languages

The simultaneous sampling on two heads also allows you to obtain statistically representative results when using the same type of media in both heads. It is also possible to use two different media for the same sampling cycle (TSA or PCA for Total Bacterial Count and SDA for yeasts and moulds). Sampling with the two heads can have sample process time, which is a real advantage for busy users.

ISO 14698 and USP 1116 Pharmacopoeia.

For complete system, please order the sampler you require, a battery charger and the appropriate head.

Airflow rate	180 l/min
Sampling head	Aluminium, stainless steel or plastic (certified ready to use)
WxDxH	260x110x352 mm
Weight	2,2 kg

Description	Model	Pk	Cat. No.
Air sampler using contact plates	SAS Super DUO 360	1	710-0867
Air sampler using Petri dishes	SAS Super DUO 360	1	710-0866

Description	Pk	Cat. No.
Accessories		
Adapter for Petri dishes Ø 90 mm	1	710-0882
Aluminium carrying case	1	710-0876
Aluminum aspirating head and for Ø 90 mm Petri dishes with adapter for Ø 55 mm contact plates	1	710-0879
Aluminum aspirating head for Ø 55 mm contact plates	1	710-0892
Aluminum aspirating head for Ø 90 mm Petri dishes	1	710-0886
Interface cable	1	710-0964
IQ-OQ-PQ validation protocols	1	710-0957
Soft carrying case	1	710-0888
Software	1	710-0975
Stainless steel aspirating head for Ø 55 mm contact plates	1	710-0880
Stainless steel aspirating head for Ø 90 mm Petri dishes	1	710-0878
Stainless steel floor tripod for cleanrooms	1	710-0889
Stainless steel head and adapter	1	710-0877
Stainless steel holder for table and wall	1	710-0963
Sterile heads for Ø 55 mm contact plates	40	710-0890
Sterile heads for Ø 90 mm Petri dishes	40	710-0891
Telescopic floor tripod	1	710-1857
Universal battery charger	1	710-0993



AIR SAMPLERS, SAS SUPER ISO

SAS Super ISO 100 and SAS Super ISO 180 are differentiated by differences in airflow; this choice depends on the application and allows continuous or sequential sampling from a few minutes to several hours. The data can be stored on the SAS instrument itself or on any remote PC.

- Design avoids turbulence in unidirectional airflow and reaspiration of tested air
- Portable and easily positioned, they operate with long life rechargeable batteries
- All manuals are available as USB key in six languages

Derived from the SAS instrument used on the International Space Station, the SAS Super ISO have been specifically designed for pharmaceutical and hospital sectors.

ISO 14698 & USP 1116 Pharmacopoeia.

For complete system, please order the sampler you require, a battery charger and the appropriate head.

Sampling head	Aluminium, stainless steel or plastic (certified ready to use)
WxDxH	120×125×275 mm
Weight	1,8 kg

Description	Model	Airflow	Pk	Cat. No.
Air sampler using contact plates	SAS Super ISO 100	100 l/min	1	710-0871
Air sampler using contact plates	SAS Super ISO 180	180 l/min	1	710-0872
Air sampler using Petri dishes	SAS Super ISO 100	100 l/min	1	710-0869
Air sampler using Petri dishes	SAS Super ISO 180	180 l/min	1	710-0870

Description	Pk	Cat. No.
Accessories		
Sterile heads for Ø 55 mm contact plates	40	710-0890
Sterile heads for Ø 90 mm Petri dishes	40	710-0891
Aluminum aspirating head for Ø 55 mm contact plates	1	710-0892
Stainless steel aspirating head for Ø 55 mm contact plates	1	710-0880
Aluminum aspirating head for Ø 90 mm Petri dishes	1	710-0886
Stainless steel aspirating head for Ø 90 mm Petri dishes	1	710-0878
Soft carrying case	1	710-0896
Aluminum carrying case	1	710-0875
Telescopic floor tripod	1	710-1857
IQ-OQ-PQ manual	1	710-1047
Adapter for Petri dishes Ø 90 mm	1	710-0882
Aspirating chamber for Petri dishes, Ø = 90 mm	1	710-0948
Aluminum aspirating head and for Ø 90 mm Petri dishes with adapter for Ø 55 mm contact plates	1	710-0879
Battery charger with interchangeable plug, 90 – 260 V	1	710-0973
Software for downloading data	1	710-0970
Downloading device for software	1	710-0971
Finished plate holder, 7 mm	3	710-1982
Stainless steel floor tripod for cleanrooms	1	710-0889



AIR SAMPLERS, SAS SUPER IAQ

The SAS Super IAQ provides the same efficiency as recorded by the sampling tests conducted by Centre for Applied Microbiology & Research (CAMR-UK).

- Microbiological air monitoring solution for agri-food and environmental operators
- Includes all accessories required for microbiological air sampling
- Easy to use and time saving, low operating cost solution

Designed specifically for the Indoor Air Quality (IAQ) sector, this SAS Super instrument is particularly lightweight and durable to operate in any environment, therefore suitable for environmental hygienists and agri-food sector operators.

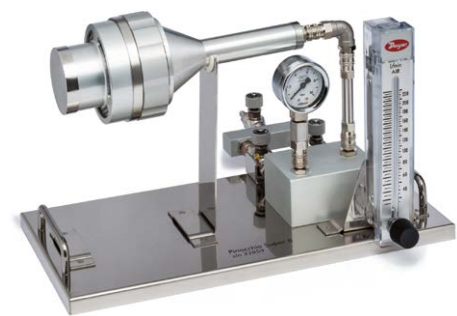
Supplied with aluminium aspirating head for Petri dishes (Ø 90 mm) or contact plates (Ø 55 mm), battery charger, remote control and soft carrying case.

Airflow rate	100 l/min
Sampling head	Aluminium
Power	220 V/50 Hz
WxDxH	105x110x290 mm
Weight	1,75 kg

Description	Model	Pk	Cat. No.
Sampler for contact plates	SAS Super IAQ	1	710-0868
Sampler for Petri dishes	SAS Super IAQ	1	710-0919

Description	Pk	Cat. No.
Accessories		
Universal battery charger	1	710-0993
Sterile heads for Ø 55 mm contact plates	40	710-0890
Sterile heads for Ø 90 mm Petri dishes	40	710-0891
Aluminum aspirating head for Ø 55 mm contact plates	1	710-0892
Aluminum aspirating head for Ø 90 mm Petri dishes	1	710-0886
Aluminum carrying case	1	710-0875

Description	Pk	Cat. No.
Accessories		
Telescopic floor tripod	1	710-1857
Adapter for Petri dishes Ø 90 mm	1	710-0882
Stainless steel holder for table and wall	1	710-0963
Aluminum aspirating head and for Ø 90 mm Petri dishes with adapter for Ø 55 mm contact plates	1	710-0879
Stainless steel floor tripod for cleanrooms	1	710-0889



AIR SAMPLER FOR COMPRESSED GASES, SAS SUPER PINOCCHIO II

SAS Super Pinocchio II is a microbial impaction sampler to test the quality of compressed air and gases used in cleanrooms. A compressed air source is connected and the flow meter regulated to achieve the required flow rate.

- Fully transportable
- 55 mm contact plates (RODAC) or 90 mm standard Petri dishes
- Sampling period timed to obtain the required total sample volume

IQ, OQ and PQ documentation available.

Self-contained unit consisting of connections, airflow meter, pressure gauge, tap, funnel head complete with plate housing.

Airflow rate	100 l/min
Material	Stainless steel
Max. temperature	40 °C
WxDxH	400x200x245 mm
Weight	2 kg

Description	Model	Pk	Cat. No.
Air microbial sampler using Petri dishes	SAS Super Pinocchio II	1	710-0950
Air microbial sampler using contact plates	SAS Super Pinocchio II	1	710-0949
Air microbial sampler using contact plates with calibration certificate	SAS Super Pinocchio II	1	710-0951
Air microbial sampler using Petri plates with calibration certificate	SAS Super Pinocchio II	1	710-0955

Description	Pk	Cat. No.
Accessories		
IQ-OQ-PQ manual	1	710-0976
Calibrated flow meter	1	710-0965
Flow meter, 20 – 200 LPM	1	710-1981



AIR SAMPLERS, SAS SUPER ISOLATOR

The SAS instrument control unit is placed outside and connected to the aspirating head using a simple electrical connection. All possible typical contamination sources of the vacuum sampling system are avoided using the SAS Super Isolator. An interesting application of this air sampler is that several heads can be controlled by a single SAS control unit providing a practical and economical solution.

- Operational flexibility, multiple language choice
- Records day, time, site, volume of air sampled, and operator's name
- Large back lit screen with intuitive menu; active operation status confirmed by flashing red LED

SAS Super Isolator instruments have been created for the specific monitoring of closed environments of isolators and RABS, ensuring their complete separation from outside influences.

For complete system, please order the sampler you require, a battery charger and the appropriate head.

Model	SAS Super Isolator 100	SAS Super Isolator 180	SAS Super Isolator 100	SAS Super Isolator 180	Duo SAS Super 360 Isolator
Airflow rate	100 l/min	180 l/min	100 l/min	180 l/min	2x180 l/min
Sampling head	Stainless steel				
WxDxH	105x110x290 mm				360x160x180 mm
Weight	1,75 kg				2,1 kg

Description	Model	Pk	Cat. No.
Sampler using contact plates	SAS Super Isolator 100	1	710-0943
Sampler using contact plates	SAS Super Isolator 180	1	710-0944
Sampler using Petri dishes	SAS Super Isolator 100	1	710-0945
Sampler using Petri dishes	SAS Super Isolator 180	1	710-0946
Air sampler with 2 aspirating heads using contact plates	Duo SAS Super 360 Isolator	1	710-0977
Air sampler with 2 aspirating heads using Petri dishes	Duo SAS Super 360 Isolator	1	710-0978

Description	Pk	Cat. No.
Accessories		
In-Out MH spare battery	1	710-0998
IQ-OQ-PQ manual	1	710-0954
Plug coupler	1	710-1980
Universal battery charger	1	710-0993
Battery charger, 110 V	1	710-1699
Extension cable (3 m)	1	710-0968
Sterile heads for Ø 55 mm contact plates	40	710-0890
Sterile heads for Ø 90 mm Petri dishes	40	710-0891
Stainless steel head and adapter	1	710-0877
Aluminum aspirating head for Ø 55 mm contact plates	1	710-0892
Stainless steel aspirating head for Ø 55 mm contact plates	1	710-0880
Aluminum aspirating head for Ø 90 mm Petri dishes	1	710-0886
Stainless steel aspirating head for Ø 90 mm Petri dishes	1	710-0878
Interface cable	1	710-0964
Software	1	710-0975
Remote control	1	710-0962
Aspirating chamber for contact plates, Ø 55 mm	1	710-0947
Adapter for Petri dishes Ø 90 mm	1	710-0882
Aspirating chamber for Petri dishes, Ø = 90 mm	1	710-0948
Fixed wall-type extension cable	1	710-1983
Lightweight aluminium carrying case	1	710-1697
Removable wall-type extension cable	1	710-1984
Battery charger with interchangeable plug, 90 – 260 V	1	710-0973



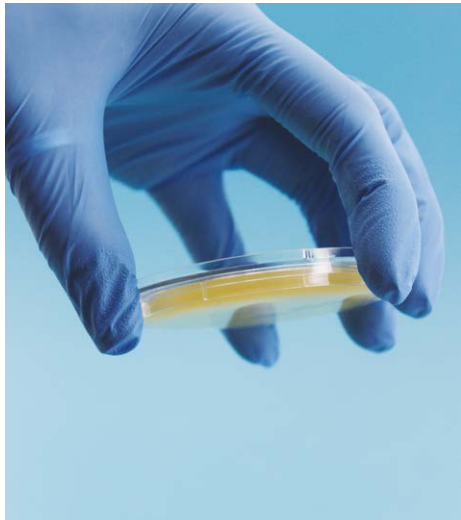
CONTACT PLATES, BLISTER PACKED, IRRADIATED

Available in two pack sizes - triple-wrapped (24 plate pack) and double-wrapped (30 plate pack). Plates are packed in a pack with six blisters. Each blister contains one plate so every time you open a compartment you use only one plate. Available with TLHTh disinfectant neutraliser (Tween®, lecithin, histidine, thiosulphate).

- Triple-wrapping ensures that the package itself doesn't contaminate the environment as the first wrapper is removed just before entering a clean area
- Available with certificate of irradiation/dosimetry
- VHP resistance studies available for all triple-wrapped plates
- Storage at room temperature

5×6 or 4×5×6 plate packs consist of 5 blister packs with an additional cellophane bag. 4×6 plate packs comprise of 4 blister packs with 2 additional cellophane bags. An irradiation indicator is featured on each blister.

Description	Standards	Filling	Pk	Cat. No.
Baird Parker agar blister double-wrapped	-	12 ml	30	250063UA
Baird Parker agar blister double-wrapped	-	12 ml	120	250063UAMP
Cetrimide agar blister double-wrapped	-	12 ml	30	250793ZI
MacConkey agar blister double-wrapped	-	12 ml	30	250641ZA
Malt extract agar blister double-wrapped	-	12 ml	30	250544ZI
Malt extract agar with chloramphenicol blister double-wrapped	-	12 ml	30	250542CA
Mannitol salt agar blister double-wrapped	-	12 ml	30	250560ZA
PCA blister triple-wrapped	EPA, ISO 4833	12 ml	24	250774ZI
PCA contact blister double-wrapped	EPA, ISO 4833	13 ml	30	250774ZI
PCA TLHTh blister double-wrapped	EPA, ISO 4833	12 ml	30	250774TI
PCA TLHTh blister triple-wrapped	EPA, ISO 4833	12 ml	24	270774TI
RBC agar blister double-wrapped	-	12 ml	120	250070ZIMP
Rose bengal chloramphenicol agar contact blister double-wrapped	-	13 ml	30	250070ZI
Sabouraud 4% dextrose agar contact blister double-wrapped	Harm Ph	13 ml	30	250884ZI
Sabouraud 4% dextrose agar contact blister TLHTh double-wrapped	Harm Ph	13 ml	30	250884TI
Sabouraud 4% dextrose agar contact blister TLHTh triple-wrapped	Harm Ph	13 ml	24	270884TI
Sabouraud 4% dextrose agar contact blister triple-wrapped	Harm Ph	13 ml	24	270884ZI
Sabouraud 4% dextrose Chloramphenicol agar blister double-wrapped	Harm Ph	12 ml	30	250884CY
Sabouraud 4% dextrose Chloramphenicol agar blister double-wrapped	Harm Ph	12 ml	120	250884CYMP
Sabouraud 4% dextrose chloramphenicol agar blister triple-wrapped	Harm Ph	12 ml	24	270884CY
TSA blister double-wrapped	Harm Ph	12 ml	120	251114ZIMP
TSA contact blister double-wrapped	Harm Ph	13 ml	30	251114ZI
TSA contact blister penase double-wrapped	Harm Ph	13 ml	30	251114PY
TSA contact blister penase TLHTh triple-wrapped	Harm Ph	13 ml	24	271114RY
TSA contact blister penase with neutralisers TLHTh double-wrapped	Harm Ph	13 ml	30	251114RY
TSA contact blister TLHTh triple-wrapped	Harm Ph	13 ml	24	271114TI
TSA contact blister triple-wrapped	Harm Ph	13 ml	24	271114ZI
TSA contact blister with neutralisers TLHTh double-wrapped	Harm Ph	13 ml	30	251114TI
TSA penase blister double-wrapped	Harm Ph	12 ml	120	251114PYMP
TSA penase TLHTh blister double-wrapped	Harm Ph	12 ml	120	251114RYMP
TSA with cycloheximide blister double-wrapped	Harm Ph	12 ml	30	251114AF
TSA with cycloheximide blister double-wrapped	Harm Ph	12 ml	120	251114AFMP
TSA with neutralisers TLHTh blister double-wrapped	Harm Ph	12 ml	120	251114TIMP
TSA with neutralisers TLHTh blister double-wrapped	Harm Ph	12 ml	30	251114SI
TSA with neutralisers TLHTh blister double-wrapped	Harm Ph	12 ml	120	251114SIMP
VRB agar blister double-wrapped	-	12 ml	30	251183ZA
VRB agar blister double-wrapped	-	12 ml	120	251183ZAMP
VRBG agar contact blister double-wrapped	ISO 5552	13 ml	30	251203ZA
VRBG-TLHTh blister double-wrapped	ISO 5552	12 ml	30	251203TA
VRBG-TLHTh blister double-wrapped	ISO 5552	12 ml	120	251203TAMP



CONTACT PLATES FOR SURFACE AND AIR CONTROL, IRRADIATED

Contact plates are ideal for monitoring the microbiological contamination of surface and air (using an air sampler) inside cleanrooms, isolators, RABS (Restricted Access Barrier), the food industry and hospitals. Triple wrapping ensures that the package itself does not contaminate the environment as the first wrapper is removed just before entering a clean area. Packaging of plates containing PCA is not irradiated.

- Plates packed in special triple-wrapped packaging with irradiation indicator
- Possibility of using PET, transparent, reusable container to transport plates to the laboratory after sampling
- Special packaging for good protection of the product during transport and storage
- Available with TLHTh (Tween®, lecithin, histidine, thiosulphate) disinfectant neutralisers
- Available with certificate of irradiation/dosimetry
- VHP resistance studies available for all triple-wrapped plates

Contains 8x10 triple-wrapped packs with a total of 80 plates. 8 PET, transparent, reusable containers are included.

Description	Standards	Filling	Pk	Cat. No.
PCA contact TLHTh triple-wrapped	-	13 ml	80	140774TI
PCA contact triple-wrapped	EPA, ISO 4833	13 ml	80	140774ZI
Rose bengal chloramphenicol agar contact triple-wrapped	-	13 ml	80	140070ZI
Sabouraud 4% dextrose agar contact TLHTh triple-wrapped	Ph. Eur., USP, JP	13 ml	80	140884TI
Sabouraud 4% dextrose agar contact triple-wrapped	Ph. Eur., USP, JP	13 ml	80	140884ZI
Sabouraud 4% dextrose with chloramphenicol triple-wrapped	Ph. Eur., USP, JP	13 ml	80	140884CY
TSA contact penase TLHTh triple-wrapped	Ph. Eur., USP, JP	13 ml	80	141114RY
TSA contact penase triple-wrapped	Ph. Eur., USP, JP	13 ml	80	141114PY
TSA contact TLHTh triple-wrapped	Ph. Eur., USP, JP	13 ml	80	141114TI
TSA contact triple-wrapped	Ph. Eur., USP, JP	13 ml	80	141114ZI
VRBG agar contact triple-wrapped	Ph. Eur., USP, JP	13 ml	80	151203ZA



designed for every day use

VWR®
for microbiological
environmental monitoring

Discover this
VWR Handy
Solution Guide
on vwr.com

- Hygiene and environmental monitoring
- Air samplers
- Contact plates
- Surface samplers
- Colony counting pen
- SAS instruments
- Media



READY TO USE MEDIA PLATES (90 MM), IRRADIATED

Available as 90 mm plates acc. to standards. TLHTh (Tween®, lecithin, histidine, thiosulphate) are used as disinfectant neutralisers. Bags are available double- or triple-wrapped. One pack per bag displays the irradiation indicator.

- Triple wrapping ensures that the package itself doesn't contaminate the environment as the first wrapper is removed just before entering a clean area
- Available with certificate of irradiation/dosimetry
- VHP resistance studies available for all triple-wrapped plates

Storage: 15 to 25 °C for the plates Cat. Nos. 280882TI, 280882ZI, 281112TI and 281112ZI; 2 to 14 °C for all the other plates.

The plates are packed 10 each in a plastic shrink-wrapped bag. Box contains 2 bags with a total of 20 or 6×10 plates.

Description	Filling	Standards	Pk	Cat. No.
Lethen modified agar double-wrapped	22 ml	FDA, USP	20	112750ZI
Lethen modified agar double-wrapped, multi-pack	22 ml	FDA, USP	120	112750ZIMP
PCA double-wrapped	22 ml	ISO 4833, 8552 and 17410 and IFU No. 6	20	110774ZI
PCA double-wrapped, multi-pack	22 ml	EPA, ISO 4833	120	110774ZIMP
R2A double-wrapped	22 ml	EPA	20	110802ZI
R2A double-wrapped, multi-pack	22 ml	-	120	110802ZIMP
R2A triple-wrapped	22 ml	EPA	20	130802ZI
R2A triple-wrapped, multi-pack	22 ml	-	120	130802ZIMP
Rose bengal chloramphenicol penase double-wrapped	20 ml	-	20	110070PY
Rose bengal chloramphenicol penase double-wrapped, multi-pack	20 ml	-	120	110070PYMP
Saboraud 4% dextrose agar (SDA) TLHTh triple wrapped	22 ml	HP, BAM, COMPF, ISO, EP, USP	60	280882TI
Saboraud 4% dextrose agar (SDA) triple wrapped	22 ml	HP, BAM, COMPF, ISO, EP, USP	60	280882ZI
Sabouraud 4% chloramphenicol agar double-wrapped	22 ml	HP, BAM, COMPF, ISO, EP, USP	20	110884CY
Sabouraud 4% chloramphenicol agar double-wrapped, multi-pack	22 ml	HP, BAM, COMPF, ISO, EP, USP	120	110884CYMP
Sabouraud 4% dextrose agar (SDA) with disinfectant neutraliser double-wrapped	22 ml	HP, BAM, COMPF, ISO, EP, USP	20	110884TI
Sabouraud 4% dextrose agar (SDA) with disinfectant neutraliser triple-wrapped, multi-pack	22 ml	HP, BAM, COMPF, ISO, EP, USP	120	110884TIMP
Sabouraud 4% dextrose agar double-wrapped	22 ml	Harm Ph	20	110884ZI
Sabouraud 4% dextrose agar double-wrapped, multi-pack	22 ml	Harm Ph	120	110884ZIMP
Sabouraud 4% dextrose agar triple-wrapped	22 ml	Harm Ph	20	130884ZI
Sabouraud 4% dextrose chloram agar triple wrapped	22 ml	Harm Ph	20	130884CY
TSA double-wrapped	22 ml	Harm Ph	20	111114ZI
TSA penase triple-wrapped	22 ml	Harm Ph	20	131114PY
TSA penase triple-wrapped, multi-pack	22 ml	Harm Ph	120	131114PYMP
TSA penase with neutralisers TLHTh double-wrapped	22 ml	Harm Ph	20	111114RY
TSA penase with neutralisers TLHTh double-wrapped, multi-pack	22 ml	Harm Ph	120	111114RYMP
TSA penase with neutralisers TLHTh triple-wrapped	22 ml	Harm Ph	20	131114RY
TSA penase with neutralisers TLHTh triple-wrapped, multi-pack	22 ml	Harm Ph	120	131114RYMP
TSA TLHTh + pyruvate triple-wrapped	22 ml	Harm Ph	20	131114XI
TSA TLHTh double-wrapped	22 ml	Harm Ph	20	111114TI
TSA TLHTh double-wrapped, multi-pack	22 ml	Harm Ph	120	111114TIMP
TSA TLHTh triple-wrapped	22 ml	Harm Ph	20	131114TI
TSA TLHTh triple-wrapped, multi-pack	22 ml	Harm Ph	120	131114TIMP
TSA TLHTh triple-wrapped, settle plate	22 ml	Harm Ph	60	281112TI
TSA TLHTh triple-wrapped, settle plate	30 ml	Harm Ph	60	281112TI30
TSA triple-wrapped	22 ml	Harm Ph	20	131114ZI
TSA triple-wrapped, settle plate	22 ml	Harm Ph	60	281112ZI
TSA tryptic soy agar, double-wrapped, multi-pack	22 ml	Harm Ph	120	111114ZIMP
TSA tryptic soy agar, triple-wrapped, multi-pack	22 ml	Harm Ph	120	131114ZIMP
Wort agar double-wrapped, multi-pack	22 ml	Harm Ph	120	112321TAMP
YGC agar double-wrapped, multi-pack	22 ml	Harm Ph	120	112230CAMP

Description	Pk	Cat. No.
Accessories		
Data logger - temperature service	1	499270OO



CONTACT PLATE WEIGHT APPLICATOR, CONTACT WEIGHT

Used in combination with contact plates, the contact weight enables the standardisation of microbiological surface control between operators. It applies the same constant pressure for a pre-set time on the contact plate. This ensures results are directly comparable. The contact weight meets the ISO 18593 Standard and has a sterilisable stainless steel base and pull-out digital timer.

- Dry heat or steam sterilisable stainless steel base with pull-out digital timer
- Can be used with different types of contact plates
- According to ISO 18593
- Weight 500 g

Description	Pk	Cat. No.
Contact plate applicator, Contact Weight	1	710-0961



SURFACE SAMPLING SPONGE KITS

Surface sampling sponges in two forms: Dry sponge sterile sampling bag with write-on strip containing a dry, biocide-free cellulose sponge or wet sponge sterile sampling bag with a foil-sealed, pre-moistened cellulose sponge, and 10 ml of sterile neutralising buffer.

- Sterilised using gamma irradiation and leakproof transport bags for the rapid cooling of samples in refrigerators
- Puncture-proof safety bags eliminating the sharp points that can cause puncture and/or abrasions
- Larger surface in comparison with normal sampling swabs

The surface sampling sponge kit is designed to collect and transport samples to detect the presence of microbiological contaminations such as Listeria, Salmonella, E. coli, and other foodborne pathogens on almost any surface. These kits are widely used in the food, medical, public health and cosmetic industries.

HACCP, USDA, ACIA and CFIA requirements.

Gloves should be worn during all sampling procedures.

Description	Pk	Cat. No.
Sampling sponges with buffer	100	300-0229
Dehydrated surface sampling sponges in a 450 ml bag	400	710-1020
Dehydrated surface sampling sponges in a 450 ml bag with gloves	400	710-0860
Surface sampling sponges pre-moistened with neutralising buffer	100	300-0230
Surface sampling sponges pre-moistened with Dey/Engley neutralising buffer	100	300-0231
Sterile transport bags and surface sampling sponges with handle pre-moistened with neutralising buffer	100	300-0232
Sterile transport bags and surface sampling sponges with handle pre-moistened with Dey/Engley neutralising buffer	100	300-0240



DIP SLIDES

Dip slides for microbiological monitoring of surfaces and in liquids. Each slide has media on both sides with a choice of the same medium or two different media on the two sides of the slide. This allows sampling of two surfaces with every slide. Testing with dip slides is a safe, reliable, economical and fast indicator of the presence of microorganisms. Dip slides, with a push cap, have a larger contact area.

- Supplied sterile
- Sampling takes only a few seconds
- The results are easily read after just 24 to 48 hours

Type	Contact area (cm ²)	Dimensions	Tray W×L (mm)	Paddle size (mm)
Push cap				
Push cap	10	30 mm tube, 110 mm high	50×22	80×28
Screw cap				
Screw cap	7	24 mm tube, 92 mm high	50×15	72×20

Description	Pk	Cat. No.
Push cap		
Baird-Parker, on both sides, for <i>Staphylococcus aureus</i>	10	535302D
Baird-Parker, on both sides, for <i>Staphylococcus aureus</i>	100	535303D
Baird-Parker and total count agar, for <i>Staphylococcus aureus</i>	10	535304D
Baird-Parker and total count agar, for <i>Staphylococcus aureus</i>	100	535305D
Baird-Parker and VRBG, for <i>Staphylococcus aureus</i> and Enterobacteriaceae	10	535308D
Malt extract agar, on both sides, for yeasts and moulds	10	535328D
Malt extract agar, on both sides, for yeasts and moulds	100	535329D
Nutrient agar and pseudomonas agar, for total count and <i>Pseudomonas</i>	10	535182R
Nutrient agar and pseudomonas agar, for total count and <i>Pseudomonas</i>	100	535184T
Nutrient agar with TTC, on both sides, for total count	10	535092Q
Nutrient agar with TTC and malt extract agar, for total count, yeasts and moulds	10	535102B
Nutrient agar with TTC and malt extract agar, for total count, yeasts and moulds	100	535104D
Nutrient agar with TTC and neutralisers, for total count	10	535309D
Nutrient agar with TTC and neutralisers, for total count	100	535310D
TSA with TTC and rose bengal agar, for total count, yeasts and moulds	10	535112D
TSA with TTC and rose bengal agar, for total count, yeasts and moulds	100	535114F
Plate count agar, on both sides, for total count	100	535124H
Plate count agar and MacConkey agar, for total count, <i>Salmonella</i> , <i>Shigella</i> and Coliform	10	535142J
Plate count agar and MacConkey agar, for total count, <i>Salmonella</i> , <i>Shigella</i> and Coliform	100	535144L
Plate count agar and OGYE agar with neutralisers, for total count, yeasts and moulds	10	535132H
Plate count agar and OGYE agar with neutralisers, for total count, yeasts and moulds	100	535134J
Plate count agar and VRBG, for <i>Staphylococcus aureus</i> and Enterobacteriaceae	10	535162N
Plate count agar and VRBG, for <i>Staphylococcus aureus</i> and Enterobacteriaceae	100	535164P
Plate count agar and VRBG with neutralisers, for <i>Staphylococcus aureus</i> and Enterobacteriaceae	10	535172P
Plate count agar and VRBG with neutralisers, for <i>Staphylococcus aureus</i> and Enterobacteriaceae	100	535174R
Plate count agar MacConkey agar with neutralisers, for total count, <i>Salmonella</i> , <i>Shigella</i> and Coliform	10	535152L
Plate count agar MacConkey agar with neutralisers, for total count, <i>Salmonella</i> , <i>Shigella</i> and Coliform	100	535154N
Plate count agar, on both sides, for total count	10	535122F
Plate count agar with neutralisers, on both sides, for total count	10	535324D
Plate count agar with neutralisers, on both sides, for total count	100	535325D
Plate count agar with TTC, on both sides, for total count	10	535311D
Plate count agar with TTC, on both sides, for total count	100	535312D
Plate count agar with TTC and MacConkey agar 3, for total count, <i>Salmonella</i> , <i>Shigella</i> and Coliform	100	535319D
Plate count agar with TTC and MacConkey agar 3, for total count, <i>Salmonella</i> , <i>Shigella</i> and Coliform	10	535318D
Plate count agar with TTC and MacConkey agar 3 with neutralisers, for total count, <i>Salmonella</i> , <i>Shigella</i> and Coliform	10	535316D
Plate count agar with TTC and MacConkey agar 3 with neutralisers, for total count, <i>Salmonella</i> , <i>Shigella</i> and Coliform	100	535317D
Plate count agar with TTC and neutralisers, on both sides, for total count	10	535313D
Plate count agar with TTC and neutralisers, on both sides, for total count	100	535314D
<i>Pseudomonas</i> CFC and MacConkey agar 3, for total count, <i>Salmonella</i> , <i>Shigella</i> and Coliform	10	535322D
<i>Pseudomonas</i> CFC and MacConkey agar 3, for total count, <i>Salmonella</i> , <i>Shigella</i> and Coliform	100	535323D
Rose bengal agar, for yeasts and moulds	10	535202E
Rose bengal agar, for yeasts and moulds	100	535204G
TSA with malt extract agar, on both sides, for yeasts and moulds	10	535320D
TSA with neutralisers, on both sides, for total count	10	535326D
TSA with neutralisers, on both sides, for total count	100	535327D
TSA with TTC and malt extract agar, for yeasts and moulds	100	535321D
VRBG agar, large, for Enterobacteriaceae	10	EX

Description	Pk	Cat. No.
Push cap		
VRBG agar, large, for Enterobacteriaceae	100	EC
Screw cap		
Nutrient agar TTC, on both sides, for total count	10	535306D
Nutrient agar TTC, on both sides, for total count	100	535307D



IGIENTEST HACCP

A simple quick test for hygiene control of work surfaces. Application fields: Food industry, catering, dairy industry, health authorities, HACCP consultants. A colorimetric scale to interpret the results is printed on each tube. The comparison between the solution colour and the colorimetric scale confirms if the surface is clean or dirty. It's enough to streak the wet swab on a surface and to insert the swab into the tube. Break the glass vial contained in the tube by using the clamp. At the end of the test the tube can be disposed of as normal waste. Room temperature storage.

- Quick - results in only 10 minutes
- Simple to use
- Easy interpretation

Description	Pk	Cat. No.
Igientest HACCP surface hygiene monitoring test	50 Tests	710-0895
Clamp to break the glass vials	1	710-0904



MEDIA FOR USE IN MEDIA FILL TEST

Validation of aseptic processing should include a simulation test using a nutrient medium, known as the media fill test or media simulation test. The selection of the nutrient medium should be made based on the quantity of the product produced and the selectivity, clarity, concentration and suitability for sterilisation of the nutrient medium. The process simulation test should imitate as closely as possible the routine aseptic manufacturing process and include all the critical subsequent manufacturing steps. Normally process simulation tests should be repeated twice a year per shift and process. The number of containers used for media fills should be sufficient to enable a valid evaluation. For small batches, the number of containers for media fills should at least equal the size of the product batch.

- Ready to use media saves time and decreases the risks associated with media preparation
- Sterility and fertility according to international requirements and guidelines for media fill validation

In compliance with BSE/TSE requirements.

Description	Filling	Pk	Cat. No.
TSB non animal origin, bottles and bags			
Media for media fill test, bottle	500 ml	500 ml	AX021416
Media for media fill test, bottle	1000 ml	1 l	AX0110086
Media for media fill test, bag with connectors	10000 ml	10 l	AX0110087
Media for media fill test, bag with connectors	20000 ml	20 l	AX0110088

Description	Filling	Standards	Size	Volume (ml)	Pk	Cat. No.
Culture media, ready to use, in bags						
Tryptone soy broth (TSB)		Harm Ph, ISO 9308-1		3000	3	801121ZB
Tryptone soy broth (TSB)		Harm Ph, ISO 9308-1		5000	2	851121ZB
Culture media, ready to use, in bottles						
TSB tryptic soy broth	100 ml	Harm Ph, ISO 9308-1	125 ml		10	301121ZA
TSB tryptic soy broth	200 ml	EP, ISO 9301-1, FDA, USP	250 ml		10	451121ZA
TSB tryptic soy broth	450 ml	EP, ISO 9301-1, FDA, USP	500 ml		10	561121ZA
TSB tryptic soy broth	450 ml	EP, ISO 9301-1, FDA, USP	500 ml		20	561121ZAMP

Services that help you achieve innovation faster

Science that improves the world is complex and ever-changing, and the demand for increased quality, productivity, and speed to market has never been greater.

You're never alone in finding ways to navigate forward, because we're behind you with the power of our experience, helping you see and achieve all that is possible. It's about realising possibilities.

Our portfolio of services include:

- On-site services
- Science as a service
- Clinical and biorepository services
- Inventory management solutions
- Market source procurement and sourcing services
- Equipment and instrument services
- Custom packaging and kitting
- Lean Six Sigma process consulting

Learn how to find more time for discovery. Download our Science as a Service white paper today at vwr.com/science_service

CleanPack® custom cleanroom packaging and irradiation services

CLEANPACK® – GAIN TIME FOR YOUR CORE PRODUCTION ACTIVITY

In ISO 5 and ISO 7 cleanrooms we handle and customise products complying with the highest standards to meet your special requirements:

- Cleaning of products that were not cleanroom compliant, and packaging for use in cleanrooms
- Customising existing cleanroom products to adapt them to your individual needs, e.g. sterilisation service, re-packaging of bulk products in smaller packing units or sizes, packing of single items to bulk packages, assembly of ready to use kits
- We guarantee reliable supply, and consistent quality at transparent cost
- Permanent implementation of a quality management system as per DIN EN ISO 9001:2008

PACKAGING AND IRRADIATION SERVICES

- Storage
- Re-packaging of bulk items into smaller packs
- Bulk packing of individual items
- Adding additional layers of packaging
- Assembly of ready to use kits
- Customised presentations, e.g. colour coded packaging
- Gamma irradiation or EtO service

For further information, or an offer tailored to your requirements, please contact us!

The cleanroom division of VWR part of Avantor.
kittingservices.eu@vwr.com



Visit **VWR.COM**

Bioprocessing facility support services



A **VWRCATALYST** Bioprocessing Specialist can help you tap the productivity of your pilot or manufacturing suites by reducing the burden of non core and routine scientific tasks. We deploy experienced professionals with degrees in biology, chemistry and engineering. All team members are full time **VWRCATALYST** associates.

Our specialists support upstream areas including cell culture, cell banking and on-site media/buffer preparation. We assist with facility set-ups and support process development. In downstream operations, our specialists assist with filtration, chromatography and routine analytical checks according to lab protocols.

UPSTREAM SUPPORT

- Large scale media and buffer preparation
- Cell banking
- Execute small scale process studies
- Maintain GMP lab records and Standard Operating Procedures (SOPs)
- Maintain lab and production supplies

DOWNSTREAM SUPPORT

- Operation of fixed tank systems
- Transport tanks and equipment to other production areas
- Pack and recycle chromatography equipment
- Perform routine analytical methods
- Equipment cleaning and sterilisation
- Maintain batch process records
- Freezer farm management of production-retained samples
- Waste handling, including single use

We offer managed services customised for the bioprocessing industry. Our mission is to enable the advancement of bioprocessing science throughout the world. We use process excellence to deliver what we promise, accelerate discovery plus scale-up and improve productivity for our customers.

Visit vwr.com/Science_Service to learn more

Learn more about why and how **VWRCATALYST**-supported companies, like yourself benefit, and what the results were.

Go to vwr.com/vwrcatalyst_success

VWR® single-use solutions

VWR Single-Use Solutions enable biopharmaceutical manufacturers to implement single-use technologies that reduce contamination risk, improve resource efficiency and lowers labour and energy costs. Our solution provides product choice, services and the expertise to help navigate through the various fluid-handling challenges, component options and quality and regulatory compliance constraints of the single-use world. At VWR, our goal is to help accelerate your scientific innovation by providing solutions that allow you to focus on your work and keep your production line running.

Through our Single-Use Solutions, we can help solve unique problems in all areas of a biopharmaceutical manufacturing operation. Our capabilities in customer single-use solutions include:

- Tanks and tank liners
- Ported pillow bags and bag mixing systems
- Bottle assemblies
- Hose and tubing manifolds
- Specialty connectors
- Standard and custom products
- Product development and prototyping



EXPERTISE

A COLLABORATIVE APPROACH TO DESIGNING YOUR SOLUTION

Fluid connectivity knowledge delivered through local single-use experts with direct application knowledge.

Proven single-use expertise in:

- Complete single-use manufacturing facilities
- Traditional stainless steel-based facilities
- Conversion from 'self-assembled' items

SERVICES

DESIGNED TO KEEP YOUR PRODUCTION LINE RUNNING

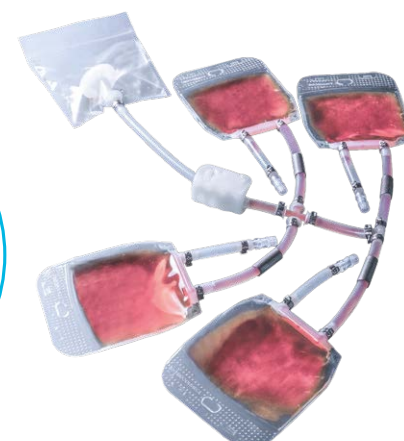
- Expedited design and approval process
- Drawings <3 days
- Complete validation packs in <3 days
- Unmatched global logistics and planning

CHOICE

ACCESS TO AN UNMATCHED PRODUCT PORTFOLIO

- Open architecture with components sourced from multiple suppliers
- Unbiased integrator with global reach
- 100+ standard products available to solve many typical bioprocess operations

To view our entire single-use range, please visit
[vwr.com/bioprocessing](https://www.vwr.com/bioprocessing)



Setting science in motion to create a better world

AUSTRIA

VWR International GmbH
Graumannsgasse 7
1150 Wien
Tel.: +43 1 97 002 0
info.at@vwr.com

BELGIUM

VWR International bvba
Researchpark Haasrode 2020
Geldenaaksebaan 464
3001 Leuven
Tel.: +32 (0) 16 385 011
vwr.be@vwr.com

CZECH REPUBLIC

VWR International s. r. o.
Veetee Business Park
Pražská 442
CZ - 281 67 Stříbrná Skalice
Tel.: +420 321 570 321
info.cz@vwr.com

DENMARK

VWR International A/S
Tobaksvej 21
2860 Søborg
Tel.: +45 43 86 87 88
info.dk@vwr.com

FINLAND

VWR International Oy
Valimotie 9
00380 Helsinki
Tel.: +358 (0) 9 80 45 51
info.fi@vwr.com

FRANCE

VWR International S.A.S.
Le Périgares – Bâtiment B
201, rue Carnot
94126 Fontenay-sous-Bois cedex
Tel.: 0 825 02 30 30* (national)
Tel.: +33 (0) 1 45 14 85 00 (international)
info.fr@vwr.com
* 0,18 € TTC/min

GERMANY

VWR International GmbH
Hilpertstraße 20a
D - 64295 Darmstadt
Tel.: 0800 702 00 07* (national)
Tel.: +49 (0) 6151 3972 0 (international)
info.de@vwr.com
*Freecall

HUNGARY

VWR International Kft.
Simon László u. 4.
4034 Debrecen
Tel.: +36 52 521130
info.hu@vwr.com

IRELAND / NORTHERN IRELAND

VWR International Ltd / VWR
International (Northern Ireland) Ltd
Orion Business Campus
Northwest Business Park
Ballycoolin
Dublin 15
Tel.: +353 (0) 1 88 22 222
sales.ie@vwr.com

ITALY

VWR International S.r.l.
Via San Giusto 85
20153 Milano (MI)
Tel.: +39 02 3320311
info.it@vwr.com

THE NETHERLANDS

VWR International B.V.
Postbus 8198
1005 AD Amsterdam
Tel.: +31 (0) 20 4808 400
info.nl@vwr.com

NORWAY

VWR International AS
Haavard Martinsens vei 30
0978 Oslo
Tel.: +47 22 90 00 00
info.no@vwr.com

POLAND

VWR International Sp. z o.o.
Limbowa 5
80-175 Gdansk
Tel.: +48 58 32 38 200
info.pl@vwr.com

PORTUGAL

VWR International - Material de
Laboratório, Lda
Centro Empresarial de Alfragide
Rua da Indústria, n° 6
2610-088 Alfragide
Tel.: +351 21 3600 770
info.pt@vwr.com

SPAIN

VWR International Eurolab S.L.
C/ Tecnología 5-17
A-7 Llinars Park
08450 - Llinars del Vallès
Barcelona
Tel.: +34 902 222 897
info.es@vwr.com

SWEDEN

VWR International AB
Fagerstagatan 18a
163 94 Stockholm
Tel.: +46 (0) 8 621 34 00
kundservice.se@vwr.com

SWITZERLAND

VWR International GmbH
Lerzenstrasse 16/18
8953 Dietikon
Tel.: +41 (0) 44 745 13 13
info.ch@vwr.com

UK

VWR International Ltd
Customer Service Centre
Hunter Boulevard - Magna Park
Lutterworth
Leicestershire
LE17 4XN
Tel.: +44 (0) 800 22 33 44
uksales@vwr.com

CHINA

VWR International China Co., Ltd.
Shanghai Branch
Room 256, No. 3058 Pusan Road
Pudong New District
Shanghai 200123
Tel.: +86 21 5898 6888
info_china@vwr.com

INDIA

VWR Lab Products Private Limited
No.139, BDA Industrial Suburb,
6th Main, Tumkur Road, Peenya Post,
Bangalore, India - 560058
Tel.: +91 80 28078400
vwr_india@vwr.com

SINGAPORE

VWR Singapore Pte Ltd
18 Gul Drive
Singapore 629468
Tel: +65 6505 0760
sales.sg@vwr.com

GO TO **VWR.COM** FOR THE LATEST NEWS, SPECIAL OFFERS AND DETAILS FROM YOUR LOCAL VWR SUPPORT TEAM