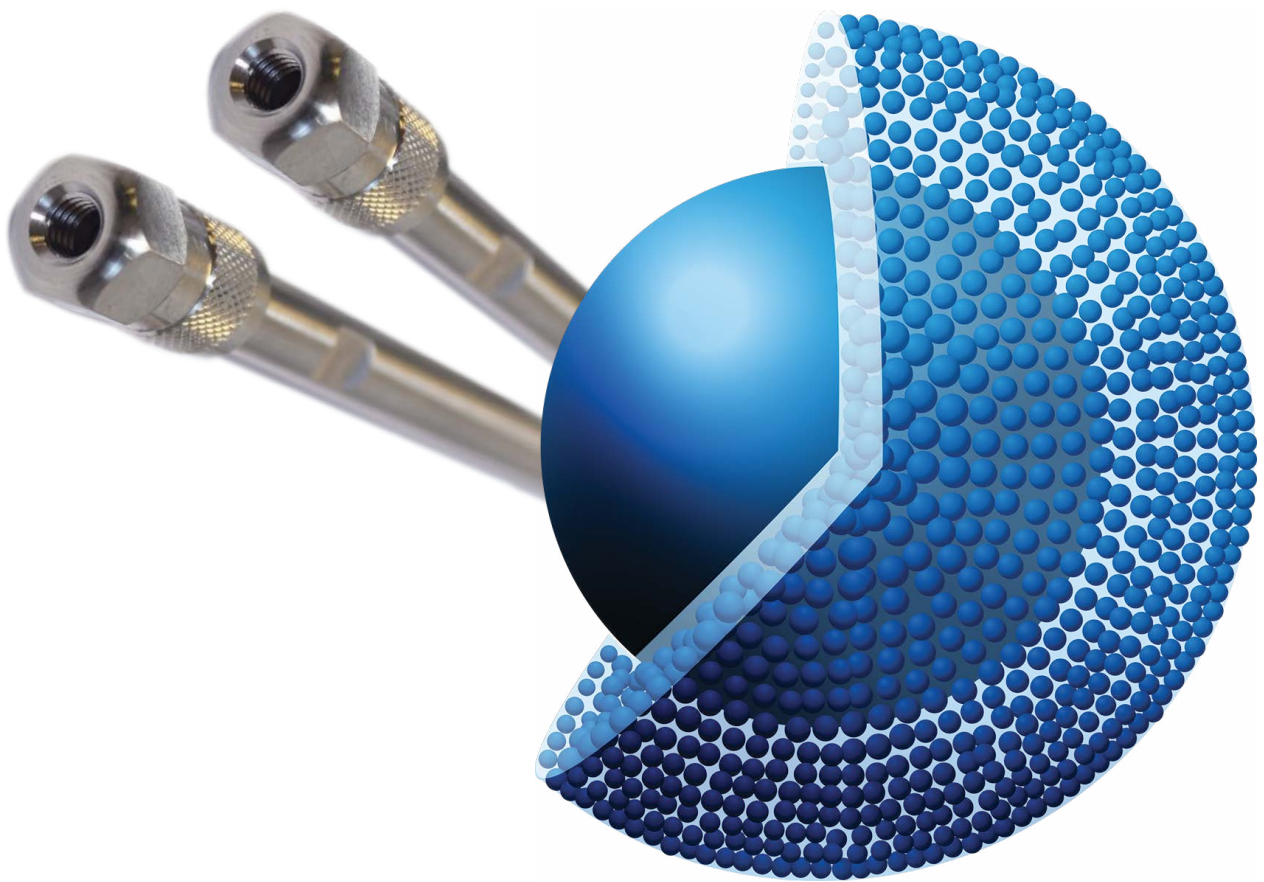


Chromatography Solutions

Avantor® ACE® UltraCore HPLC and UHPLC columns



Avantor® ACE® UltraCore

High throughput and high efficiency ultra-fast separations are achievable using Avantor® ACE® UltraCore – ultra-inert solid-core (core-shell) columns. Avantor® ACE® UltraCore columns utilise ultra-high purity solid-core silica with a monodisperse particle distribution to combine high efficiency with low backpressure. Achieve UHPLC-like performance using HPLC instrumentation with Avantor® ACE® UltraCore.

FASTER SEPARATION WITHOUT LOSS OF RESOLUTION

High efficiency separations comparable with sub-2 µm packings but lower back pressure. Ideal for a wide range of analytes differing in hydrophobicity.

Three product types within the range:

- UltraCore BIO for the separation of large, biologically derived molecules. Ideal for separating compounds with a molecular weight of 5 kDa and above.
- UltraCore for the separation of standard small organic molecules. Ideal for the fast separation of mixtures containing small organic molecules of either synthetic or natural origin.
- UltraCore Super featuring encapsulated bonding technology (EBT) for small organic molecules in extreme pH conditions. Ideal when high pH buffers are required.

ULTRACORE ADVANTAGE OVER FULLY POROUS MATERIAL (FPP)

Solid-core materials benefit from three key aspects;

- The size uniformity of the packing material means that it packs better, resulting in greater uniformity of the flow profile through the column.

- The dead volume in the column is reduced due to the solid-core, which significantly reduces the amount of longitudinal dispersion.
- Reduced mass transfer issues since the differential pathway between molecules entering the porous system and those that don't is substantially reduced.

This last phenomenon is exaggerated by higher flow rates and when using larger molecular weight molecules, due to their slower diffusion rates. Thus, using a silica particle with a solid-core is ideally suited to the analysis of biomolecules as it provides enhanced chromatographic performance coupled with the ability to run at elevated flow rates.

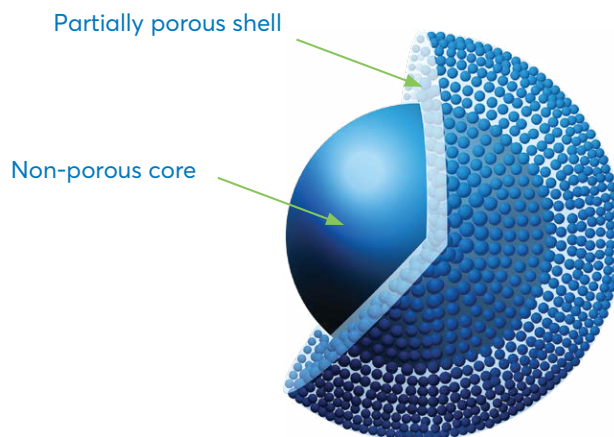


Figure 1: Schematic structure of a solid-core particle.

Biomolecule	Molecular weight kDa	Efficiency at 100 Å	Efficiency at 300 Å
Oxytocin Acetate	1.0072	234449	213719
Angiotensin I	1.2945	239231	203898
Angiotensin II	1.0642	349538	288695
Angiotensin III	1.1113	332637	269406
Bradykinin Acetate	1.060	106321	81543
Cytochrome C	12	245487	517929
Ribonuclease A	13.7	124969	154193
β-lactoglobulin	18.4	140722	280565
Ovalbumin	45	192084	324076
BSA	66.5	8551	33608

*NB comparison data collected using fully porous material to demonstrate effect of pore size change.

Table 1

Two different formats with the same bonded phase.

In addition to the 300 Å, 3.5 µm UltraCore particle, we offer a 500 Å, 2.5 µm UltraCore particle with a higher carbon load. This gives an alternative platform with, increased retention and greater loading capacity.

THE IMPORTANCE OF PORE SIZE

When working with larger molecules, typically from around 5 kDa in molecular weight to 150 kDa, it is important to make sure that the molecules have full access to all of the available stationary phase. Typical analytical HPLC phases have a pore size around 95 Å, and for smaller molecules which have a molecular weight

less than 1 kDa, the molecules have full accessibility to the stationary phase. However, as the molecular weight increases the accessibility decreases, with individual molecules having different levels of access to a pore, dependant on the individual pore size and also the orientation of the molecule. This results in a loss of chromatographic efficiency evident by broad peaks with a limited Gaussian structure. Eventually the size of the molecule will become too big to enter the pore structure, resulting in a substantial reduction in the accessible available surface area causing a reduction in the retention time. Biomolecules above 5 kDa are too large to be used with a 95 Å material, as can be seen in the table 1, where a loss of efficiency occurs as molecules struggle to access all of the available surface. The correct selection of column according to pore size makes a significant difference in the chromatographic efficiency and consequently the resolution for larger molecules.

With both 300 Å and 500 Å pore sizes available in the UltraCore BIO range, the optimum pore size can be chosen. These particle formats are ideally suited for the efficient separation of larger molecules over 5 kDa in molecular weight.

ULTRACORE BENEFITS FOR BIOLOGICAL MACROMOLECULE SEPARATION

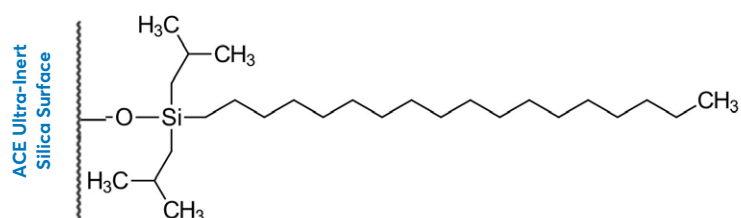
UltraCore particles are composed of a solid silica core, surrounded by a porous outer shell (Figure 1). Reduced mass transfer for large molecules using solid-core materials compared with a fully porous silica particles results in more efficient separations and increased analyte resolution.

UltraCore columns give a reduced peak width and therefore improved resolution when compared to a fully porous alternative.

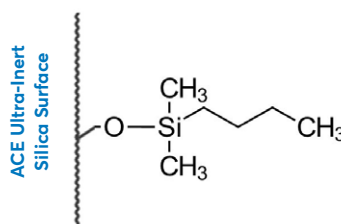
Avantor® ACE® UltraCore BIO for Biomolecules

PHASES AVAILABLE FOR AVANTOR® ACE® ULTRACORE BIO

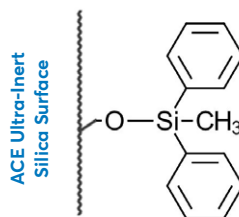
C18: Endcapped C18 phase, which can be used with 100% aqueous mobile phase. This is especially useful for the reversed-phase gradient separation of biologically derived compounds owing to the requirement for the start of the gradient often to be 0% organic. With excellent stability at low pH and high temperatures, these columns are ideal for the separation of a wide range of peptides and proteins.



C4: Reversed-phase material for separations requiring a stationary phase with lower hydrophobicity. This is an important phase for large proteins given that the net interaction caused by the hydrophobic interaction is often strong in such molecules. The butyl ligand is well established in RP protein applications. This phase is well suited to the analysis of hydrophobic proteins over 5 kDa molecular weight.



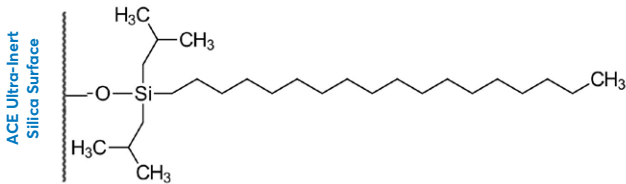
Phenyl2: Reversed-phase material in which π - π and hydrophobic interactions take place. This phase is similar in hydrophobicity to a C4 but given the different interaction of the phenyl groups, it displays a high degree of orthogonality to C18 and C4. It is a good choice if the required separation is not achieved on a C4 phase.



Phase Comparison Table

Phase	USP Listing	Functional group	End-capping	Particle size (μm)	Pore size (\AA)	Surface area (m^2/g)	Carbon load (%)	pH range
UltraCore BIO C18	L1	Octadecyl	Yes	3.5	300	16	1.0	1-8
UltraCore BIO C18	L1	Octadecyl	Yes	2.5	500	23	1.4	1-8
UltraCore BIO C4	L26	Butyl	Yes	3.5	300	16	0.4	2-9
UltraCore BIO C4	L26	Butyl	Yes	2.5	500	23	0.6	2-9
UltraCore BIO Phenyl2	L11	Diphenyl	Yes	3.5	300	16	0.7	2-9
UltraCore BIO Phenyl2	L11	Diphenyl	Yes	2.5	500	23	1.0	2-9

Avantor® ACE® UltraCore BIO C18



SEPARATION OF SMALL PROTEINS USING AN AVANTOR® ACE® ULTRACORE BIO C18 300Å

TESTING CONDITIONS:

Mobile Phase

A: Water + 0.1% TFA

B: 80% ACN/20% Water + 0.085% TFA

Gradient:

Time	%B
0.0	28.5
15.0	62.5
16.0	62.5
17.0	100
22.0	100

Wavelength:

215 nm

Injection:

5 µL Mix 1

Temperature:

60 °C

Flow Rate:

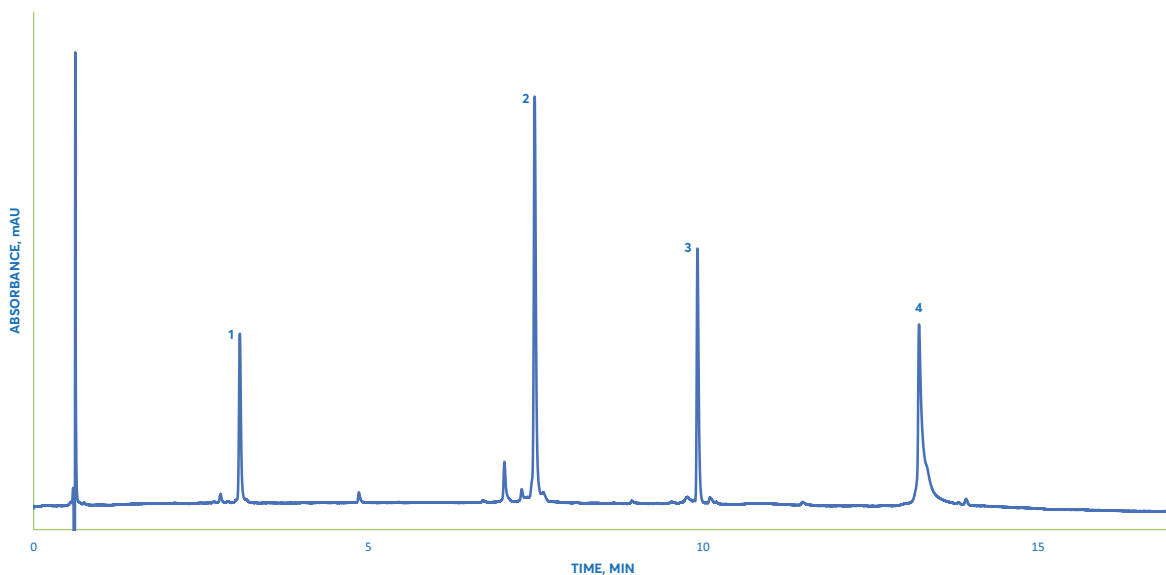
1.5 mL/min.

Column:

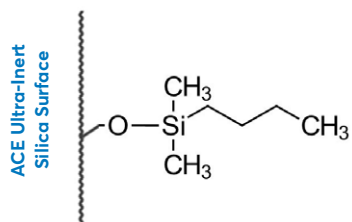
UltraCore BIO C18-300, 3.5 µm, 4.6 x 100 mm

Peak Number	Peak Identity	Retention Time	Molecular Weight (kDa)
1	Ribonuclease A	3.1	13.7
2	Lysozyme	7.5	14.3
3	Alpha-lactalbumin	9.9	14
4	Enolase	13.2	46

The C18 stationary phase with pore sizes of 300 Å is suitable for separation of proteins up to approximately 60 kDa. As seen here, it is ideal for the separation of proteins of approximately 14 kDa in size.



Avantor® ACE® UltraCore BIO C4

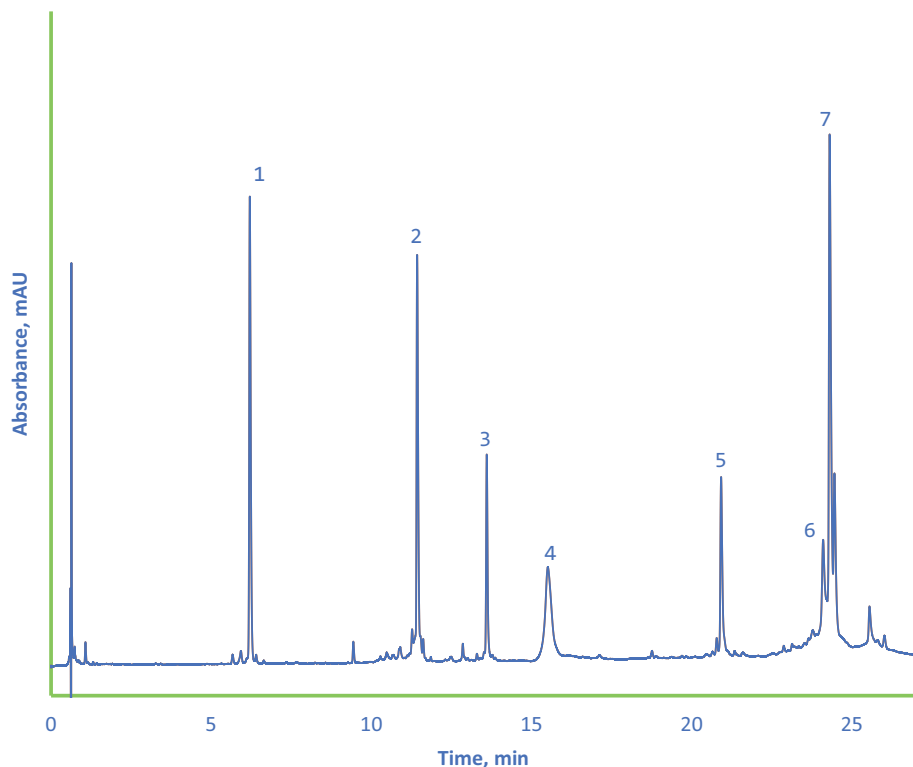


SEPARATION OF ENZYMES AND PROTEINS ON AN AVANTOR® ACE® ULTRACORE BIO C4

TESTING CONDITIONS:

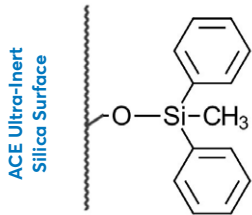
Mobile Phase	A: Water + 0.1% TFA
	B: 80% ACN/20% Water + 0.085% TFA
Gradient:	Time %B
	0.0 25
	25.0 57.5
	26.0 57.5
	27.0 100
	29.0 100
Wavelength:	220 nm
Injection:	5 µL Mix 1
Temperature:	60 °C
Flow Rate:	1.5 mL/min.
Column:	UltraCore BIO C4-300, 3.5 µm, 4.6 x 100 mm

The 300 Å pore size is ideal for the separation of small proteins. The chromatogram shows narrow peak widths, giving well resolved peaks. The C4 phase, with lower hydrophobicity than the C18, is particularly well suited to separations of this type.



Peak Number	Peak Identity	Retention Time
1	Ribonuclease A	6.2
2	Cytochrome c	11.4
3	Lysozyme	13.6
4	Holo-transferrin	15.5
5	Apomyoglobin	20.9
6	Enolase	24.1
7	Carbonic Anhydrase	24.3

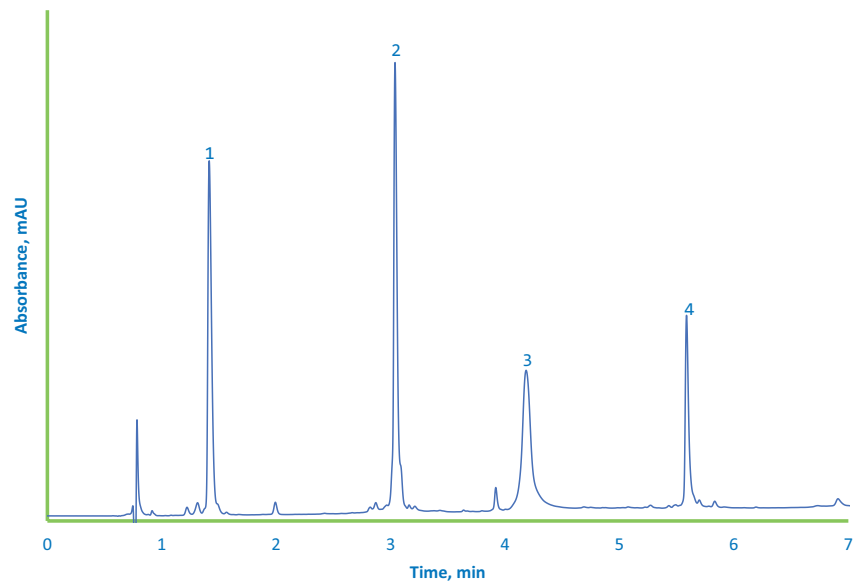
Avantor® ACE® UltraCore BIO Phenyl2



SEPARATION OF 4 PROTEINS TO SHOW SUPERIOR PERFORMANCE OF THE PHENYL2 PHASE

TESTING CONDITIONS:

Mobile Phase	A: Water + 0.1% TFA
	B: 80% ACN/20% Water + 0.085% TFA
Gradient:	Time %B
	0.0 31
	7.0 60
	8.0 60
Wavelength:	220 nm
Injection:	3 µL Mix 1
Temperature:	60 °C
Flow Rate:	0.4 mL/min.
Column:	UltraCore BIO Phenyl2-300, 3.5 µm, 2.1 x 150 mm



Peak Number	Peak Identity	Retention Time
1	Ribonuclease A	1.4
2	Cytochrome c	3.0
3	Holo-transferrin	4.1
4	Apomyoglobin	5.6

The chromatogram shows the superior performance of the phenyl phase. It is clearly demonstrated how very fast, high efficiency separations can be achieved for the separation of biomolecules using a column of this type.

Avantor® ACE® UltraCore BIO

RETENTION OF TRASTUZUMAB SHOWING 3 OVERLAID CHROMATOGRAMS COMPARING RETENTION TIMES ACROSS THREE DIFFERENT PHASES ON 500 Å ULTRACORE SILICA.

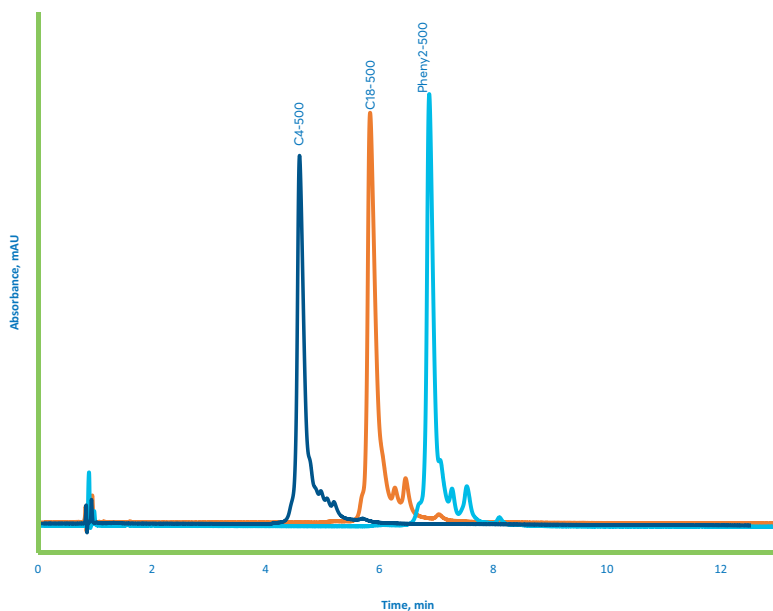
TESTING CONDITIONS:

Mobile Phase **A:** Water + 0.1% TFA
B: 80% ACN/20% Water + 0.085% TFA

Gradient: Time	%B	Total Flow (mL/min)
0.0	40.0	0.4
12.0	47.5	0.4
12.5	47.5	0.4
13.0	100	0.4
13.5	100	0.7
16.0	100	0.7

Wavelength: 280 nm
 Injection: 2 µL Trastuzumab
 Temperature: 80 °C
 Flow Rate: 0.4 mL/min.

Retention Time (min)	Column
4.7	UltraCore BIO C4-500, 2.5 µm, 2.1 x 150 mm
5.8	UltraCore BIO C18-500, 2.5 µm, 2.1 x 150 mm
6.8	UltraCore BIO Phenyl2-500, 2.5 µm, 2.1 x 150 mm



500 Å is a suitable pore size for the reversed-phase separation of antibodies of approximately 150 kDa in molecular weight. The 500 Å pore size retains the mAb well and a difference can clearly be observed when comparing the three different stationary phases. This is a useful tool to enable clear separation of the protein of interest from any similar compounds such as mAb fragments or impurities with similar retention.

All 300 Å phases have HPLC hardware with 600 bar (9000 psi) pressure limit. 500 Å columns have HPLC/UHPLC hardware with 600 bar (9000 psi) pressure limit for 4.6 mm ID or 1000 bar (14,500 psi) for 2.1 and 3.0 mm ID

ORDERING TABLE ULTRACORE BIO:

Dimensions	300 Å, 3.5 µm			500 Å, 2.5 µm		
	C18	C4	Phenyl2	C18	C4	Phenyl2
2.1 x 50 mm	BIO-350-0521	BIO-351-0521	BIO-352-0521	BIO-250-0521	BIO-251-0521	BIO-252-0521
2.1 x 100 mm	BIO-350-1021	BIO-351-1021	BIO-352-1021	BIO-250-1021	BIO-251-1021	BIO-252-1021
2.1 x 150 mm	BIO-350-1521	BIO-351-1521	BIO-352-1521	BIO-250-1521	BIO-251-1521	BIO-252-1521
3.0 x 50 mm	BIO-350-0530	BIO-351-0530	BIO-352-0530	BIO-250-0530	BIO-251-0530	BIO-252-0530
3.0 x 100 mm	BIO-350-1030	BIO-351-1030	BIO-352-1030	BIO-250-1030	BIO-251-1030	BIO-252-1030
3.0 x 150 mm	BIO-350-1530	BIO-351-1530	BIO-352-1530	BIO-250-1530	BIO-251-1530	BIO-252-1530
4.6 x 50 mm	BIO-350-0546	BIO-351-0546	BIO-352-0546	BIO-250-0546	BIO-251-0546	BIO-252-0546
4.6 x 100 mm	BIO-350-1046	BIO-351-1046	BIO-352-1046	BIO-250-1046	BIO-251-1046	BIO-252-1046
4.6 x 150 mm	BIO-350-1546	BIO-351-1546	BIO-352-1546	BIO-250-1546	BIO-251-1546	BIO-252-1546
Guard cartridges (3pk)	BIO-350-521G	BIO-351-521G	BIO-352-521G	BIO-250-521G	BIO-251-521G	BIO-252-521G
Guard cartridges (3pk)	BIO-350-530G	BIO-351-530G	BIO-352-530G	BIO-250-530G	BIO-251-530G	BIO-252-530G
Guard cartridges (3pk)	BIO-350-546G	BIO-351-546G	BIO-352-546G	BIO-250-546G	BIO-251-546G	BIO-252-546G

* Guard cartridges require guard holder BIO-GRD-0001

Avantor® ACE® UltraCore for Small Molecules

The use of solid-core particles is well established, but has really gained prominence in recent years as they are able to generate higher efficiencies than comparably sized fully porous particles and show less of a performance drop-off at higher flow rates. This has been especially utilised in the small molecule application area.

The Avantor® ACE® UltraCore 95 Å range offers;

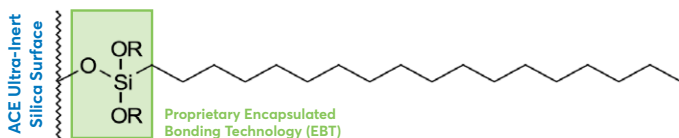
- High purity, base-deactivated silica with excellent reproducibility
- 2.5 µm solid-core particles, which give comparable efficiencies to sub 2 µm FPP with the advantage of lower back pressure
- 5 µm solid-core particles which can be used to replace 5 µm FPPs of the same chemistry to significantly increase separation speed and improve sample throughput
- 3.5 µm solid-core particles offering sub-3 µm FPP efficiencies and are available in alternative selectivities for method development

Avantor® ACE® UltraCore SuperC18 & SuperPhenylHexyl

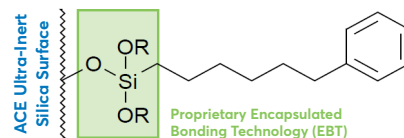
- Ultra-inert solid-core particles
- SuperC18 and SuperPhenylHexyl phases – with complementary selectivity for method development over a wide pH range
- Extended pH range 1.0–11.0
- Designed for LC-MS applications

Phase	USP Listing	Functional group	End-capping	Particle size (µm)	Pore size (Å)	Surface area (m ² /g)	Carbon load (%)	pH range
UltraCore SuperC18	L1	Octadecyl	Encapsulated	2.5	95	130	7.0	1.5-11
				5		100	5.4	
UltraCore SuperPhenylHexyl	L11	Phenyl-Hexyl	Encapsulated	2.5	95	130	4.6	1.5-11
				5		100	3.6	

SuperC18

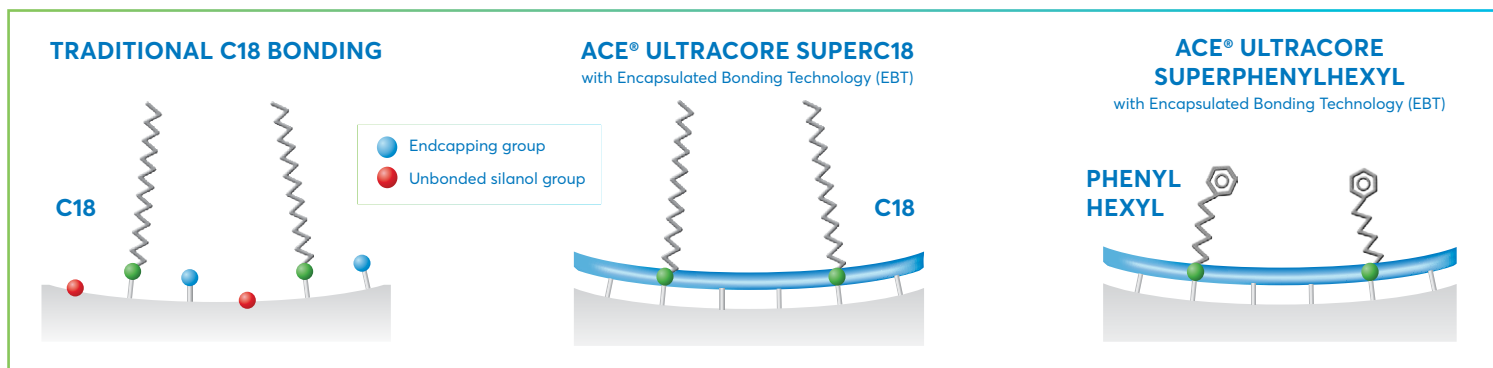


SuperPhenylHexyl



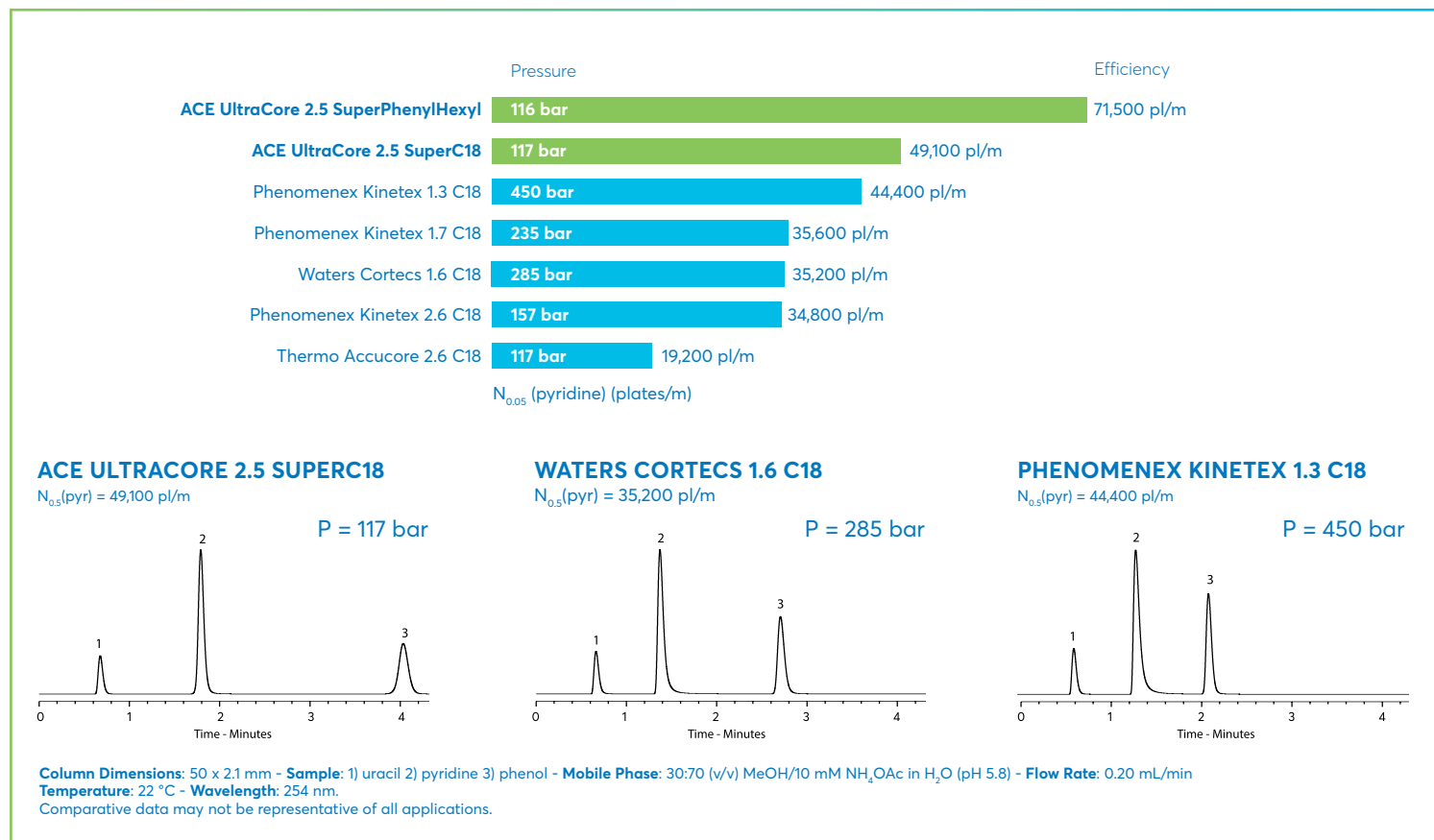
AVANTOR® ACE® ULTRACORE

Avantor® ACE® UltraCore SuperC18 and SuperPhenylHexyl phases are manufactured using our unique Encapsulated Bonding Technology (EBT). This technology dramatically increases ligand coverage of the silica surface and effectively eliminates the negative effects of unbonded silanol groups. The higher ligand coverage results in improved inertness, chromatographic performance and stability.



Avantor® ACE® UltraCore columns are highly inert.

- Solid-core columns from leading manufacturers investigated
- Comparison of column efficiency for pyridine – a basic molecule



EXAMPLE APPLICATIONS

- Water-soluble vitamins using UltraCore SuperPhenylHexyl
- Tryptic digest of BSA using 3 x coupled UltraCore SuperC18 columns

ACE ULTRACORE 2.5 SUPERPHENYLHEXYL

Column Dimensions: 50 x 2.1 mm, 2.5 µm

Gradient analysis

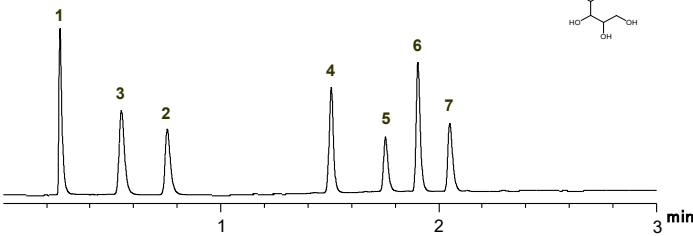
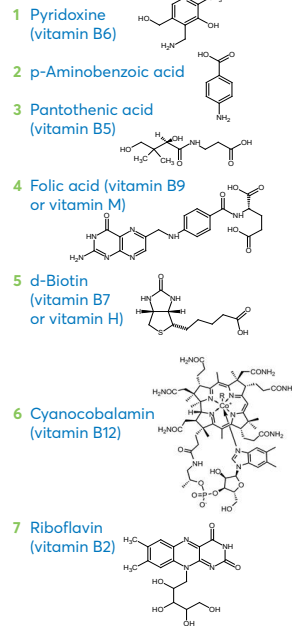
Mobile Phase: A: 20 mM KH₂PO₄ pH 2.7 (aq)
B: 20 mM KH₂PO₄ pH 2.7 in MeOH:Water 50:50 v/v

Time (mins)	%B
0	20
1	60
2	70

Flow Rate: 0.60 mL/min

Temperature: 40 °C

Detection: 205 nm



ACE ULTRACORE 2.5 SUPERC18

Column Dimensions: (3x) 150 x 2.1 mm

Mobile Phase: A: 0.05% TFA in H₂O
B: 0.05% TFA in MeCN

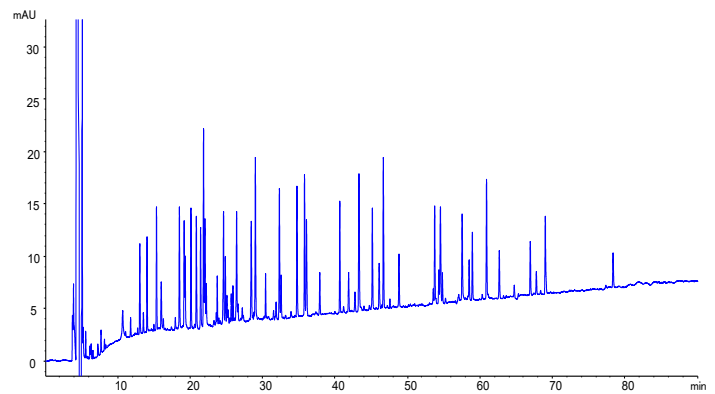
Gradient: 10 to 40% B in 90 mins

Flow Rate: 0.21 mL/min

Injection: 20 µL

Temperature: 60 °C

Detection: UV, 214 nm



ORDERING INFORMATION

Avantor® ACE® Ultracore 2.5 µm particle sizes

HPLC/UHPLC hardware format with 1,000 bar / 15,000 psi pressure limit

Column dimensions	SuperC18	SuperPhenylHexyl
2.1 x 50 mm	CORE-25A-0502U	CORE-25B-0502U
2.1 x 75 mm	CORE-25A-7502U	CORE-25B-7502U
2.1 x 100 mm	CORE-25A-1002U	CORE-25B-1002U
2.1 x 125 mm	CORE-25A-1202U	CORE-25B-1202U
2.1 x 150 mm	CORE-25A-1502U	CORE-25B-1502U
3.0 x 50 mm	CORE-25A-0503U	CORE-25B-0503U
3.0 x 75 mm	CORE-25A-7503U	CORE-25B-7503U
3.0 x 100 mm	CORE-25A-1003U	CORE-25B-1003U
3.0 x 125 mm	CORE-25A-1203U	CORE-25B-1203U
3.0 x 150 mm	CORE-25A-1503U	CORE-25B-1503U
4.6 x 50 mm	CORE-25A-0546U	CORE-25B-0546U
4.6 x 75 mm	CORE-25A-7546U	CORE-25B-7546U
4.6 x 100 mm	CORE-25A-1046U	CORE-25B-1046U
4.6 x 125 mm	CORE-25A-1246U	CORE-25B-1246U
4.6 x 150 mm	CORE-25A-1546U	CORE-25B-1546U
Guards for 2.1 & 3.0 mm id columns (3 pk)*	CORE-A-GD2U	CORE-B-GD2U
Guards for 4.6 mm id columns (3 pk)*	CORE-A-GD4U	CORE-B-GD4U

*Guards require holder H0011

Avantor® ACE® UltraCore 5 µm particle sizes

HPLC/UHPLC hardware format with 1,000 bar / 15,000 psi pressure limit

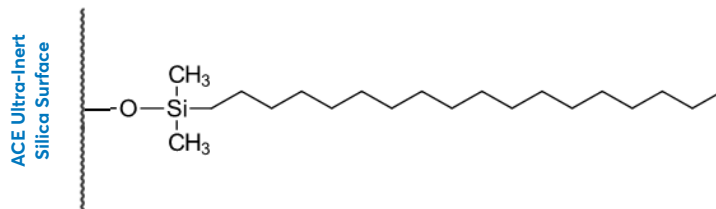
Column dimensions	SuperC18	SuperPhenylHexyl
2.1 x 50 mm	CORE-5A-0502U	CORE-5B-0502U
2.1 x 75 mm	CORE-5A-7502U	CORE-5B-7502U
2.1 x 100 mm	CORE-5A-1002U	CORE-5B-1002U
2.1 x 125 mm	CORE-5A-1202U	CORE-5B-1202U
2.1 x 150 mm	CORE-5A-1502U	CORE-5B-1502U
2.1 x 250 mm	CORE-5A-2502U	CORE-5B-2502U
3.0 x 50 mm	CORE-5A-0503U	CORE-5B-0503U
3.0 x 75 mm	CORE-5A-7503U	CORE-5B-7503U
3.0 x 100 mm	CORE-5A-1003U	CORE-5B-1003U
3.0 x 125 mm	CORE-5A-1203U	CORE-5B-1203U
3.0 x 150 mm	CORE-5A-1503U	CORE-5B-1503U
3.0 x 250 mm	CORE-5A-2503U	CORE-5B-2503U
4.6 x 50 mm	CORE-5A-0546U	CORE-5B-0546U
4.6 x 75 mm	CORE-5A-7546U	CORE-5B-7546U
4.6 x 100 mm	CORE-5A-1046U	CORE-5B-1046U
4.6 x 125 mm	CORE-5A-1246U	CORE-5B-1246U
4.6 x 150 mm	CORE-5A-1546U	CORE-5B-1546U
4.6 x 250 mm	CORE-5A-2546U	CORE-5B-2546U
Guards for 2.1 & 3.0 mm id columns (5 pk)*	CORE-A-0102GD	CORE-B-0102GD
Guards for 2.1 & 3.0 mm id columns (5 pk)*	CORE-A-0103GD	CORE-B-0103GD

*For use at HPLC pressures. Guards require holder H0001 & Coupler C0001

Avantor® ACE® UltraCore C18

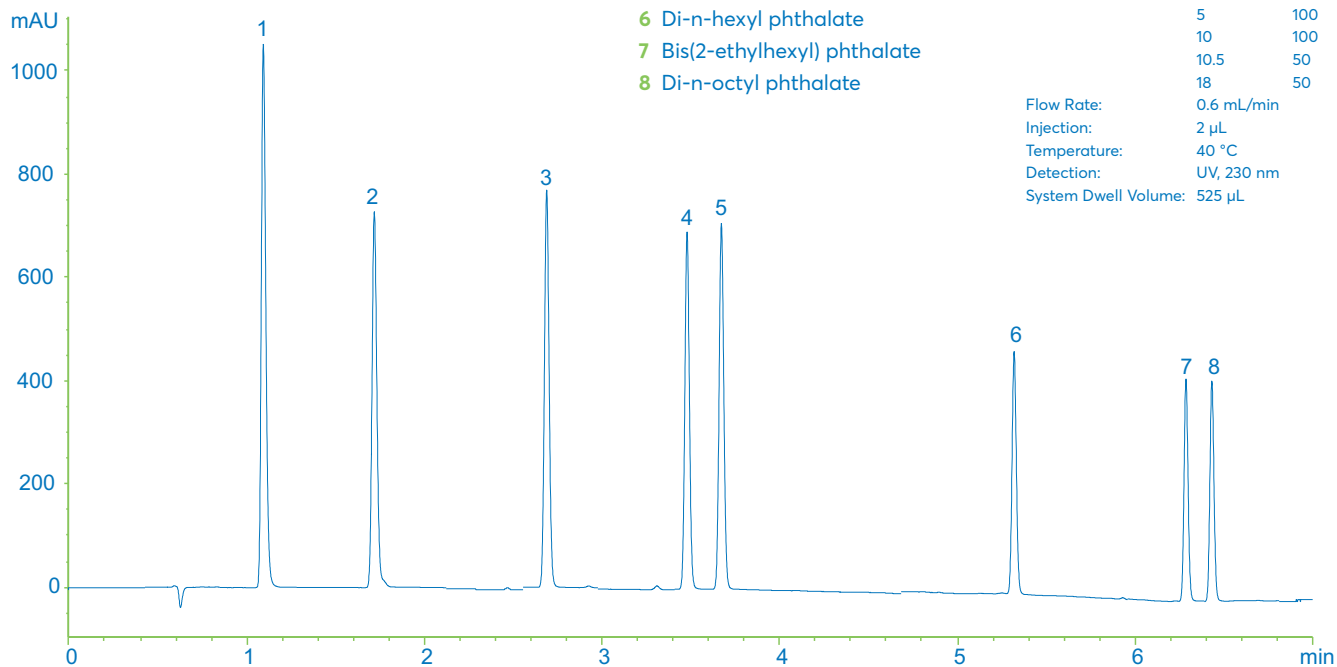
This densely bonded octadecyl phase can be used to separate acidic, basic and neutral molecules, based on hydrophobic retention mechanisms. Often known as the workhorse stationary phase, it can be utilised for common application areas where high sensitivity is required.

- High efficiency separations comparable with sub-2 µm packings but lower back pressure
- Ideal for a wide range of analytes differing in hydrophobicity



Phase	USP Listing	Functional group	Endcapping	Particle size (µm)	Pore size (Å)	Surface area (m ² /g)	Carbon load (%)	Low pH/T limit	High pH/T limit	100% aqueous compatible
UltraCore C18	L1	Octadecyl	Yes	3.5	95	115	8.2	2/60°C	9/40°C	No

SEPARATION OF PHTHALATES



- 1 Dimethyl phthalate
- 2 Diethyl phthalate
- 3 Di-n-propyl phthalate
- 4 Benzyl butyl phthalate
- 5 Di-n-butyl phthalate
- 6 Di-n-hexyl phthalate
- 7 Bis(2-ethylhexyl) phthalate
- 8 Di-n-octyl phthalate

TESTING CONDITIONS

Column: UltraCore C18
 Dimensions: 100 x 3.0 mm
 Mobile Phases: A: 0.1% Formic acid in H₂O
 B: 0.1% Formic acid in MeCN
 Gradient:

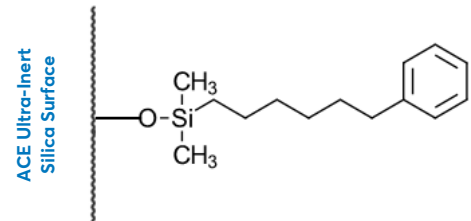
Time (mins)	%B
0	50
5	100
10	100
10.5	50
18	50

 Flow Rate: 0.6 mL/min
 Injection: 2 µL
 Temperature: 40 °C
 Detection: UV, 230 nm
 System Dwell Volume: 525 µL

Avantor® ACE® UltraCore Phenylhexyl

The Phenylhexyl phase is especially well suited for retention of aromatic compounds where π - π interactions can be exploited.

- Ideal for analytes with π -bonding
- Complementary selectivity to other UltraCore bonded phases

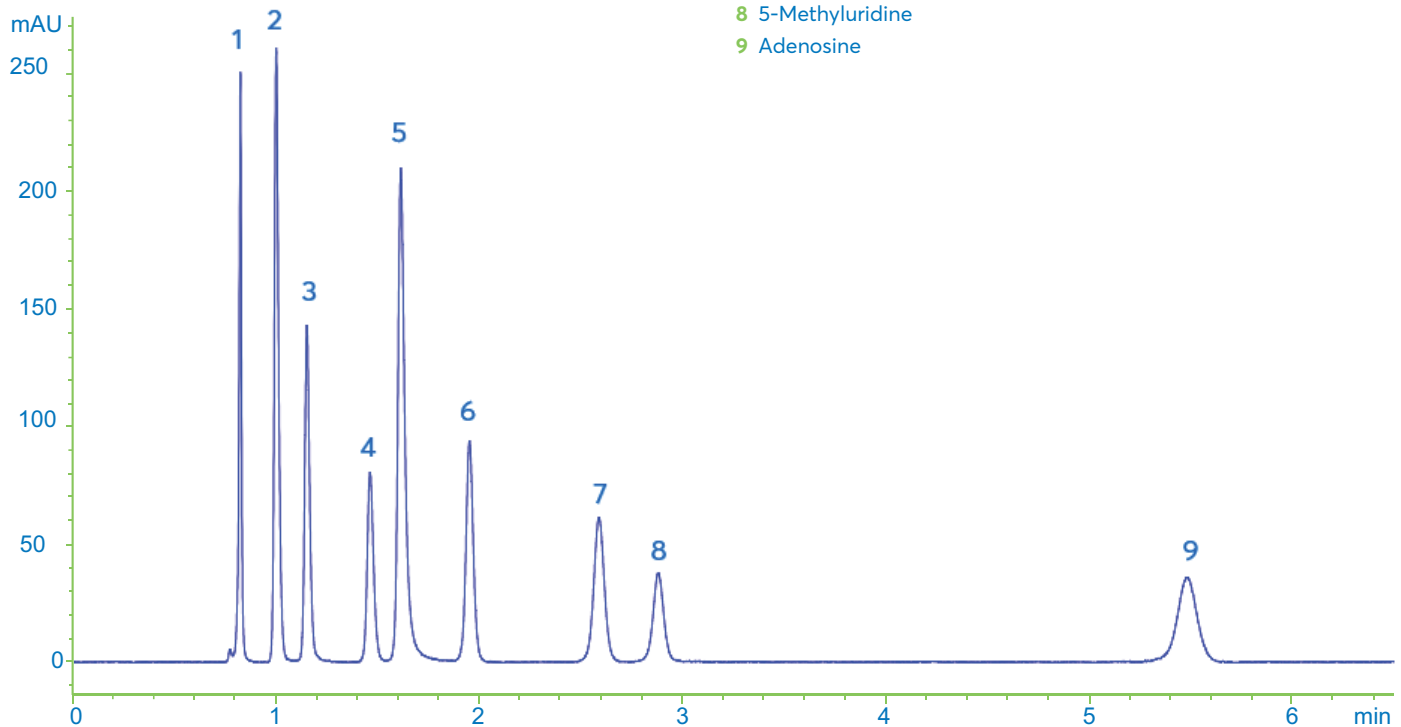


Phase	USP Listing	Functional group	End-capping	Particle size (μm)	Pore size (\AA)	Surface area (m^2/g)	Carbon load (%)	Low pH/T limit	High pH/T limit	100% aqueous compatible
UltraCore Phenylhexyl	L11	Phenylhexyl	Yes	3.5	95	115	6.2	2/60°C	9/40°C	Yes

SEPARATION OF NUCLEOSIDES & NUCLEOBASES

- 1 Cytosine
- 2 Uracil
- 3 Guanine
- 4 Uridine
- 5 Adenine
- 6 Thymine
- 7 Guanosine
- 8 5-Methyluridine
- 9 Adenosine

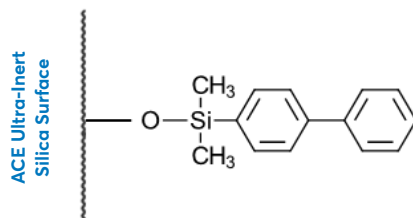
Column: UltraCore 3.5 Phenylhexyl
 Dimensions: 100 x 3.0 mm
 Mobile Phase: 10 mM ammonium formate pH 4.2 in H_2O
 Flow Rate: 0.6 mL/min
 Injection: 3 μL
 Temperature: 40 °C
 Detection: UV, 254 nm



Avantor® ACE® UltraCore Biphenyl

This biphenyl phase is especially well suited for retention of aromatic compounds that elute early on alkyl phases.

- Ideal for analytes with π -bonding, electron withdrawing or delocalised groups
- Alternative selectivity to alkyl phases and traditional phenyl phases

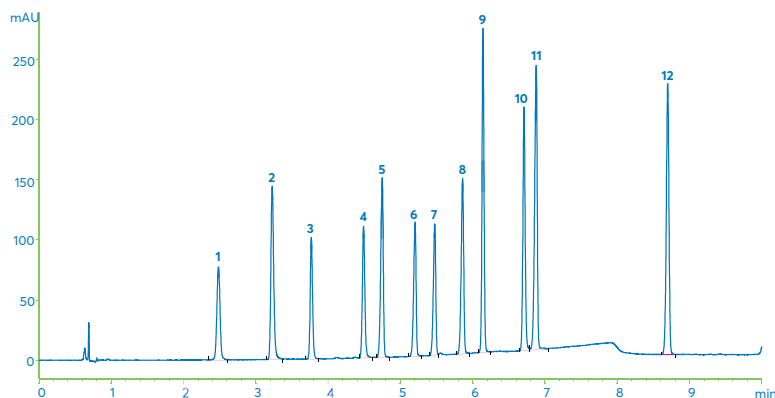


Phase	USP Listing	Functional group	End-capping	Particle size (μm)	Pore size (\AA)	Surface area (m^2/g)	Carbon load (%)	Low pH/T limit	High pH/T limit	100% aqueous compatible
UltraCore Biphenyl	L11	Biphenyl	Yes	3.5	95	115	6.5	2/60°C	9/40°C	Yes

SEPARATION OF BENZIMIDAZOLES

Column: UltraCore 3.5 Biphenyl
 Dimensions: 100 x 3.0 mm
 Mobile Phases: A: 20 mM KH_2PO_4 pH 6.5 in H_2O
 B: 20 mM KH_2PO_4 pH 6.5 in $\text{MeCN}/\text{H}_2\text{O}$
 70:30 v/v

Gradient:	Time (mins)	%B
	0	25
	10	100
	12	100
	13	25
	20	25



- 1 Carbendazim
- 2 Thiabendazole
- 3 Amino Mebendazole
- 4 Cambendazole
- 5 Oxibendazole
- 6 Mebendazole
- 7 Flubendazole
- 8 Albendazole
- 9 Triclabendazole Sulphone
- 10 Triclabendazole Sulphoxide
- 11 Fenbendazole
- 12 Triclabendazole

ORDERING INFORMATION

Avantor® ACE® Ultracore 3.5 μm particle sizes

HPLC hardware format with 600 bar / 9,000 psi pressure limit

Column dimensions	C18	Phenylhexyl	Biphenyl
2.1 x 50 mm	CORE-35F-521	CORE-35G-521	CORE-35D-521
3.0 x 50 mm	CORE-35F-530	CORE-35G-530	CORE-35D-530
4.6 x 50 mm	CORE-35F-546	CORE-35G-546	CORE-35D-546
2.1 x 100 mm	CORE-35F-1021	CORE-35G-1021	CORE-35D-1021
3.0 x 100 mm	CORE-35F-1030	CORE-35G-1030	CORE-35D-1030
4.6 x 100 mm	CORE-35F-1046	CORE-35G-1046	CORE-35D-1046
2.1 x 150 mm	CORE-35F-1521	CORE-35G-1521	CORE-35D-1521
3.0 x 150 mm	CORE-35F-1530	CORE-35G-1530	CORE-35D-1530
4.6 x 150 mm	CORE-35F-1546	CORE-35G-1546	CORE-35D-1546

HPLC hardware format with 600 bar / 9,000 psi pressure limit

Column dimensions	C18	Phenylhexyl	Biphenyl
Guards (for 2.1 mm id columns) 3 pk*	CORE-35F-21GD	CORE-35G-21GD	CORE-35D-21GD
Guards (for 3.0 mm id columns) 3 pk*	CORE-35F-30GD	CORE-35G-30GD	CORE-35D-30GD
Guards (for 4.6 mm id columns) 3 pk*	CORE-35F-46GD	CORE-35G-46GD	CORE-35D-46GD

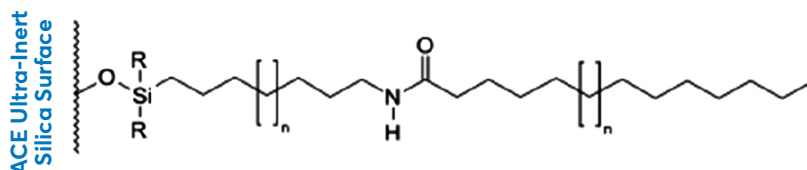
*Guards require holder BIO-GRD-0001

For any application support or additional questions please contact chromsupport@avantorsciences.com

Avantor® ACE® UltraCore C18-Amide

The C18-Amide phase incorporates additional mechanisms of interaction such as H-bonding to give an alternative selectivity for moderately polar analytes.

- Can retain more polar compounds in 100% aqueous mobile phase
- Alternative selectivity to alkyl phases



Phase	USP Listing	Functional group	End-capping	Particle size (µm)	Pore size (Å)	Surface area (m ² /g)	Carbon load (%)	Low pH/T limit	High pH/T limit	100% aqueous compatible
UltraCore C18-Amide	L60	Polar Embedded Amide	Yes	3.5	95	120	5.5	2/60°C	9/40°C	Yes

SEPARATION OF PHENOLIC COMPOUNDS

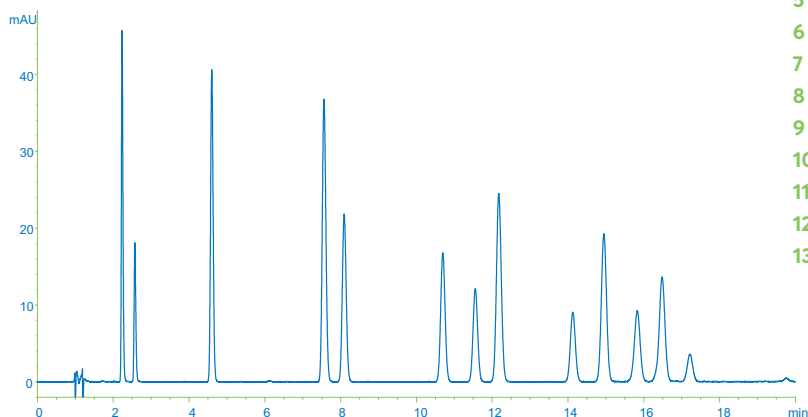
Column: Avantor® ACE® UltraCore C18-Amide

Dimensions: 100 x 3.0 mm

Mobile Phases: A: 0.1% Formic acid in H₂O
B: 0.1% Formic acid in ACN

Gradient:	Time (mins)	%B
	0	20
	20	40
	22	95
	24	95
	25	20
	35	20

Flow Rate: 0.43 mL/min
Injection: 5 µL
Temperature: 40 °C
Detection: UV, 274 nm
System Dwell Volume: 525 µL



- 1 Resorcinol
- 2 Catechol
- 3 Phenol
- 4 m-Cresol
- 5 o-Cresol
- 6 3,4-Xylenol
- 7 3,5-Xylenol
- 8 2,4-Xylenol
- 9 3,4,5-Trimethylphenol
- 10 2-Naphthol
- 11 2,4,6-Trimethylphenol
- 12 2,3,5-Trimethylphenol
- 13 1-Naphthol

ORDERING INFORMATION

Avantor® ACE® UltraCore C18-Amide 3.5µm particle size

HPLC hardware format with 600 bar / 9,000 psi pressure limit

Column dimensions	Catalogue number
2.1 x 50 mm	CORE-35E-521
3.0 x 50 mm	CORE-35E-530
4.6 x 50 mm	CORE-35E-546
2.1 x 100 mm	CORE-35E-1021
3.0 x 100 mm	CORE-35E-1030
4.6 x 100 mm	CORE-35E-1046
2.1 x 150 mm	CORE-35E-1521
3.0 x 150 mm	CORE-35E-1530

HPLC hardware format with 600 bar / 9,000 psi pressure limit

Column dimensions	Catalogue number
4.6 x 150 mm	CORE-35E-1546
Guards (for 2.1 mm id columns) 3pk*	CORE-35E-21GD
Guards (for 3.0 mm id columns) 3pk*	CORE-35E-30GD
Guards (for 4.6 mm id columns) 3pk*	CORE-35E-46GD

*Guards require holder BIO-GRD-0001

For any application support or additional questions please contact chromsupport@avantorsciences.com

About VWR, part of Avantor

As Avantor's channel brand, VWR serves as a leading global provider of product and service solutions to laboratory and production customers in the pharmaceutical, biotechnology, industrial, education, government and healthcare industries, and offers an integrated, seamless purchasing experience that is optimized for the way our customers do business. We set science in motion to create a better world. For more information, visit avantorsciences.com or vwr.com.

AUSTRIA

VWR International GmbH
Graumanngasse 7
1150 Vienna
Tel.: +43 1 97 002 0
info.at@vwr.com

BELGIUM

VWR International bv
Researchpark Haasrode 2020
Geldenaaksebaan 464
3001 Leuven
Tel.: +32 (0) 16 385 011
vwr.be@vwr.com

CANADA

VWR International
2360 Argentia Road
Mississauga, Ontario L5N 5Z7
Tel.: +1 800 932 5000
Canada_Orders@vwr.com

CHINA

VWR (Shanghai) Co., Ltd
Bld.No.1, No.3728 Jinke Rd,
Pudong New District
Shanghai, 201203- China
Tel.: 400 821 8006
info_china@vwr.com

CZECH REPUBLIC

VWR International s. r. o.
Veetee Business Park
Pražská 442
CZ - 281 67 Stříbrná Skalce
Tel.: +420 321 570 321
info.cz@vwr.com

DENMARK

VWR International A/S
Tobaksvejen 21
2860 Søborg
Tel.: +45 43 86 87 88
info.dk@vwr.com

FINLAND

VWR International Oy
Valimotie 9
00380 Helsinki
Tel.: +358 (0) 9 80 45 51
info.fi@vwr.com

FRANCE

VWR International S.A.S.
Le Périgores – Bâtiment B
201, rue Carnot
94126 Fontenay-sous-Bois cedex
Tel.: 0 825 02 30 30* (national)
Tel.: +33 (0) 1 45 14 85 00 (international)
info.fr@vwr.com
* 0,18 € TTC/min + prix appel

GERMANY

VWR International GmbH
Hilpertstraße 20a
D - 64295 Darmstadt
Tel.: 0800 702 00 07* (national)
Tel.: +49 (0) 6151 3972 0 (international)
info.de@vwr.com
*Freecall

HUNGARY

VWR International Kft.
Simon László u. 4.
4034 Debrecen
Tel.: +36 52 521130
info.hu@vwr.com

INDIA

Avantor Performance Materials India Limited
17th Floor, Building No. 5, Tower C
DLF Cyber City Phase – III
Gurgaon - 122002, Haryana
Tel.: +91-1244-65-6700
chromatography.india@avantorsciences.com

IRELAND

VWR International Ltd
Orion Business Campus
Northwest Business Park
Ballycoolin
Dublin 15
Tel.: +353 (0) 1 88 22 222
sales.ie@vwr.com

ITALY

VWR International S.r.l.
Via San Giusto 85
20153 Milano (MI)
Tel.: +39 02 3320311
info.it@vwr.com

KOREA

VWR International ~
17, Daehak 4-ro, Yeongtong-gu,
Suwon-si, Gyeonggi-do
Tel.: +82 31 645 7256
saleskorea@avantorsciences.com

THE NETHERLANDS

VWR International B.V.
Postbus 8198
1005 AD Amsterdam
Tel.: +31 (0) 20 4808 400
info.nl@vwr.com

MEXICO

VWR International, S.de R.L. de C.V.
Km. 14.5 Carretera
Tlalnepantla-Cuautitlán
Col. Lechería
Tultitlán Edo. de México
CP 54940
Tel.: +52 (55) 5005 0100
vwrmx@vwr.com

MIDDLE EAST & AFRICA

VWR International FZ-LLC
Office 203, DSP Lab Complex,
Dubai Science Park,
Dubai, United Arab Emirates
Tel.: +971 4 5573271
Info.mea@vwr.com

NORWAY

VWR International AS
Brynsalleen 4,
0667 Oslo
Tel.: +47 22 90 00 00
info.no@vwr.com

POLAND

VWR International Sp. z o.o.
Limbowa 5
80-175 Gdansk
Tel.: +48 58 32 38 200
info.pl@vwr.com

PORTUGAL

VWR International -
Material de Laboratório, Lda
Centro Empresarial de Alfragide
Rua da Indústria, nº 6
2610-088 Amadora
Tel.: +351 21 3600 770
info.pt@vwr.com

SINGAPORE

VWR Singapore Pte Ltd
18 Gul Drive
Singapore 629468
Tel.: +65 6505 0760
sales.sg@vwr.com

SPAIN

VWR International Eurolab S.L.U.
C/ Tecnología 5-17
A-7 Llinars Park
08450 - Llinars del Vallès
Barcelona
Tel.: +34 902 222 897
info.es@vwr.com

SWEDEN

VWR International AB
Fagerstagatan 18a
163 94 Stockholm
Tel.: +46 (0) 8 621 34 00
kundservice.se@vwr.com

SWITZERLAND

VWR International GmbH
Lerzenstrasse 16/18
8953 Dietikon
Tel.: +41 (0) 44 745 13 13
info.ch@vwr.com

UK

VWR International Ltd
Customer Service Centre
Hunter Boulevard - Magna Park
Lutterworth
Leicestershire
LE17 4XN
Tel.: +44 (0) 800 22 33 44
uksales@vwr.com

UNITED STATES

VWR International, LLC
100 Matsonford Road
Building One Suite 200
Radnor, PA 19087
Tel.: +1 800 932 5000
VWRCustomerService@vwr.com

GO TO VWR.COM FOR THE LATEST NEWS, SPECIAL OFFERS AND DETAILS FROM YOUR LOCAL VWR SUPPORT TEAM

Prices, product, and/or services details are current when published and subject to change without notice. | Certain products or services may be limited by country, federal, state, provincial, or local regulations. | VWR, part of Avantor, makes no claims or warranties concerning sustainable/green products. Any claims concerning sustainable/green products are the sole claims of the manufacturer and not those of VWR International, LLC and/or Avantor, Inc. or affiliates. Offers valid in countries listed above, void where prohibited by law or company policy, while supplies last. | Trademarks are owned by Avantor, Inc. or its affiliates, unless otherwise noted. | Visit vwr.com to view our privacy policy, trademark owners, and additional disclaimers.